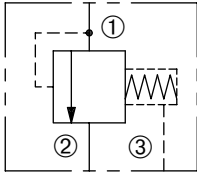


DDPS-100-3NCS

Differential Pressure
Sensing Valve

SERIES 10

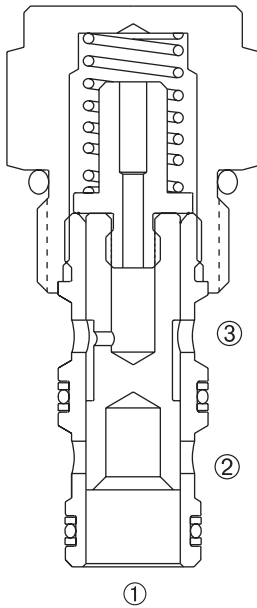


DESCRIPTION

A fixed spool cartridge valve designed to direct oil to a circuit when a predetermined pressure differential has been reached.

OPERATION

The DDPS-100-3NCS in the steady state blocks flow from ① to ②. When the predetermined pressure differential between ① and ③ is achieved, the spool shifts to allow flow from ① to ②.



FEATURES and BENEFITS

- Hardened precision spool and sleeve for long life.
- Pressure differential setting options.
- Industry common cavity.
- Compact size.

SPECIFICATIONS

Operating Pressure: 3000 PSI (207 Bar)

Flow: See PRESSURE DROP VS. FLOW graph.

Internal Leakage: 5 in.³/min. (82 cc/min.) max. at 3000 PSI (207 Bar)

Differential Pressure Setting: 40 PSI (2.8 Bar)

75 PSI (5.2 Bar)

100 PSI (6.9 Bar)

150 PSI (10.3 Bar)

Temperature: -30°F to +250°F (-35°C to +120°C)

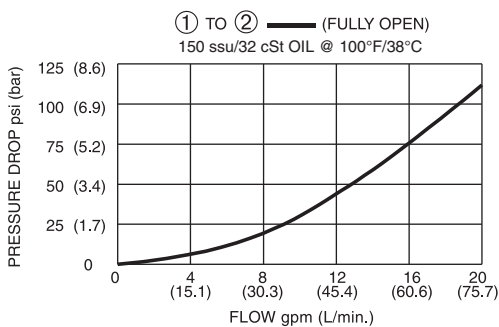
Recommended Filtration: ISO 20/18/14

Fluids: Mineral-based fluids. For other fluid compatibility, consult factory.

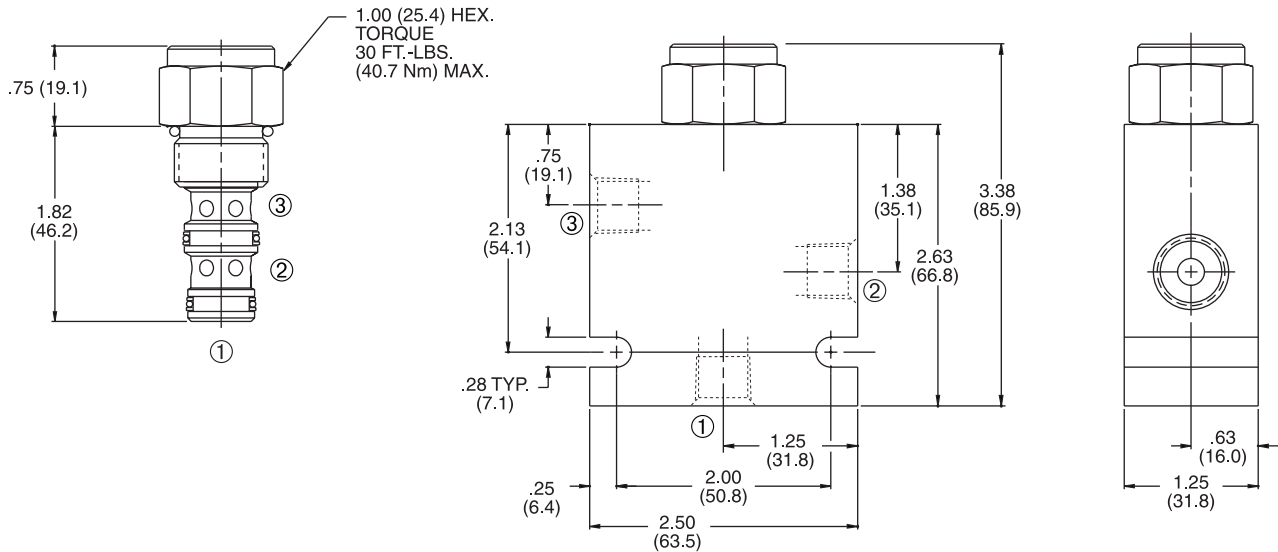
Cavity/Cavity Tool: 100-3 see page 11.10.3

In-Line Body Material: Anodized 6061T6 aluminum alloy rated at 3000 PSI (207 Bar).

PRESSURE DROP VS. FLOW



INSTALLATION DIMENSIONS



() Parentheses = Millimeters

HOW TO ORDER

DDPS - 100 - 3 NC S - * - * - ****

DIFFERENTIAL
PRESSURE
SENSING VALVE

CAVITY/SEAL

FLOW PATH

NORNALLY CLOSED

SPOOL

SEALS

N = Buna N
V = Viton

PORTING

2N = 1/4 PTF

3N = 3/8 PTF

6T = SAE 6

8T = SAE 8

Omit for Cartridge Only.

(Other porting options available – consult factory.)

DIFFERENTIAL
PRESSURE SETTING

40 = 40 PSI (2.8 Bar)

75 = 75 PSI (5.2 Bar)

100 = 100 PSI (8.9 Bar)

150 = 150 PSI (10.3 Bar)

SOLENOID
CHECK
MOTION CONTROL
FLOW CONTROL
RELIEF
PRESSURE CONTROL
SEQUENCE
SHUTTLE
DIRECTIONAL VALVES
ACCESSORIES
TECHNICAL DATA