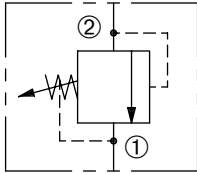


# DDRV-100

Adjustable, Direct-Acting,  
Differential Area Relief Valve

## SERIES 10

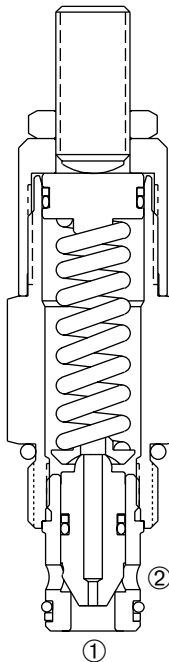


### DESCRIPTION

An adjustable, direct-acting poppet cartridge valve designed to limit pressure in hydraulic circuits.

### OPERATION

The DDRV-100 prevents flow from ② to ① until the set crack pressure at ② is achieved. The poppet then unseats allowing flow from ② to ① protecting the circuit from over pressurization.



### FEATURES and BENEFITS

- Rapid response to pressure surges.
- Low pressure rise.
- Hardened poppet and seat for long life.
- Hidden adjustment (tamper resistant).
- Aluminum knob and disc nut option.
- Adjustment may be locked in place.
- Industry common cavity.
- Compact size.

### SPECIFICATIONS

**Operating Pressure:** 3600 PSI (248 Bar)

**Flow:** See PRESSURE DROP VS. FLOW graph.  
Nominal Flow 20 GPM (75.7 L/min).

**Internal Leakage:** 20 drops/min. max. at reseal.

**Crack Pressure Defined:** Determined at .25 gpm (0.9L/min.)

**Reseat Pressure:** Nominal 80% of crack pressure

**Spring Range:** 100 to 600 PSI ( 7 to 41 Bar)

Preset: 300 PSI ( 21 Bar)

250 to 2000 PSI ( 17 to 138 Bar)

Preset: 1000 PSI ( 69 Bar)

600 to 3600 PSI ( 41 to 248 Bar)

Preset: 2000 PSI (138 Bar)

**Temperature:** -30°F to +250°F (-35°C to +120°C)

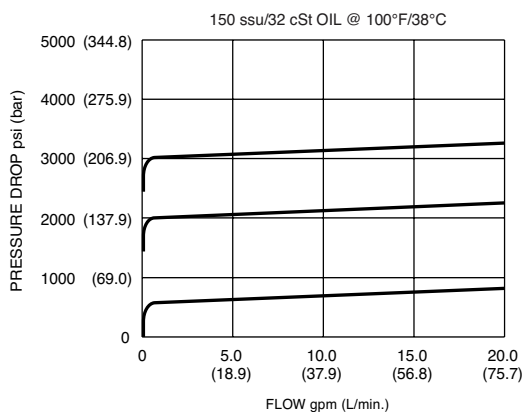
**Recommended Filtration:** ISO 20/18/14

**Fluids:** Mineral-based fluids. For other fluid compatibility, consult factory.

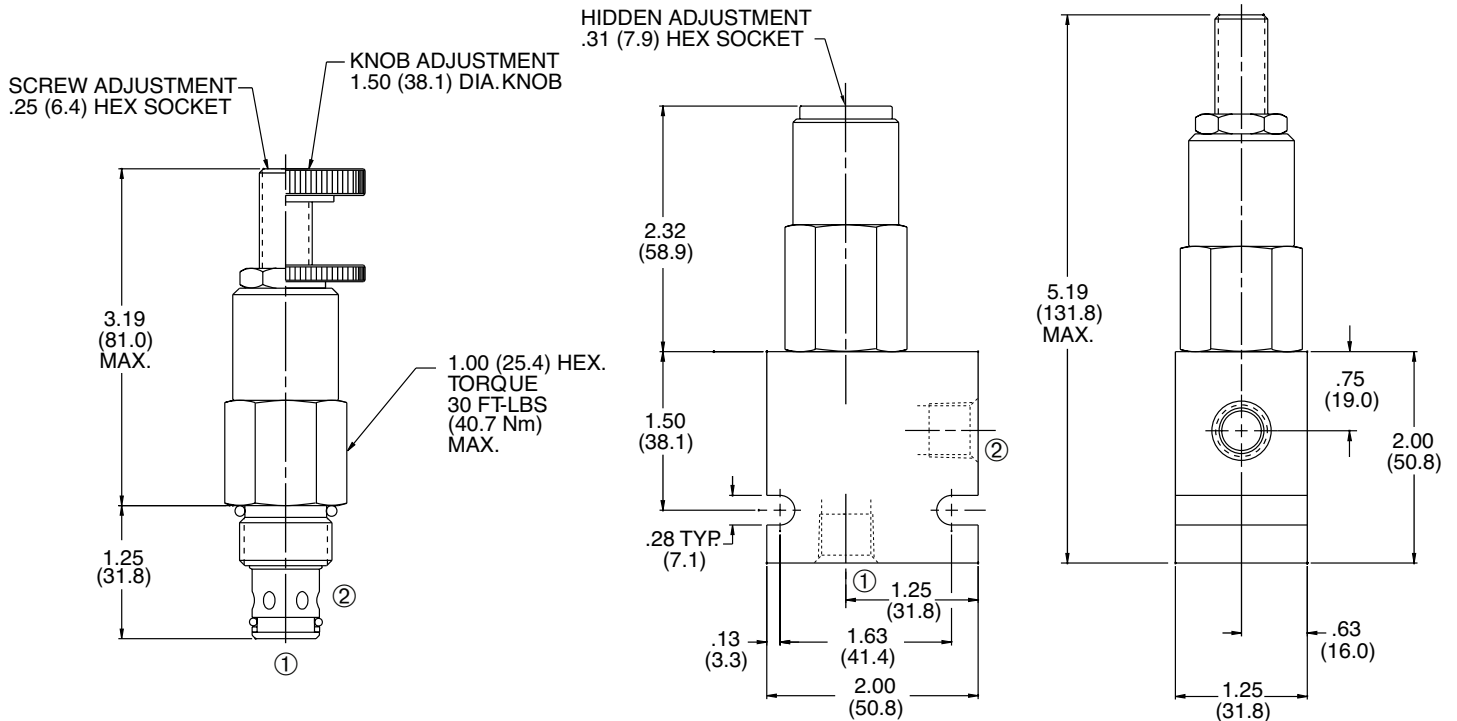
**Cavity/Cavity Tool:** 100-2, see page 11.10.2

**In-Line Body Material:** Anodized 6061T6 aluminum alloy rated at 3000 PSI (207 Bar).

### PRESSURE DROP VS. FLOW

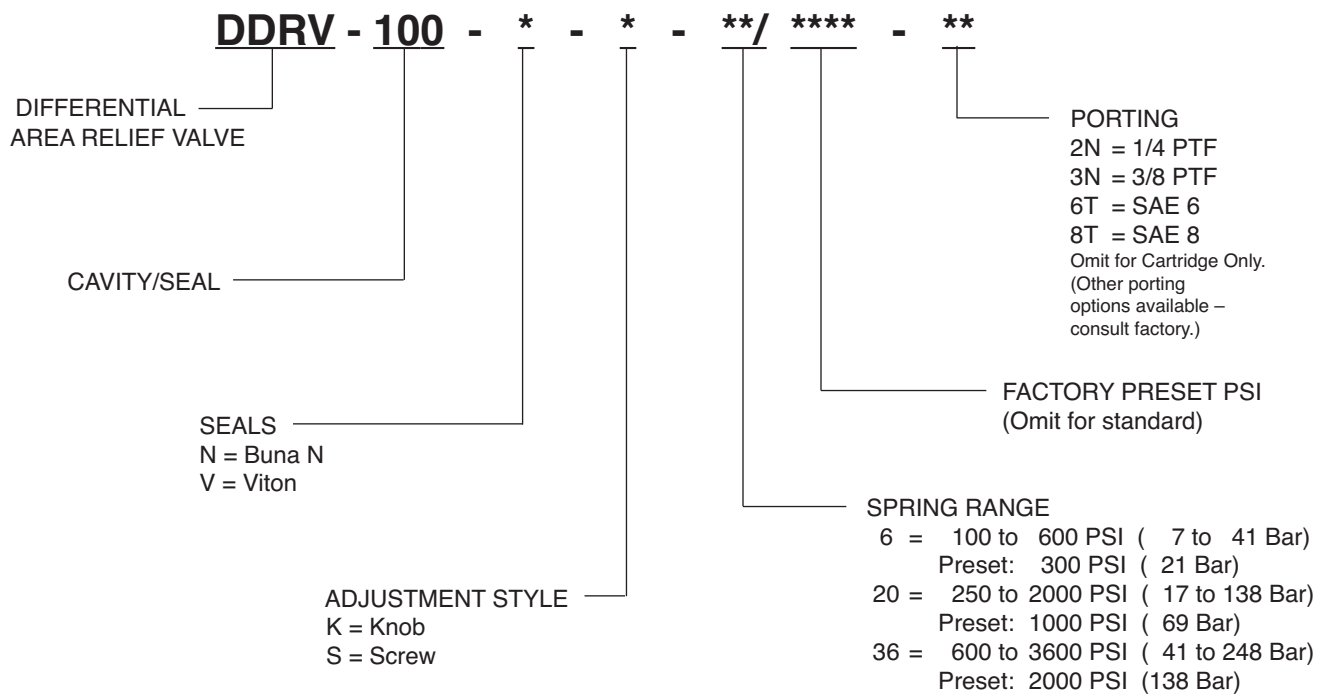


**INSTALLATION DIMENSIONS**



( ) Parentheses = Millimeters

**HOW TO ORDER**



SOLENOID  
CHECK  
MOTION CONTROL  
FLOW CONTROL  
RELIEF  
PRESSURE CONTROL  
SEQUENCE  
SHUTTLE  
DIRECTIONAL VALVES  
ACCESSORIES  
TECHNICAL DATA