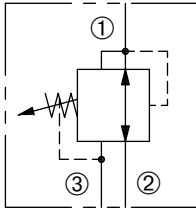


# DPR-100

Adjustable, Direct-Acting,  
Pressure Reducing/Relieving Valve

## SERIES 10

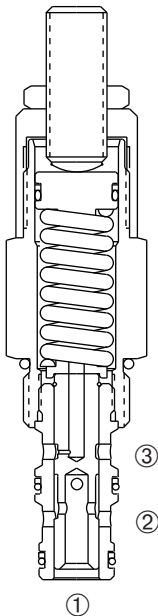


### DESCRIPTION

An adjustable, direct-acting spool cartridge valve designed to regulate pressure in secondary circuits.

### OPERATION

The DPR-100 in the steady state will allow bi-directional flow between ① and ② with spring chamber ③ vented. When the preset pressure at ① is achieved, the spool throttles to regulate pressure at ① by restricting flow at ②.



### FEATURES and BENEFITS

- Variety of pressure ranges.
- Hardened precision spool and sleeve for long life.
- Hidden adjustment (tamper resistant) option.
- Aluminum knob and disc nut option.
- Adjustment may be locked in place.
- Industry common cavity.
- Compact size.

### SPECIFICATIONS

**Operating Pressure:** 3000 PSI (207 Bar)

**Flow:** See PRESSURE DROP VS. FLOW graph.

**Internal Leakage:** 5 in.<sup>3</sup>/min. (82 cc/min.) max. at 3000 PSI (207 Bar)

**Spring Range :** 50 PSI to 200 PSI ( 3 to 14 Bar)

Preset: 150 PSI ( 10 Bar)

100 PSI to 900 PSI ( 7 to 62 Bar)

Preset: 450 PSI ( 31 Bar)

700 PSI to 2400 PSI ( 48 to 166 Bar)

Preset: 1800 PSI (124 Bar)

**Temperature:** -30°F to +250°F (-35°C to +120°C)

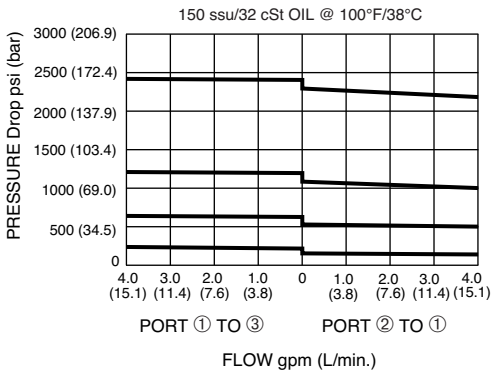
**Recommended Filtration:** ISO 20/18/14

**Fluids:** Mineral-based fluids. For other fluid compatibility, consult factory.

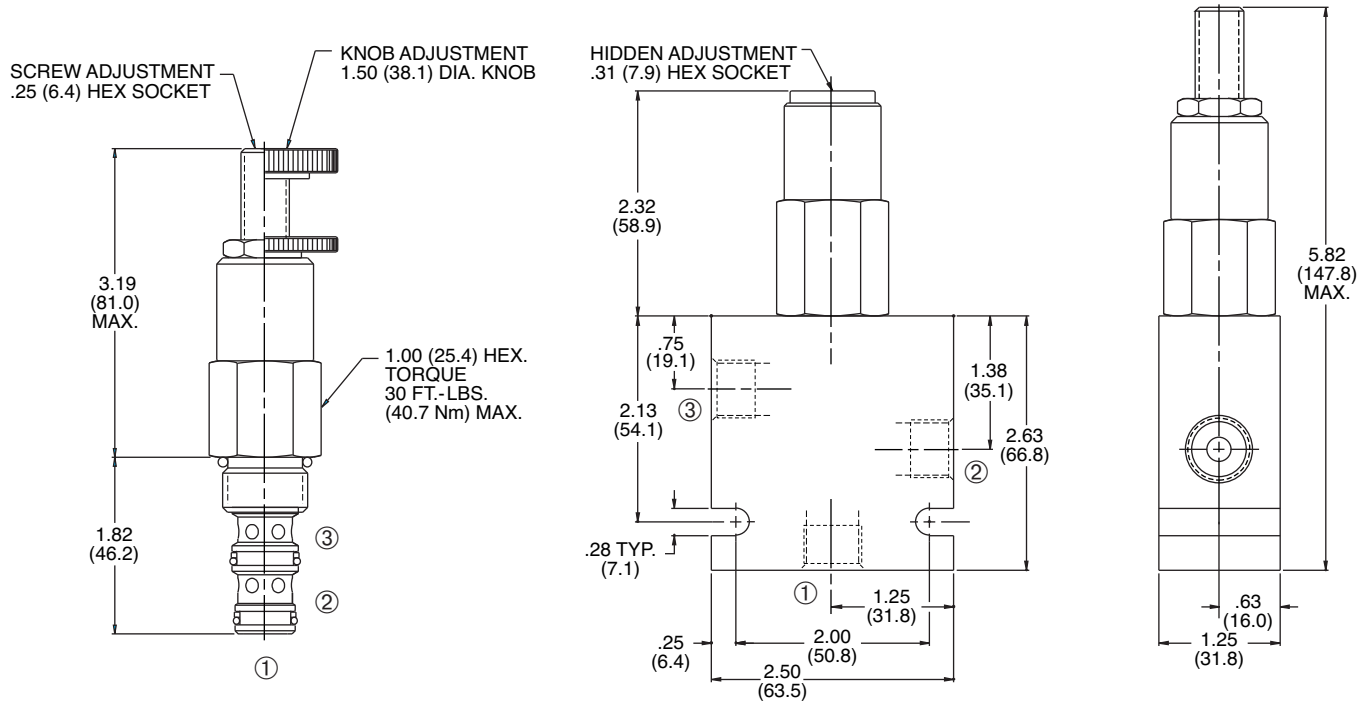
**Cavity/Cavity Tool:** 100-3 see page 11.10.3

**In-Line Body Material:** Anodized 6061T6 aluminum alloy rated at 3000 PSI (207 Bar).

### PRESSURE DROP VS. FLOW



## INSTALLATION DIMENSIONS



( ) Parentheses = Millimeters

## HOW TO ORDER

**DPR - 100 - \* - \* - \*\* / \*\*\*\* - \*\***

PRESSURE REDUCING VALVE

CAVITY/SEAL

SEALS

N = Buna N  
V = Viton

ADJUSTMENT STYLE

H = Hidden  
K = Knob  
S = Screw

PORTING

2N = 1/4 PTF  
3N = 3/8 PTF  
6T = SAE 6  
8T = SAE 8

Omit for Cartridge Only.  
(Other porting options available – consult factory.)

FACTORY PRESET PSI  
(Omit for standard)

SPRING RANGE

2 = 50 to 200 PSI ( 3 to 14 Bar)  
Preset: 150 PSI ( 10 Bar)  
9 = 100 to 900 PSI ( 7 to 62 Bar)  
Preset: 450 PSI ( 31 Bar)  
24 = 700 to 2400 PSI ( 48 to 166 Bar)  
Preset: 1800 PSI (124 Bar)

SOLENOID  
CHECK  
MOTION CONTROL  
FLOW CONTROL  
RELIEF  
PRESSURE CONTROL  
SEQUENCE  
SHUTTLE  
DIRECTIONAL VALVES  
ACCESSORIES  
TECHNICAL DATA