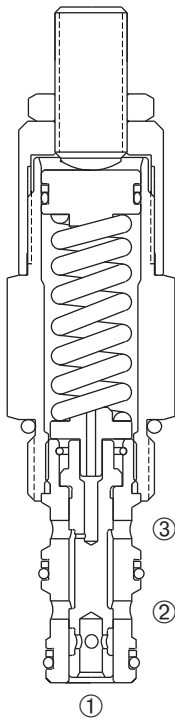
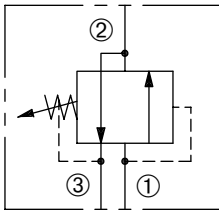


DPS2-100

Adjustable, Internally-Piloted,
Internally-Drained Sequence Valve

SERIES 10



DESCRIPTION

An adjustable, internally-piloted spool cartridge valve designed to direct oil to a circuit when a predetermined pressure has been reached.

OPERATION

The DPS2-100 in the steady state allows flow from ② to ③ with ① blocked. When the preset pressure at ① is achieved, the spool shifts to allow flow from ① to ②.

FEATURES and BENEFITS

- Variety of pressure ranges.
- Hardened precision spool and sleeve for long life.
- Hidden adjustment (tamper resistant) option.
- Aluminum knob and disc nut option.
- Adjustment may be locked in place.
- Industry common cavity.
- Compact size.

SPECIFICATIONS

Operating Pressure: 3000 PSI (207 Bar)

Flow: See PRESSURE DROP VS. FLOW graph.

Internal Leakage: 5 in.³/min. (82 cc/min.) max. at 3000 PSI (207 Bar)

Spring Range: 400 to 2400 PSI (28 to 166 Bar)

Preset: 2000 PSI (138 Bar)

Temperature: -30°F to +250°F (-35°C to +120°C)

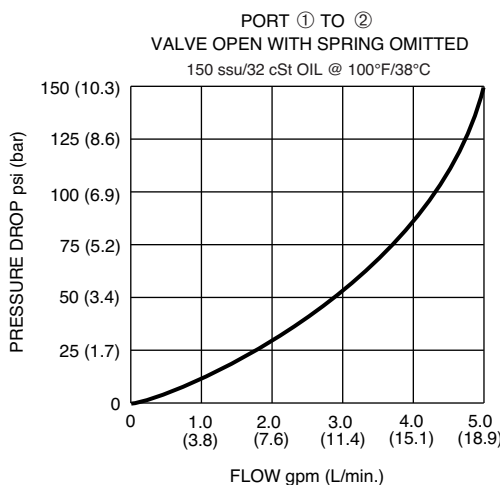
Recommended Filtration: ISO 20/18/14

Fluids: Mineral-based fluids. For other fluid compatibility, consult factory.

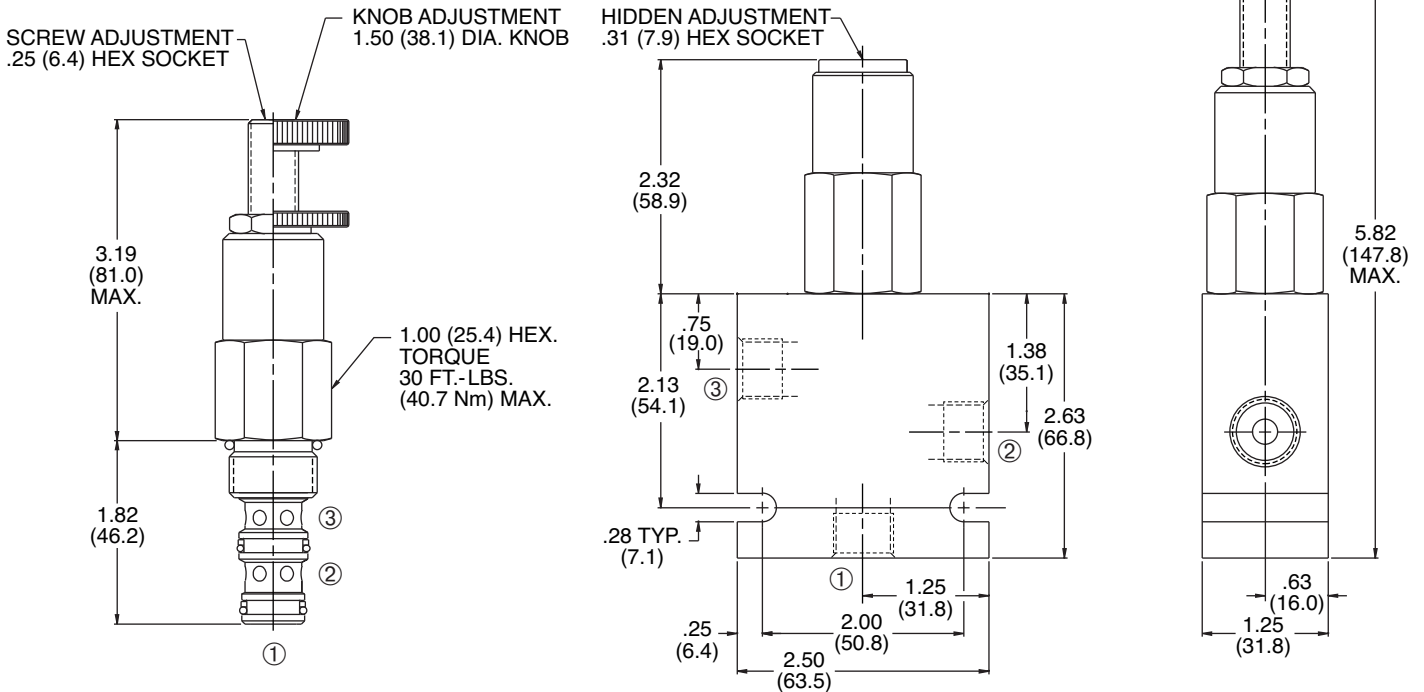
Cavity/Cavity Tool: 100-3, see page 11.10.3

In-Line Body Material: Anodized 6061T6 aluminum alloy rated at 3000 PSI (207 Bar).

PRESSURE DROP VS. FLOW

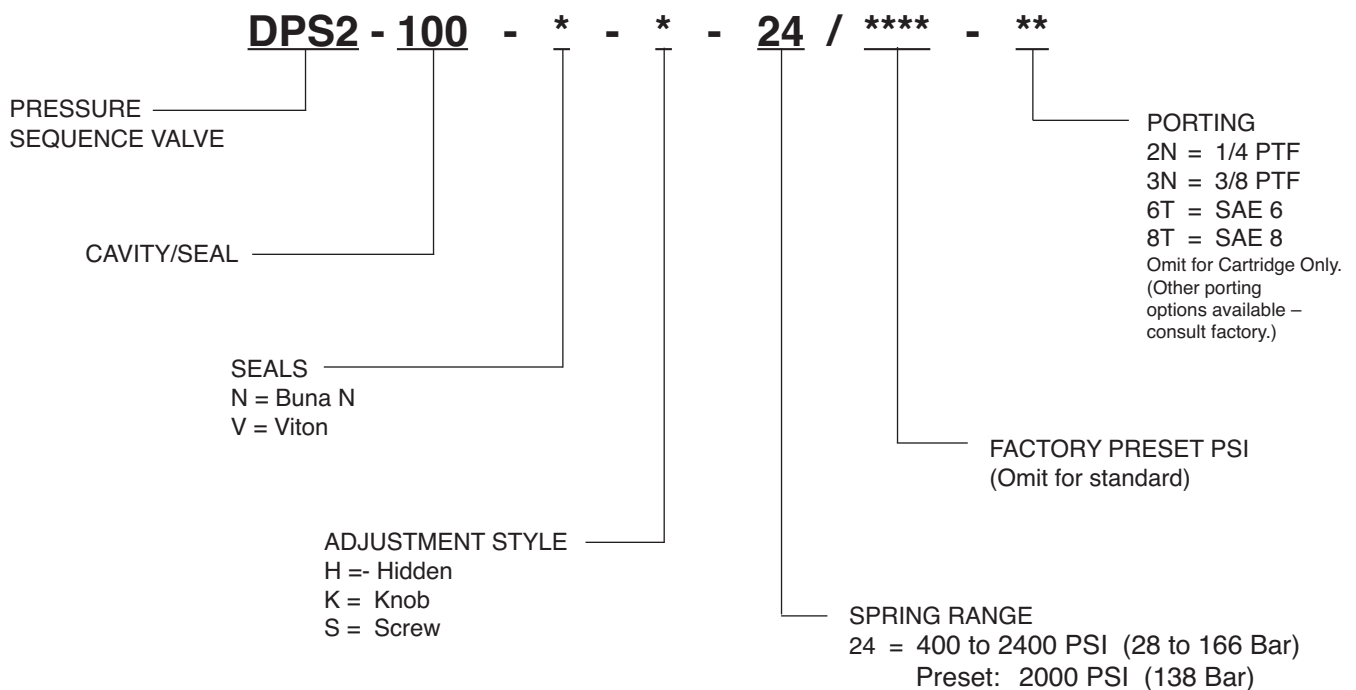


INSTALLATION DIMENSIONS



() Parentheses = Millimeters

HOW TO ORDER



SOLENOID
CHECK
MOTION CONTROL
FLOW CONTROL
RELIEF
PRESSURE CONTROL
SEQUENCE
SHUTTLE
DIRECTIONAL VALVES
ACCESSORIES
TECHNICAL DATA