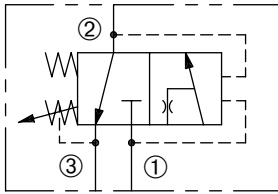


DPSK-080

Adjustable, Pilot-Operated,
Kick-Down Sequence Valve

SERIES 8



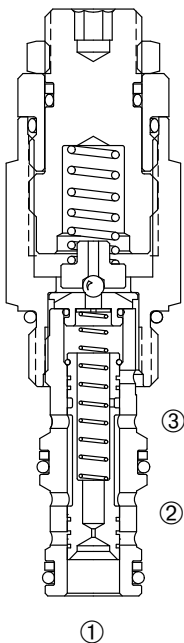
DESCRIPTION

An adjustable, pilot-operated spool cartridge valve designed to direct oil to a circuit when a predetermined pressure has been reached.

OPERATION

The DPSK-080 in steady state blocks flow at ① while allowing flow from ② to ③. When the preset pressure at ① is achieved, the pilot section opens. This pilot flow creates a pressure differential across the spool, which causes the spool to shift to allow flow from ① to ②.

The spool will not shift back (kick-down) until pressure at ② falls below a predetermined pressure.



FEATURES and BENEFITS

- Hardened precision spool and sleeve for long life.
- Variety of pressure ranges.
- High accuracy of pilot operated design.
- Adjustment prevents spring from going solid.
- Adjustment may be locked in place.
- Tamper resistant option.
- Industry common cavity.
- Compact size.

SPECIFICATIONS

Operating Pressure: 4000 PSI (276 Bar)

Flow: See PRESSURE DROP VS. FLOW graph

Nominal flow 5 GPM (19.0 l/min)

Internal Leakage: 5 in³/min (82 cc/min) max. at 3000 PSI (207 Bar)

Spring Range: 300 to 4000 PSI (20 to 276 Bar)

Preset: (See HOW TO ORDER)

Reset Spring Pressure: 100 PSI (7 Bar)

Temperature: -30°F to +250°F (-35°C to +120°C)

Recommended Filtration: ISO 19/15

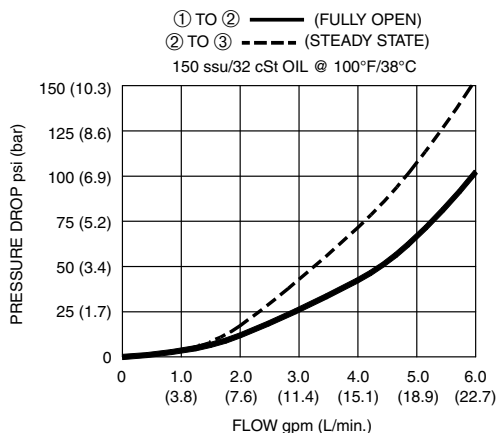
Fluids: Mineral-based fluids.

For other fluid compatibility, consult factory.

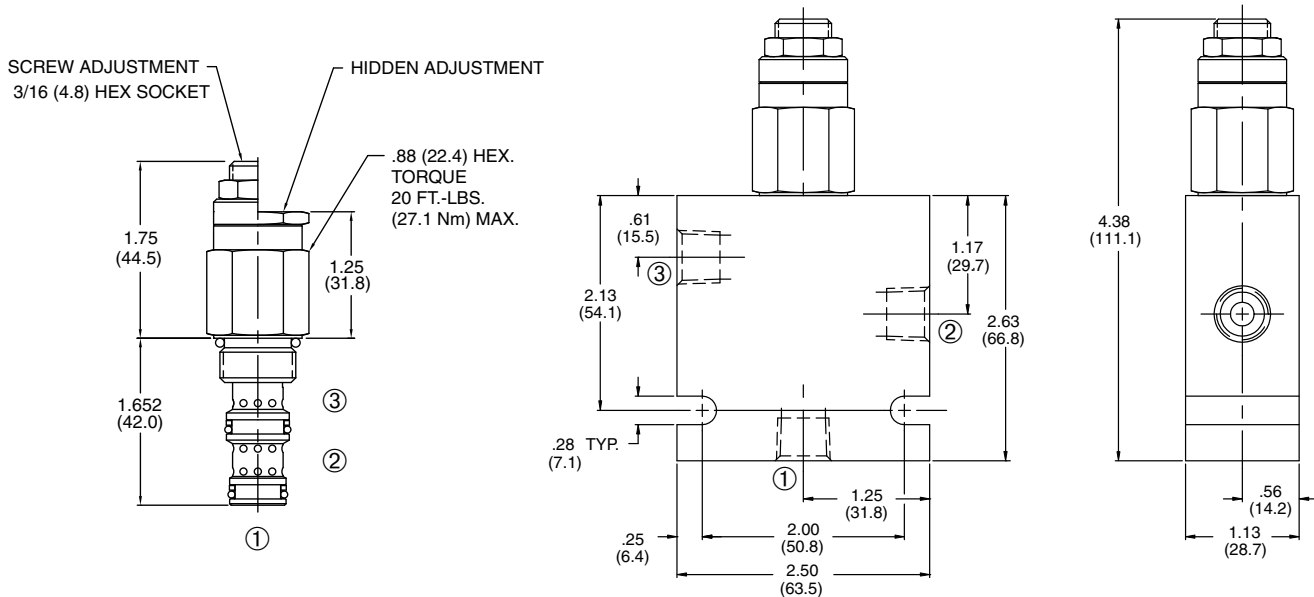
Cavity/Cavity Tool: 080-3, see page 11.08.3

In-Line Body Material: Anodized 6061T6 aluminum alloy rated at 3000 psi (207 Bar).

PRESSURE DROP VS. FLOW

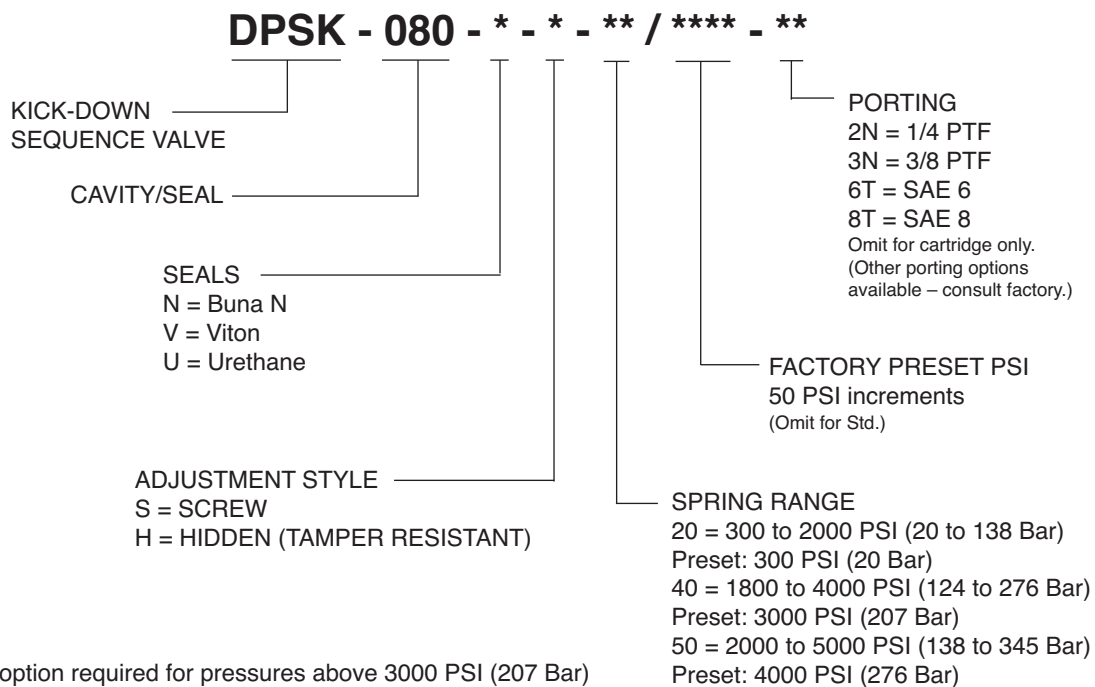


INSTALLATION DIMENSIONS



() Parentheses = Millimeters

HOW TO ORDER



“U” Urethane option required for pressures above 3000 PSI (207 Bar)

