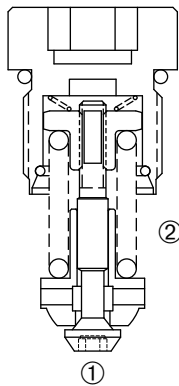
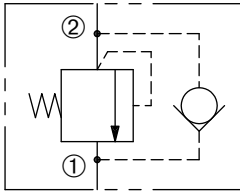


RV-050

Relief Valve,
Anti-Cavitation Check

SERIES 050



DESCRIPTION

A cartridge valve designed to combine a shock relief valve, (direct acting) and anti-cavitation function through the check valve.

OPERATION

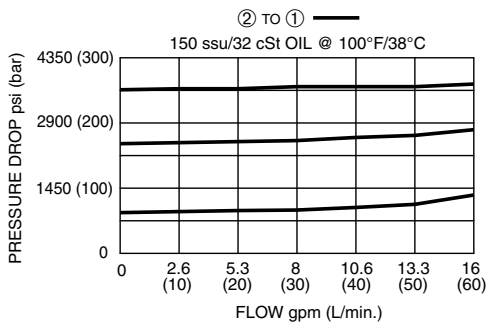
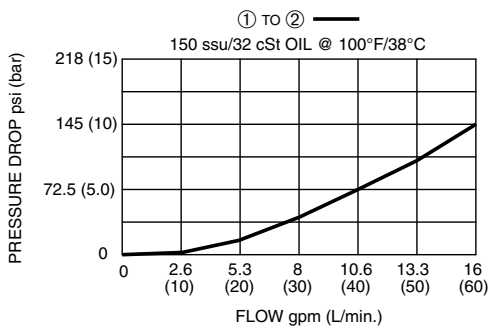
The RV-050 prevents flow from ② to ① until the set crack pressure at ② is achieved. The poppet then unseats, allowing flow from ② to ①, protecting the circuit from over pressurization.

The RV-050 allows free flow from ① to ②. As pressure at ① exceeds pressure at ②, the valve unseats from the cavity, allowing flow from ① to ②. This provides anti-cavitation function through the check valve.

FEATURES and BENEFITS

- Rapid response to pressure surges.
- Anticavitation function through the check valve.
- Hardened precision poppet and seat for long life.
- Fast opening and closing.
- Low hysteresis.
- Compact size.

PRESSURE DROP VS. FLOW



SPECIFICATIONS

Operating Pressure: 5500 PSI (380 Bar)

Max. Flow: 16 gpm (60 l/min)

Internal Leakage: 1.0 cc/min at 80% set

Crack Pressure Defined: Determined at .25 gpm (0.9 L/min)

Reseat Pressure: Nominal 80% of crack pressure

Temperature: -30°F to +220°F (-35°C to +104°C)

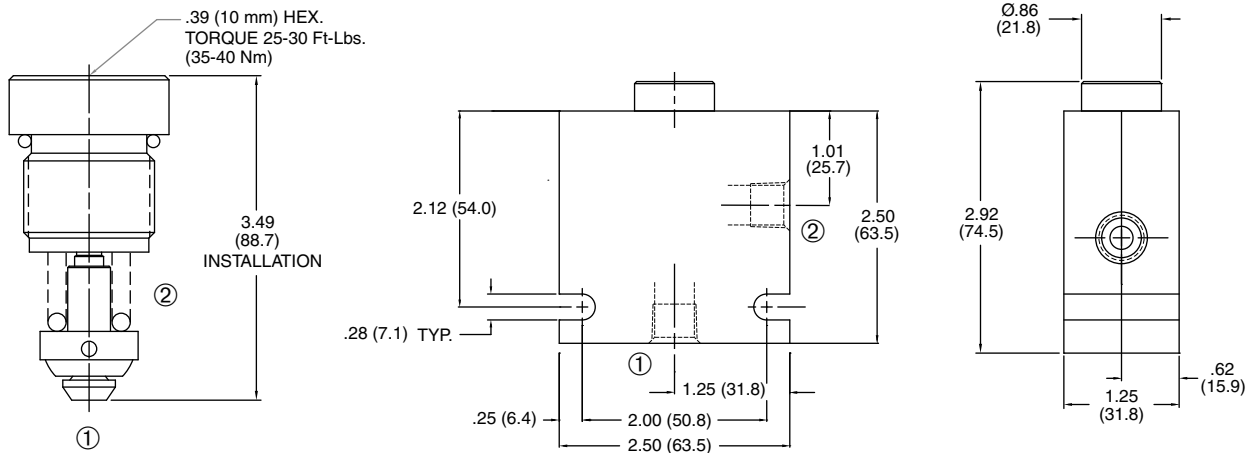
Recommended Filtration: ISO 20/18/14

Fluids: Mineral-based fluids.

Cavity/Cavity Tool: R05-2, see page 11.25.2

In-Line Body Material: Anodized 6061T6 aluminum alloy rated at 3000 PSI (207 Bar).

INSTALLATION DIMENSIONS



() Parentheses = Millimeters

HOW TO ORDER

