

Miniature Series

Flow Controls & Needle Valves

LFC, LFM & LNB Series

MINIATURE

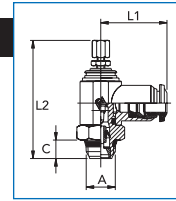
LFC, LFM, AND LNB SERIES

Tube Interface Knob Adjustment

Inch • Metric Tube Valve With Knob Adjustment



Blue Collar Identifies Inch Tube Size
Black Collar Identifies Metric Tube Size

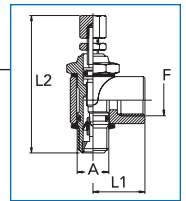


Model Code	Func	A	Tube OD	C	L1	L2 min	L2 max	Model Code	unc	A	Tube OD	C	L1	L2 min	L2 max
LFCU32TAK	C	10-32UNC	1/8"	0.22	0.75	1.30	1.47	LFVS20TKK	V	1/4" SWIFT	6mm	0.27	0.98	1.85	2.08
LFVU32TAK	V	10-32UNC	1/8"	0.22	0.75	1.30	1.47	LNBS20TKK	B	1/4" SWIFT	6mm	0.27	0.98	1.85	2.08
LNBU32TAK	B	10-32UNC	1/8"	0.22	0.75	1.30	1.47	LFCS20TLK	C	1/4" SWIFT	8mm	0.27	1.02	1.85	2.08
LFCU32TBK	C	10-32UNC	5/32"	0.22	0.75	1.30	1.47	LFVS20TLK	V	1/4" SWIFT	8mm	0.27	1.02	1.85	2.08
LFVU32TBK	V	10-32UNC	5/32"	0.22	0.75	1.30	1.47	LNBS20TLK	B	1/4" SWIFT	8mm	0.27	1.02	1.85	2.08
LNBU32TBK	B	10-32UNC	5/32"	0.22	0.75	1.30	1.47	LFCS25TEK	C	3/8" SWIFT	3/8"	0.29	1.18	2.21	2.48
LFCM05TGK	C	M5	3mm	0.16	0.75	1.30	1.47	LFVS25TEK	V	3/8" SWIFT	3/8"	0.29	1.18	2.21	2.48
LFVM05TGK	V	M5	3mm	0.16	0.75	1.30	1.47	LNBS25TEK	B	3/8" SWIFT	3/8"	0.29	1.18	2.21	2.48
LNBM05TGK	B	M5	3mm	0.16	0.75	1.30	1.47	LFCS25TFK	C	3/8" SWIFT	1/2"	0.29	1.28	2.21	2.48
LFCM05THK	C	M5	4mm	0.16	0.75	1.30	1.47	LFVS25TFK	V	3/8" SWIFT	1/2"	0.29	1.28	2.21	2.48
LFVM05THK	V	M5	4mm	0.16	0.75	1.30	1.47	LNBS25TFK	B	3/8" SWIFT	1/2"	0.29	1.28	2.21	2.48
LNBM05THK	B	M5	4mm	0.16	0.75	1.30	1.47	LFCS25TMK	C	3/8" SWIFT	10mm	0.29	1.18	2.21	2.48
LFCM05TJK	C	M5	5mm	0.16	0.79	1.30	1.47	LFVS25TMK	V	3/8" SWIFT	10mm	0.29	1.18	2.21	2.48
LFVM05TJK	V	M5	5mm	0.16	0.79	1.30	1.47	LNBS25TMK	B	3/8" SWIFT	10mm	0.29	1.18	2.21	2.48
LNBM05TJK	B	M5	5mm	0.16	0.79	1.30	1.47	LFCS25TNK	C	3/8" SWIFT	12mm	0.29	1.28	2.21	2.48
LFCM05TKK	C	M5	6mm	0.16	0.81	1.30	1.47	LFVS25TNK	V	3/8" SWIFT	12mm	0.29	1.28	2.21	2.48
LFVM05TKK	V	M5	6mm	0.16	0.81	1.30	1.47	LNBS25TNK	B	3/8" SWIFT	12mm	0.29	1.28	2.21	2.48
LNBM05TKK	B	M5	6mm	0.16	0.81	1.30	1.47	LFCS30TFK	C	1/2" SWIFT	1/2"	0.35	1.38	2.40	2.71
LFCS10TAK	C	1/8" SWIFT	1/8"	0.22	0.83	1.61	1.83	LFVS30TFK	V	1/2" SWIFT	1/2"	0.35	1.38	2.40	2.71
LFVS10TAK	V	1/8" SWIFT	1/8"	0.22	0.83	1.61	1.83	LNBS30TFK	B	1/2" SWIFT	1/2"	0.35	1.38	2.40	2.71
LNBS10TAK	B	1/8" SWIFT	1/8"	0.22	0.83	1.61	1.83	LFCS30TNK	C	1/2" SWIFT	12mm	0.35	1.38	2.40	2.71
LFCS10TBK	C	1/8" SWIFT	5/32"	0.22	0.83	1.61	1.83	LFVS30TNK	V	1/2" SWIFT	12mm	0.35	1.38	2.40	2.71
LFVS10TBK	V	1/8" SWIFT	5/32"	0.22	0.83	1.61	1.83	LNBS30TNK	B	1/2" SWIFT	12mm	0.35	1.38	2.40	2.71
LNBS10TBK	B	1/8" SWIFT	5/32"	0.22	0.83	1.61	1.83	LFCS30TPK	C	1/2" SWIFT	14mm	0.35	1.39	2.40	2.71
LFCS10TCK	C	1/8" SWIFT	1/4"	0.22	0.86	1.61	1.83	LFVS30TPK	V	1/2" SWIFT	14mm	0.35	1.39	2.40	2.71
LFVS10TCK	V	1/8" SWIFT	1/4"	0.22	0.86	1.61	1.83	LNBS30TPK	B	1/2" SWIFT	14mm	0.35	1.39	2.40	2.71
LNBS10TCK	B	1/8" SWIFT	1/4"	0.22	0.86	1.61	1.83								
LFCS10THK	C	1/8" SWIFT	4mm	0.22	0.83	1.61	1.83								
LFVS10THK	V	1/8" SWIFT	4mm	0.22	0.83	1.61	1.83								
LNBS10THK	B	1/8" SWIFT	4mm	0.22	0.83	1.61	1.83								
LFCS10TJK	C	1/8" SWIFT	5mm	0.22	0.85	1.61	1.83								
LFVS10TJK	V	1/8" SWIFT	5mm	0.22	0.85	1.61	1.83								
LNBS10TJK	B	1/8" SWIFT	5mm	0.22	0.85	1.61	1.83								
LFCS10TKK	C	1/8" SWIFT	6mm	0.22	0.89	1.61	1.83								
LFVS10TKK	V	1/8" SWIFT	6mm	0.22	0.89	1.61	1.83								
LNBS10TKK	B	1/8" SWIFT	6mm	0.22	0.89	1.61	1.83								
LFCS10TLK	C	1/8" SWIFT	8mm	0.22	0.94	1.61	1.83								
LFVS10TLK	V	1/8" SWIFT	8mm	0.22	0.94	1.61	1.83								
LNBS10TLK	B	1/8" SWIFT	8mm	0.22	0.94	1.61	1.83								
LFCS20TCK	C	1/4" SWIFT	1/4"	0.27	0.98	1.85	2.08								
LFVS20TCK	V	1/4" SWIFT	1/4"	0.27	0.98	1.85	2.08								
LNBS20TCK	B	1/4" SWIFT	1/4"	0.27	0.98	1.85	2.08								
LFCS20TEK	C	1/4" SWIFT	3/8"	0.29	1.18	2.21	2.48								
LFVS20TEK	V	1/4" SWIFT	3/8"	0.29	1.18	2.21	2.48								
LNBS20TEK	B	1/4" SWIFT	3/8"	0.29	1.18	2.21	2.48								
LFCS20TJK	C	1/4" SWIFT	5mm	0.27	0.98	1.85	2.08								
LFVS20TJK	V	1/4" SWIFT	5mm	0.27	0.98	1.85	2.08								
LNBS20TJK	B	1/4" SWIFT	5mm	0.27	0.98	1.85	2.08								
LFCS20TKK	C	1/4" SWIFT	6mm	0.27	0.98	1.85	2.08								

Code C - Controlled Flow Out
Code V - Controlled Flow In
Code B - Controlled Flow Both Directions

LFC, LFM, LNB SERIES

Female NPTF Interface Knob Adjustment



Model Code	Func	A	Rt Angle Thread F	L1	L2 min	L2 max
LFCU32NDK	C	10-32UNC	10-32UNC	0.39	1.30	1.47
LFVU32NDK	V	10-32UNC	10-32UNC	0.39	1.30	1.47
LNBU32NDK	B	10-32UNC	10-32UNC	0.39	1.30	1.47
LFCS10NAK	C	1/8" SWIFT	1/8" NPTF	0.65	1.61	1.83
LFVS10NAK	V	1/8" SWIFT	1/8" NPTF	0.65	1.61	1.83
LNBS10NAK	B	1/8" SWIFT	1/8" NPTF	0.65	1.61	1.83
LFCS20NBK	C	1/4" SWIFT	1/4" NPTF	0.86	1.85	2.09
LFVS20NBK	V	1/4" SWIFT	1/4" NPTF	0.86	1.85	2.09
LNBS20NBK	B	1/4" SWIFT	1/4" NPTF	0.86	1.85	2.09
LFCS25NCK	C	3/8" SWIFT	3/8" NPTF	1.04	2.21	2.48
LFVS25NCK	V	3/8" SWIFT	3/8" NPTF	1.04	2.21	2.48
LNBS25NCK	B	3/8" SWIFT	3/8" NPTF	1.04	2.21	2.48

Dimensions shown are in inches and are for reference only.

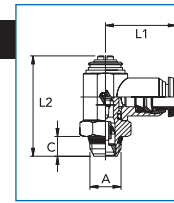
Miniature Series

LFC, LFV, AND LNB SERIES
Tube Interface Screw Adjustment

Inch • Metric Tube Valve With Knob Adjustment



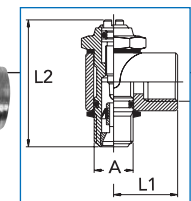
Blue Collar Identifies Inch Tube Size
Black Collar Identifies Metric Tube Size



Model Code	Func	A	Tube OD	C	L1	L2	Model Code	Func	A	Tube OD	C	L1	L2
LFCU32TAS	C	10-32UNC	1/8"	0.16	0.75	0.95	LFVS20TKS	V	1/4" SWIFT	6mm	0.28	0.98	1.40
LFVU32TAS	V	10-32UNC	1/8"	0.16	0.75	0.95	LNBS20TKS	B	1/4" SWIFT	6mm	0.28	0.98	1.40
LNBU32TAS	B	10-32UNC	1/8"	0.16	0.75	0.95	LFCS20TLS	C	1/4" SWIFT	8mm	0.28	1.02	1.40
LFCU32TBS	C	10-32UNC	5/32"	0.16	0.75	0.95	LFVS20TLS	V	1/4" SWIFT	8mm	0.28	1.02	1.40
LFVU32TBS	V	10-32UNC	5/32"	0.16	0.75	0.95	LNBS20TLS	B	1/4" SWIFT	8mm	0.28	1.02	1.40
LNBU32TBS	B	10-32UNC	5/32"	0.16	0.75	0.95	LFCS25TES	C	3/8" SWIFT	3/8"	0.29	1.18	1.61
LFCM05TGS	C	M5	3mm	0.16	0.75	0.95	LFVS25TES	V	3/8" SWIFT	3/8"	0.29	1.18	1.61
LFVM05TGS	V	M5	3mm	0.16	0.75	0.95	LNBS25TES	B	3/8" SWIFT	3/8"	0.29	1.18	1.61
LNBM05TGS	B	M5	3mm	0.16	0.75	0.95	LFCS25TFS	C	3/8" SWIFT	1/2"	0.29	1.28	1.61
LFCM05THS	C	M5	4mm	0.16	0.75	0.95	LFVS25TFS	V	3/8" SWIFT	1/2"	0.29	1.28	1.61
LFVM05THS	V	M5	4mm	0.16	0.75	0.95	LNBS25TFS	B	3/8" SWIFT	1/2"	0.29	1.28	1.61
LNBM05THS	B	M5	4mm	0.16	0.75	0.95	LFCS25TMS	C	3/8" SWIFT	10mm	0.29	1.20	1.61
LFCM05TJS	C	M5	5mm	0.16	0.79	0.95	LFVS25TMS	V	3/8" SWIFT	10mm	0.29	1.20	1.61
LFVM05TJS	V	M5	5mm	0.16	0.79	0.95	LNBS25TMS	B	3/8" SWIFT	10mm	0.29	1.20	1.61
LNBM05TJS	B	M5	5mm	0.16	0.79	0.95	LFCS25TNS	C	3/8" SWIFT	12mm	0.29	1.28	1.61
LFCM05TKS	C	M5	6mm	0.16	0.81	0.95	LFVS25TNS	V	3/8" SWIFT	12mm	0.29	1.28	1.61
LFVM05TKS	V	M5	6mm	0.16	0.81	0.95	LNBS25TNS	B	3/8" SWIFT	12mm	0.29	1.28	1.61
LNBM05TKS	B	M5	6mm	0.16	0.81	0.95	LFCS30TFS	C	1/2" SWIFT	1/2"	0.35	1.38	1.85
LFCS10TAS	C	1/8" SWIFT	1/8"	0.22	0.83	1.18	LFVS30TFS	V	1/2" SWIFT	1/2"	0.35	1.38	1.85
LFVS10TAS	V	1/8" SWIFT	1/8"	0.22	0.83	1.18	LNBS30TFS	B	1/2" SWIFT	1/2"	0.35	1.38	1.85
LNBS10TAS	B	1/8" SWIFT	1/8"	0.22	0.83	1.18	LFCS30TNS	C	1/2" SWIFT	12mm	0.35	1.38	1.85
LFCS10TBS	C	1/8" SWIFT	5/32"	0.22	0.83	1.18	LFVS30TNS	V	1/2" SWIFT	12mm	0.35	1.38	1.85
LFVS10TBS	V	1/8" SWIFT	5/32"	0.22	0.83	1.18	LNBS30TNS	B	1/2" SWIFT	12mm	0.35	1.38	1.85
LNBS10TBS	B	1/8" SWIFT	5/32"	0.22	0.83	1.18	LFCS30TPS	C	1/2" SWIFT	14mm	0.35	1.40	1.85
LFCS10TCS	C	1/8" SWIFT	1/4"	0.22	0.87	1.18	LFVS30TPS	V	1/2" SWIFT	14mm	0.35	1.40	1.85
LFVS10TCS	V	1/8" SWIFT	1/4"	0.22	0.87	1.18	LNBS30TPS	B	1/2" SWIFT	14mm	0.35	1.40	1.85
LNBS10TCS	B	1/8" SWIFT	1/4"	0.22	0.87	1.18							
LFCS10THS	C	1/8" SWIFT	4mm	0.22	0.83	1.18							
LFVS10THS	V	1/8" SWIFT	4mm	0.22	0.83	1.18							
LNBS10THS	B	1/8" SWIFT	4mm	0.22	0.83	1.18							
LFCS10TJS	C	1/8" SWIFT	5mm	0.22	0.85	1.18							
LFVS10TJS	V	1/8" SWIFT	5mm	0.22	0.85	1.18							
LNBS10TJS	B	1/8" SWIFT	5mm	0.22	0.85	1.18							
LFCS10TKS	C	1/8" SWIFT	6mm	0.22	0.89	1.18							
LFVS10TKS	V	1/8" SWIFT	6mm	0.22	0.89	1.18							
LNBS10TKS	B	1/8" SWIFT	6mm	0.22	0.89	1.18							
LFCS10TLS	C	1/8" SWIFT	8mm	0.22	0.94	1.18							
LFVS10TLS	V	1/8" SWIFT	8mm	0.22	0.94	1.18							
LNBS10TLS	B	1/8" SWIFT	8mm	0.22	0.94	1.18							
LFCS20TCS	C	1/4" SWIFT	1/4"	0.28	0.98	1.42							
LFVS20TCS	V	1/4" SWIFT	1/4"	0.28	0.98	1.42							
LNBS20TCS	B	1/4" SWIFT	1/4"	0.28	0.98	1.42							
LFCS20TES	C	1/4" SWIFT	3/8"	0.29	1.18	1.61							
LFVS20TES	V	1/4" SWIFT	3/8"	0.29	1.18	1.61							
LNBS20TES	B	1/4" SWIFT	3/8"	0.29	1.18	1.61							
LFCS20TJS	C	1/4" SWIFT	5mm	0.28	0.96	1.40							
LFVS20TJS	V	1/4" SWIFT	5mm	0.28	0.96	1.40							
LNBS20TJS	B	1/4" SWIFT	5mm	0.28	0.96	1.40							
LFCS20TKS	C	1/4" SWIFT	6mm	0.28	0.98	1.40							

Code C - Controlled Flow Out
Code V - Controlled Flow In
Code B - Controlled Flow Both Directions

LFC, LFV, LNB SERIES
Female NPTF Interface
Screw Adjustment



Model Code	Func	A	Rt Angle Thread F	L1	L2
LFCU32NDS	C	10-32UNC	10-32UNC	0.39	0.95
LFVU32NDS	V	10-32UNC	10-32UNC	0.39	0.95
LNBU32NDS	B	10-32UNC	10-32UNC	0.39	0.95
LFCS10NAS	C	1/8" SWIFT	1/8" NPTF	0.65	1.18
LFVS10NAS	V	1/8" SWIFT	1/8" NPTF	0.65	1.18
LNBS10NAS	B	1/8" SWIFT	1/8" NPTF	0.65	1.18
LFCS20NBS	C	1/4" SWIFT	1/4" NPTF	0.86	1.42
LFVS20NBS	V	1/4" SWIFT	1/4" NPTF	0.86	1.42
LNBS20NBS	B	1/4" SWIFT	1/4" NPTF	0.86	1.42
LFCS25NCS	C	3/8" SWIFT	3/8" NPTF	1.04	1.61
LFVS25NCS	V	3/8" SWIFT	3/8" NPTF	1.04	1.61
LNBS25NCS	B	3/8" SWIFT	3/8" NPTF	1.04	1.61