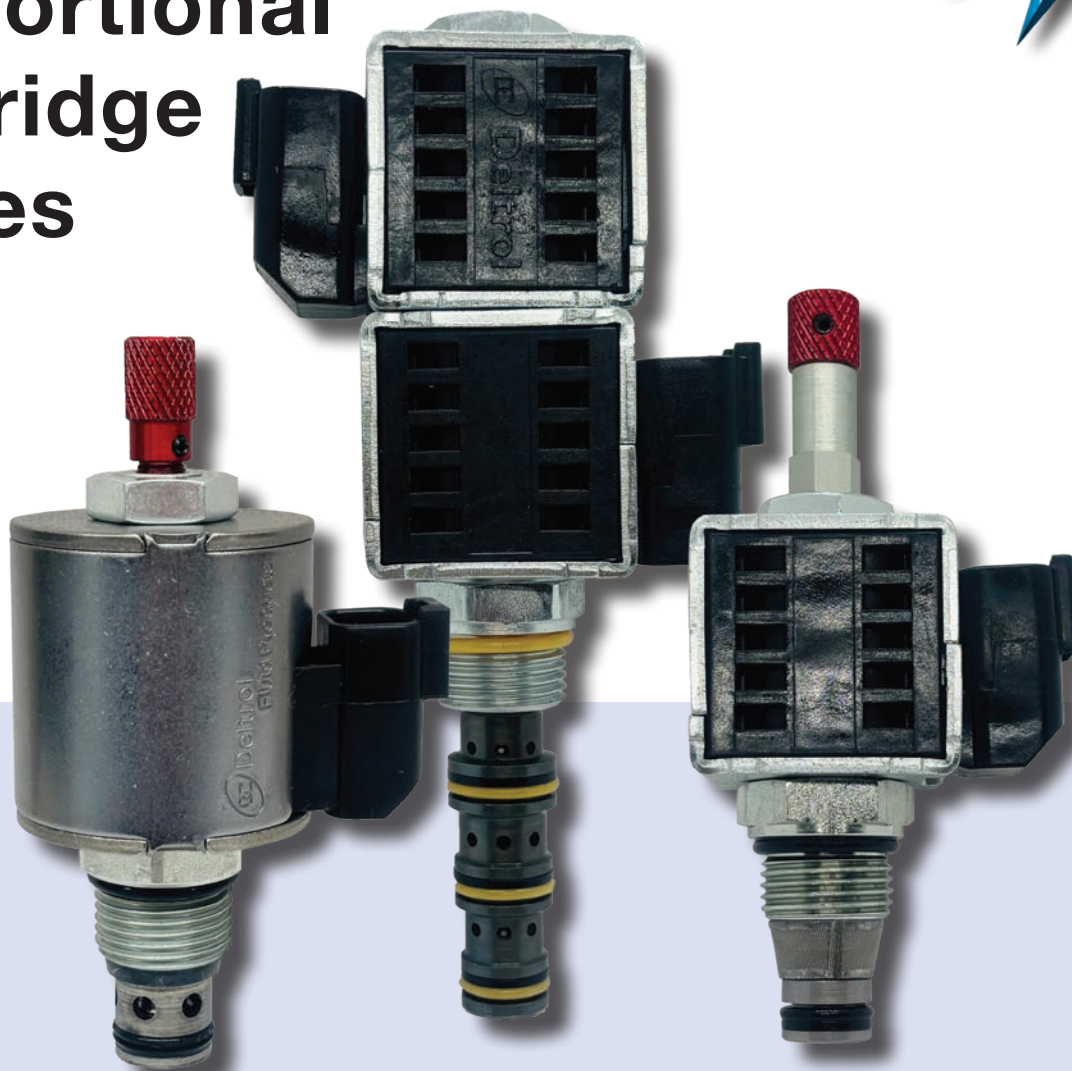


Proportional Cartridge Valves



Flow Control & Directional Control Proportional Valves

- Size 8 and 10 Common Cavity Sizes
- Up to 3500 PSI Operating Pressure
- Multiple Flow Rate Options

Proportional Flow Control Valves

Compensated Flow Control

Description / Features / Benefits

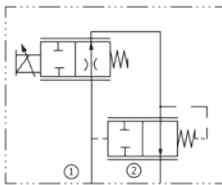
The **DPFR2-100** model is an internally-compensated, proportional flow control cartridge valve. This valve has consistent flow regardless of the load pressure, resulting in consistent machine behavior. The DPFR2-100 improves productivity with precise control of machine motion and speed.

- Size 10, 2-Way & 3-Way Options
- Normally Closed or Normally Open Flow Logic
- Multiple Flow Rate Options (including 4 GPM and 8 GPM)
- 3000 PSI Operating Pressure
- Industry common cavities (100-2, 100-3)
- Typical applications include forklift cylinder control, salt spreader motor control and motor control for track vehicles

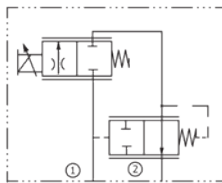


2-Way Compensated Flow Control

DPFR2-100-2NO

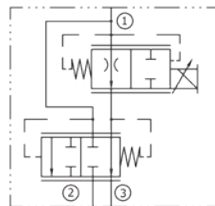


DPFR2-100-2NC

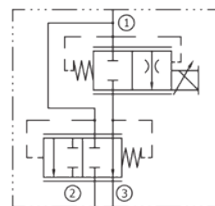


3-Way Compensated Flow Control

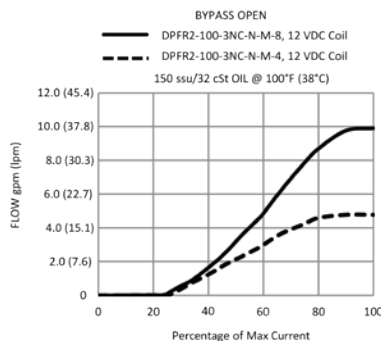
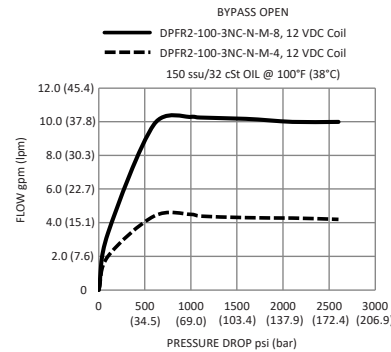
DPFR2-100-3NO



DPFR2-100-3NC



Typical Performance



Manual Override Options



(MS) Turn Screw to Override



(MB) Push Button to Override



(MK) Turn Knob to Override

How To Order

DPFR2 - **100** - ***** ****** - **N** - ***** - ***** - ****** - ****** - ******

Proportional Flow Control Valve Cavity Flow Path Function Buna N Seals Manual Override Flow Voltage Termination Porting

Flow Path	
2	2-Way
3	3-Way

Function	
NC	Normally Closed
NO	Normally Open

Manual Override	
MS	Manual Screw
MB	Manual Button
MK	Manual Knob

Flow	
4	4 GPM
8	8 GPM

Voltage	
omit	Cartridge only w/nut
D1	DC 12 Volt
D2	DC 24 Volt

Termination	
omit	Cartridge only w/nut
UE	Deutsch
HE	DIN 43650

Porting		2-Way	3-Way
omit	Cartridge only	In-Line Body w/o Cartridge	In-Line Body w/o Cartridge
2N	1/4 PTF	B-100-2-2N	B-100-3-2N
3N	3/8 PTF	B-100-2-3N	B-100-3-3N
6T	SAE 6	B-100-2-6T	B-100-3-6T
8T	SAE 8	B-100-2-8T	B-100-3-8T

Valve, Coil, and In-Line Body are supplied individually and need to be assembled. For a completed assembly consult the factory. All variations may not be configurable. Other coil termination options may be available.

Proportional Flow Control Valves

Non-Compensated Flow Control

Description / Features / Benefits

The **DPV-080/100-2NCP** model is a pilot-operated, poppet style, normally-closed proportional flow control cartridge valve. This type of valve is commonly used for load holding applications and it provides accurate control when lowering a load. An external pressure compensator is used with this valve to assure consistent performance.

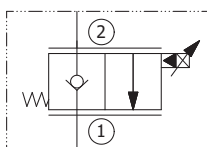
The **DPFC-100-2NC** model is a direct-acting, spool type, normally-closed proportional flow cartridge control cartridge valve. It offers a user the flexibility to choose the ideal pressure compensator for tuning their system. This results in achieving the desired maximum flow rate while using the complete resolution of the proportional valve. An externally compensated flow control can be used where instability in the system exists.

- 3000 PSI Operating Pressure
- Nominal Flow Rates up to 17 GPM
- Industry common cavities: DPV (080-2, 100-2), DPFC (100-3)

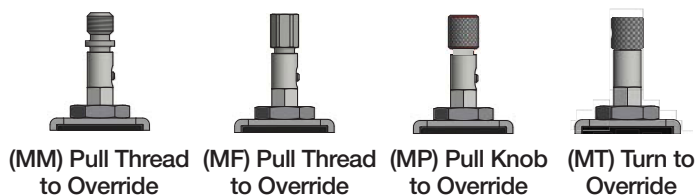


Poppet Style, Proportional Flow Control

DPV-080-2NCP / DPV-100-2NCP



Manual Override Options



How To Order

DPV	-	***	-	2	NC	-	P	-	N	-	**	-	**	-	**	-	**
Proportional Flow Control Valve		Cavity		Flow Path	Normally Closed		Poppet		Buna N Seals		Manual Override		Voltage		Termination		Porting

Cavity	
080	Series 8
100	Series 10
Voltage	
omit	Cartridge only w/nut
D1	DC 12 Volt
D2	DC 24 Volt

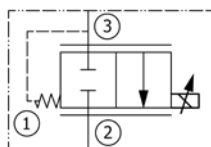
Manual Override	
omit	No Manual Override
MM	Male Pull 3/8-16 UNC
MP	Knurled Knob Pull
MF	Female Pull 1/4-28 UNF
MT	Threaded

Termination	
omit	Cartridge only w/nut
UE	Deutsch
HE	DIN 43650

Porting		Series 8	Series 10
omit	Cartridge only	In-Line Body w/o Cartridge	In-Line Body w/o Cartridge
2N	1/4 PTF	B-080-2-2N	B-100-2-2N
3N	3/8 PTF	B-080-2-3N	B-100-2-3N
4T	SAE 4	B-080-2-4T	X
6T	SAE 6	B-080-2-6T	B-100-2-6T
8T	SAE 8	X	B-100-2-8T

Spool Style, Proportional Flow Control

DPFC-100-2NC



Manual Override Options



How To Order

DPFC	-	100	-	2	NC	-	N	-	**	-	**	-	**	-	**	-	**
Proportional Flow Control Valve		Cavity		Flow Path	Normally Closed		Buna N Seals		Manual Override		Flow		Voltage		Termination		Porting

Manual Override	
omit	No Manual Override
MS	Manual Screw
MB	Manual Button

Flow	
14	14 GPM
Voltage	
omit	Cartridge only w/nut
D1	DC 12 Volt
D2	DC 24 Volt

Termination	
omit	Cartridge only w/nut
UE	Deutsch
HE	DIN 43650

Porting		In-Line Body w/o Cartridge
omit	Cartridge only	
2N	1/4 PTF	B-100-3-2N
3N	3/8 PTF	B-100-3-3N
6T	SAE 6	B-100-3-6T
8T	SAE 8	B-100-3-8T

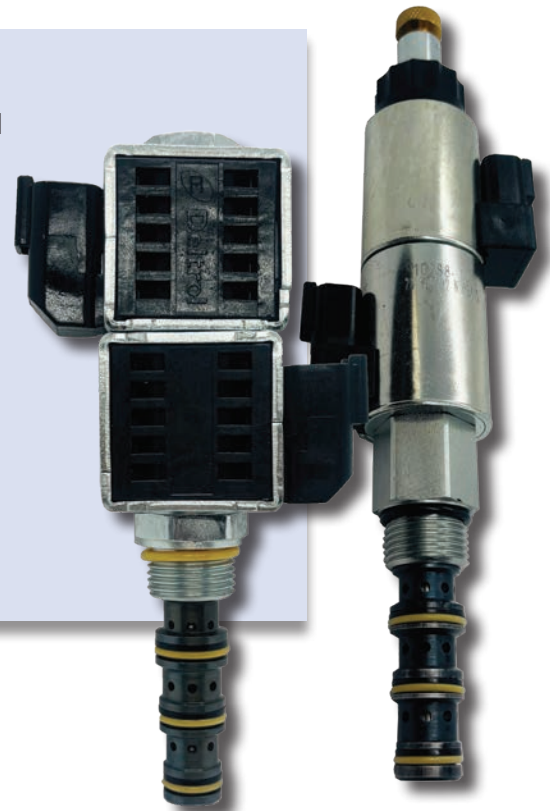
Valve, Coil, and In-Line Body are supplied individually and need to be assembled. For a completed assembly consult the factory. All variations may not be configurable. Other coil termination options may be available.

Proportional Directional Control Valves

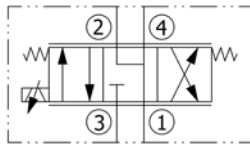
Description / Features / Benefits

The **DPV-080/100-34** model is a 3-position, 4-way proportional directional control cartridge valve. When used with an external flow compensator, it allows for precise control of the speed of motor and cylinder motion. The DPV-080/100-34 ensures smooth movement of a load as well as enhances the operator's ability to stop the load at a desired position.

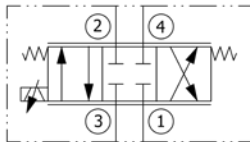
- Size 8 and 10: Motor & Closed Center Spool Options
- Size 8: Standard Flow – 4 GPM Nominal
Low Flow "L" – 2 GPM Nominal
- Size 10: Standard Flow – 6 GPM Nominal
- Operating Pressure - 3500 PSI
- Industry common cavities (080-4, 100-4)



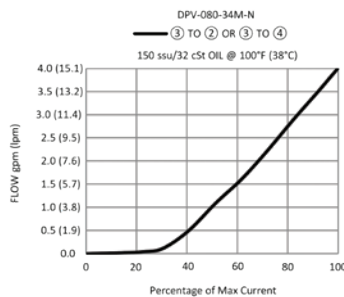
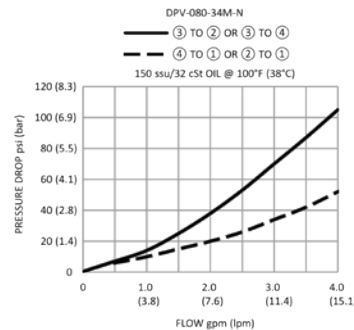
DPV-080-34M / DPV-100-34M
Motor Spool, Proportional
Directional Control



DPV-080-34C / DPV-100-34C
Closed Spool, Proportional
Directional Control



Typical Performance



Manual Override



Series 8
(M) Push or Pull to
Desired Override Function



Series 10
(M) Rotate Knob CW and Push
or Rotate CCW and Pull to
Desired Override Function

How To Order

DPV - ******* - **34** * - **N** - * - * - ** - ** - **
Proportional Cavity Flow Function Buna N Flow Manual Voltage Termination Porting
Directional Control Valve

Cavity	
080	Series 8
100	Series 10
Function	
M	Motor Center
C	Closed Center

Flow	
omit	Standard Flow
L	Low Flow
Manual Override	
omit	No Manual Override
M	Manual Override

Voltage	
omit	Cartridge only w/nut
D1	DC 12 Volt
D2	DC 24 Volt
Termination	
omit	Cartridge only w/nut
UE	Deutsch
HE	DIN 43650

Porting		Series 8	Series 10
omit	Cartridge only	In-Line Body w/o Cartridge	In-Line Body w/o Cartridge
2N	1/4 PTF	B-080-4-2N	B-100-4-2N
3N	3/8 PTF	B-080-4-3N	B-100-4-3N
4T	SAE 4	B-080-4-4T	X
6T	SAE 6	B-080-4-6T	B-100-4-6T
8T	SAE 8	X	B-100-4-8T

Valve, Coil, and In-Line Body are supplied individually and need to be assembled. For a completed assembly consult the factory. All variations may not be configurable. Other coil termination options may be available.



© Copyright 2026 Deltrol Fluid Products

3001 Grant Avenue, Bellwood Illinois 60104
Phone: (708) 547-0500, Fax: (708) 547-6881
E-Mail: Info@deltrolfluid.com

www.deltrolfluid.com



ISO 9001:2015
CERTIFIED