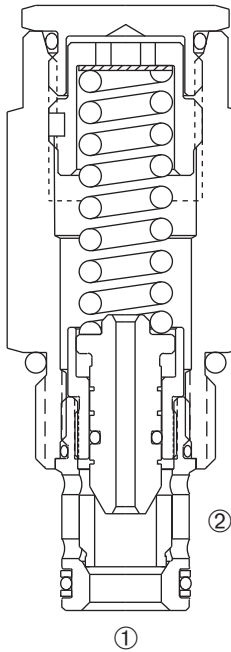
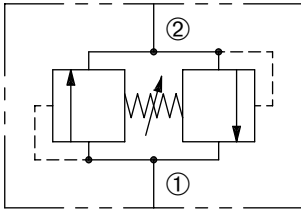


DBRVS-100-*-H

Tamper-Resistant, Direct-Acting,
Bi-Directional Relief Valve

SERIES 10



DESCRIPTION

An adjustable, bi-directional poppet type cartridge valve designed to limit pressure in hydraulic circuits.

OPERATION

The DBRVS-100-*-H is comprised of two relief valves which prevent flow from ① to ② or ② to ① until the set crack pressure is achieved at either port ① or ②. When the set crack pressure is reached, the poppet unseats allowing flow from ① to ② or ② to ① protecting the circuit from over pressurization.

FEATURES and BENEFITS

- Rapid response to pressure surges.
- Low pressure rise.
- Hardened poppet and seat for long life.
- Hidden adjustment (tamper resistant).
- Industry common cavity.
- Compact size.

SPECIFICATIONS

Operating Pressure: 5000 PSI (345 Bar)

Flow: See PRESSURE DROP VS. FLOW graph.
Nominal Flow 20 GPM (75.7 L/min).

Internal Leakage: 5 in.³/min. (82cc/min.) max. at reseal.

Crack Pressure Defined: Determined at .25 gpm (0.9 L/min.)

Reseat Pressure: Nominal 80% of crack pressure.

Spring Range: 100 to 5000 PSI (7 to 345 Bar)
Preset: 2500 PSI (172 Bar)

Temperature: -30° F to +250° F (-35°C to +120° C)

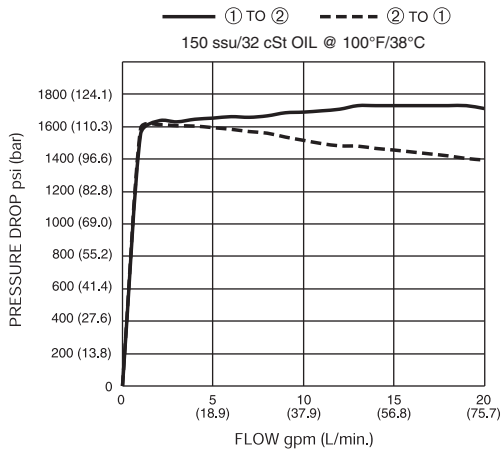
Recommended Filtration: ISO 20/18/14

Fluids: Mineral-based fluids. For other fluid compatibility consult factory.

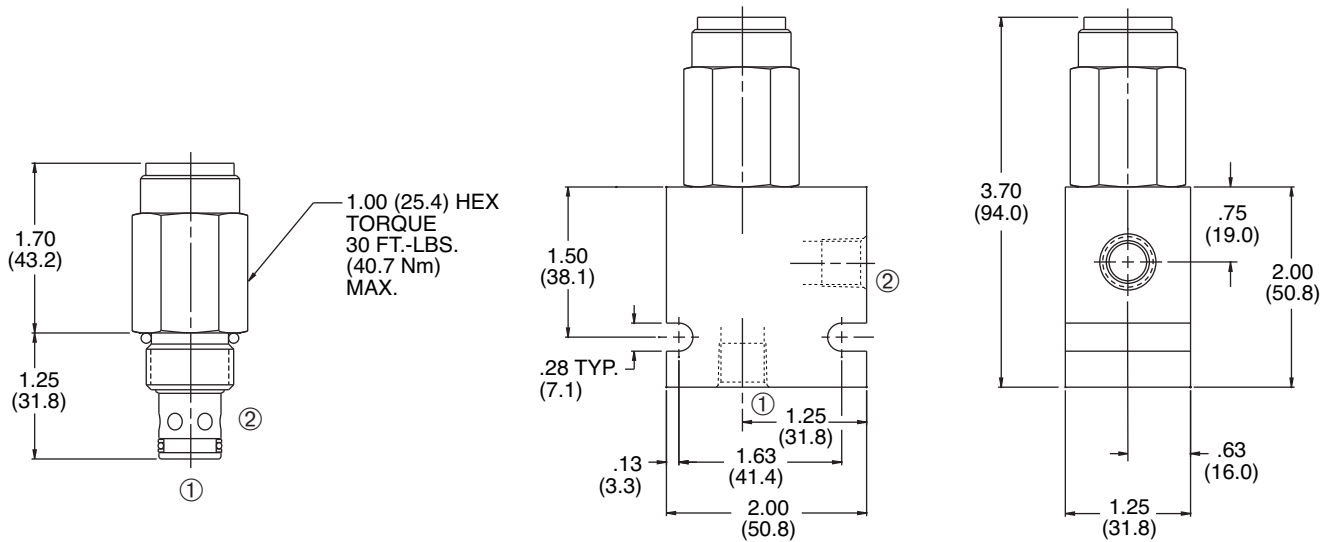
Cavity/Cavity Tool: 100-2, see page 11.10.2

In-Line Body Material: Anodized 6061T6 aluminum
alloy rated at 3000 PSI (207 Bar).

PRESSURE DROP VS. FLOW



INSTALLATION DIMENSIONS



() Parentheses = Millimeters

HOW TO ORDER

