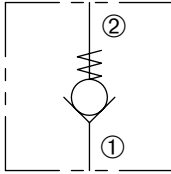


# DCV-100-PB

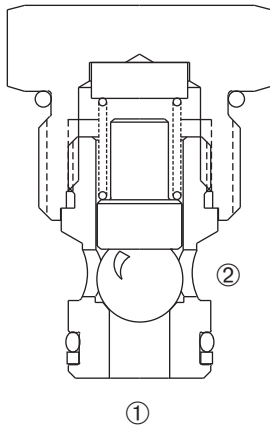
Direct-Acting, Ball-Type  
Check Valve

## SERIES 10



### DESCRIPTION

A cartridge valve designed to allow free flow in one direction, while preventing flow in the opposite direction. This valve is commonly used as a load-holding or blocking valve.



### OPERATION

Pressure at ① overcomes the spring-bias ball and allows free flow to ②. Flow in the opposite direction, from ② to ①, is blocked by the ball.

### FEATURES and BENEFITS

- Guide ball assembly
- Torlon® ball for positive shut-off.
- Low leak.
- Industry common cavity.
- Compact size.

### SPECIFICATIONS

**Operating Pressure:** 3000 PSI (207 Bar)

**Flow:** See PRESSURE DROP VS. FLOW graph.

Nominal flow 20 GPM (75.7 L/min).

**Internal Leakage:** Less than 2 drops/min. max. at 3000 PSI (207 Bar)

**Crack Pressure:** 5 PSI (0.3 Bar)

10 PSI (0.7 Bar)

30 PSI (2.1 Bar)

60 PSI (4.1 Bar)

100 PSI (6.9 Bar)

**Temperature:** -30°F to +220°F (-35°C to +104°C)

**Recommended Filtration:** Critical Application – ISO 17/15/13

Non-Critical Application – ISO 20/18/14

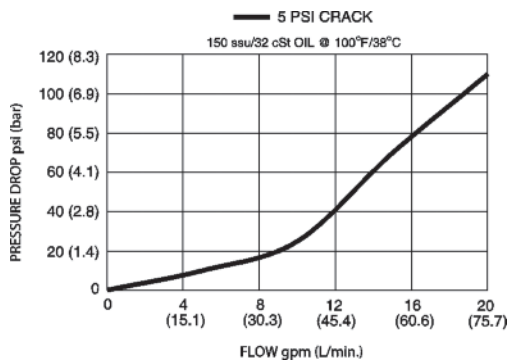
**Fluids:** Mineral-based fluids.

For other fluid compatibility, consult factory.

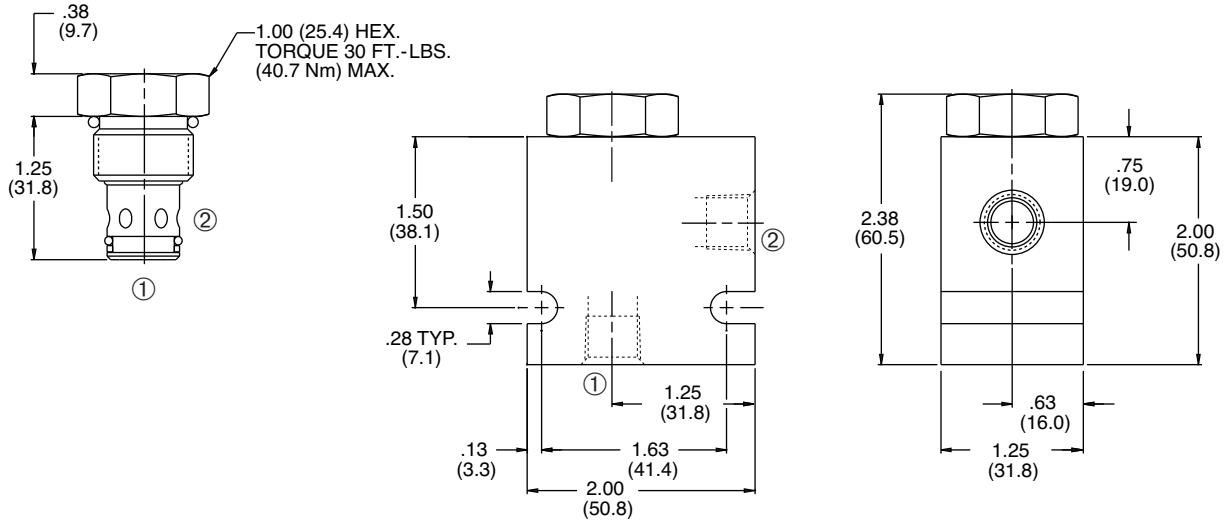
**Cavity/Cavity Tool:** 100-2, see page 11.10.2

**In-Line Body Material:** Anodized 6061T6 aluminum  
alloy rated at 3000 PSI (207 Bar).

### PRESSURE DROP VS. FLOW

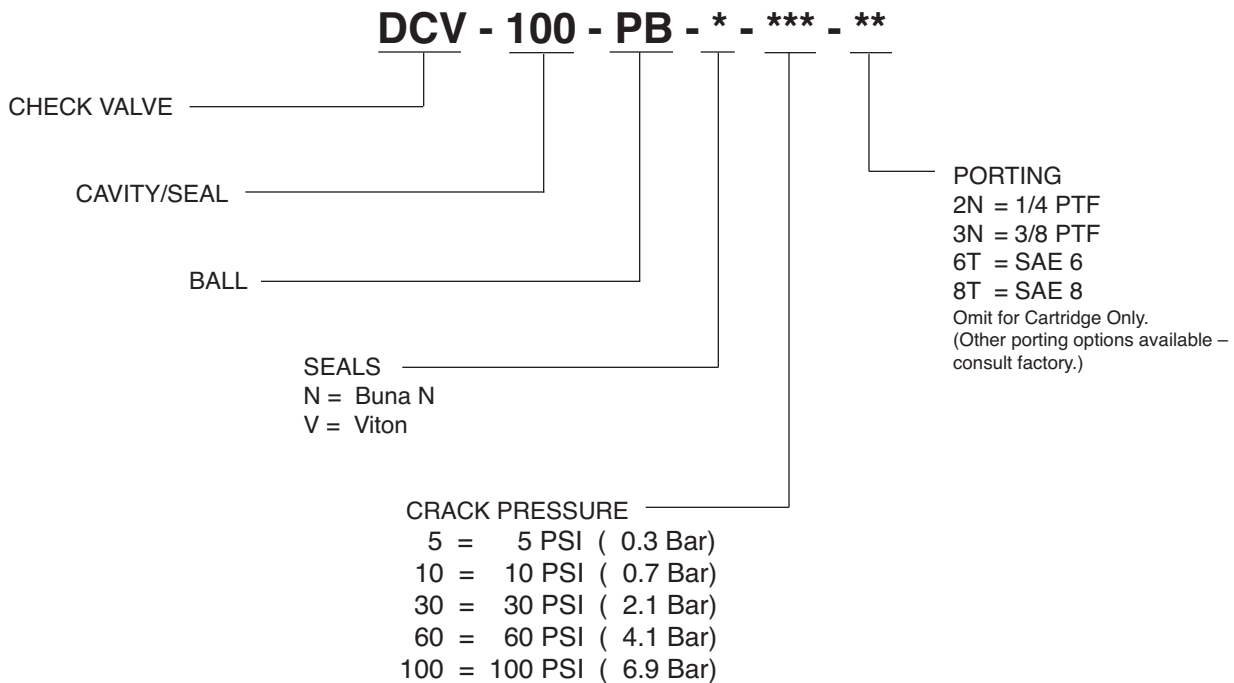


**INSTALLATION DIMENSIONS**



( ) Parentheses = Millimeters

**HOW TO ORDER**



SOLENOID  
CHECK  
MOTION CONTROL  
FLOW CONTROL  
RELIEF  
PRESSURE CONTROL  
SEQUENCE  
SHUTTLE  
DIRECTIONAL VALVES  
ACCESSORIES  
TECHNICAL DATA