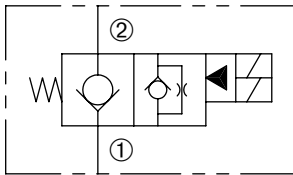


# DDSV-080-2NCP

Normally-Closed, Two-Way, Two-Position,  
Dual-Coil, Pilot-Operated Solenoid Valve

## SERIES 8



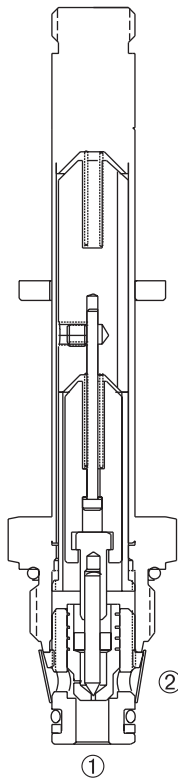
### DESCRIPTION

A cartridge valve designed with positive shut off, low leakage, to be used in load holding applications where system requires redundant methods of operation.

### OPERATION

When de-energized, the DDSV-080-2NCP acts as a check valve, allowing flow from ① to ②, while blocking flow from ② to ①.

When either the top primary or bottom redundant coil is energized, the poppet lifts to open the ② to ① flow path.



### FEATURES and BENEFITS

- 4000 PSI rating (276 Bar).
- Continuous-duty solenoid.
- Efficient wet-armature construction.
- Hardened poppet and seat for long life.
- Cartridges are voltage interchangeable.
- Optional coil voltages and terminations.
- Filter screen standard.
- Low leak valve available.
- Industry common cavity.
- Compact size.

### SPECIFICATIONS

**Operating Pressure:** 4000 PSI (276 Bar)

**Flow:** See PRESSURE DROP VS. FLOW graph.

**Internal Leakage:** 5 drops/min. max. at 4000 PSI (276 Bar)  
Low leakage available-

Less than 2 drops/min. max. at 4000 PSI (276 Bar)

**Temperature:** -30°F to +250°F (-35°C to +120°C)

**Coil Rating:** [Continuous from 85% to 110% of rated voltage.](#)

**Current Draw:** 12 VDC is 1.3 amps.

**Minimum Pull-In Voltage:** 85% of rated voltage at 4000 PSI (276 Bar)

**Response Time:** 80% of final change of state with 100% voltage supplied at 100% of nominal flow rating.

**Pull-In:** 12 VDC 16 m. sec. **Drop-Out:** 12 VDC 18 m. sec.

**Recommended Filtration:** Critical Application – ISO 17/15/13

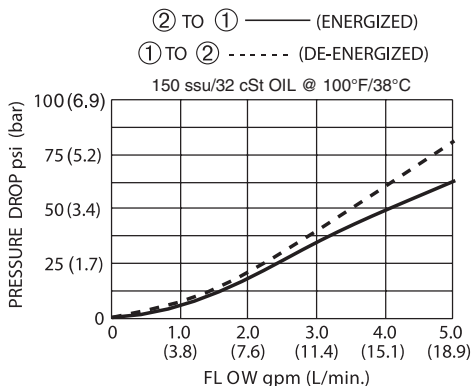
Non-Critical Application – ISO 20/18/14

**Fluids:** Mineral-based fluids. For other fluid compatibility, consult factory.

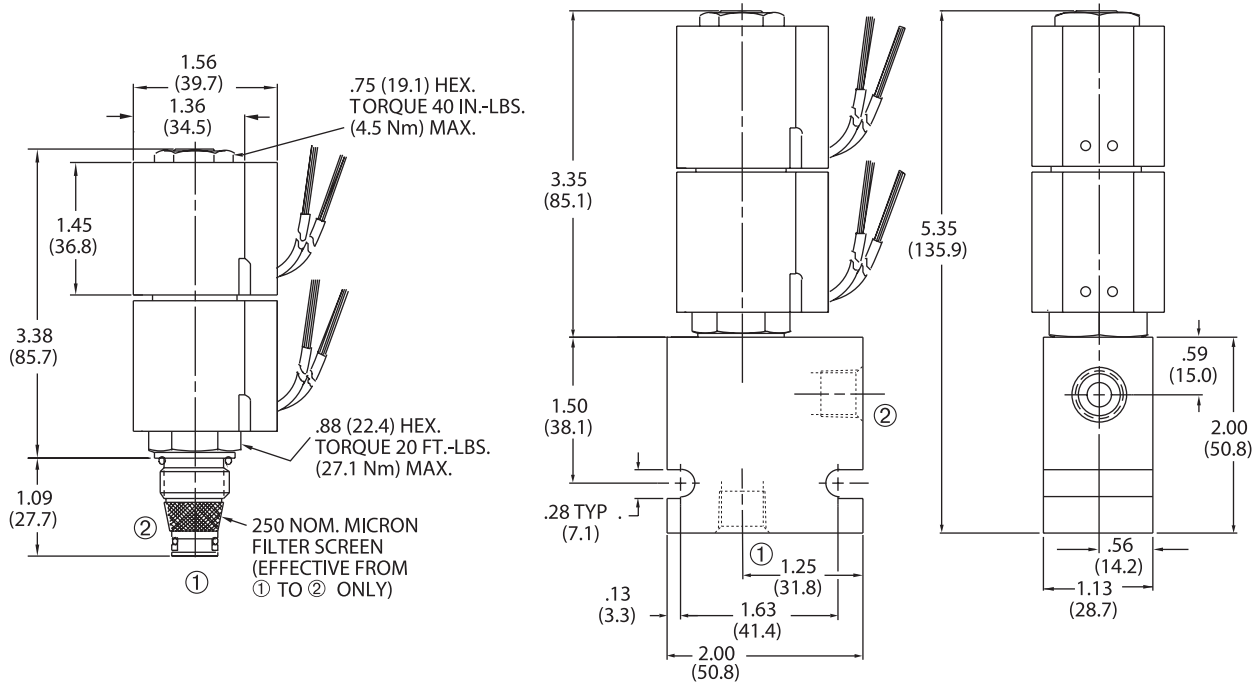
**Cavity/Cavity Tool:** [080-2, see page 11.08.2](#)

**In-Line Body Material:** Anodized 6061T6 aluminum alloy rated at 3000 PSI (207 Bar).

### PRESSURE DROP VS. FLOW



## INSTALLATION DIMENSIONS



( ) Parentheses = Millimeters

## HOW TO ORDER

**DDSV - 080 - 2 NC P - \* - \* - \* - \* - \***

SOLENOID VALVE

CAVITY/SEAL

FLOW PATH

NORMALLY CLOSED

POPPET

SEALS  
N = Buna N  
V = Viton

M = Manual Override  
(Omit for standard)

L = Low Leak Option  
(Omit for standard)

D = DC  
A = AC

PORTING

2N = 1/4 PTF

3N = 3/8 PTF

6T = SAE 6

8T = SAE 8

Omit for Cartridge Only

COIL CONNECTION

DE = Double Lead

SE = Single Lead

HS = Hirschmann®

CS = Conduit

BE = Double Spade

EE = Single Stud

UE = Deutsch

VOLTAGE

1 = 12 Volt

2 = 24 Volt

5 = 120 Volt

6 = 240 Volt

9 = 20 Volt

10 = 10 Volt

Omit coil for cartridge only with nut.

Other porting and coil options available – consult factory.