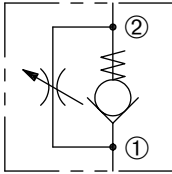


DFC-080

Adjustable,
Flow Control Valve

SERIES 8

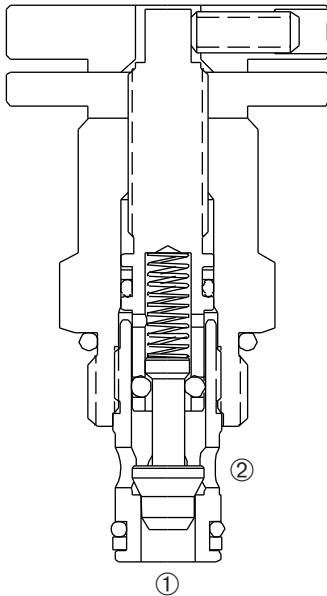


DESCRIPTION

A cartridge valve designed to provide variable flow restriction in one direction with free flow in the opposite direction.

OPERATION

The DFC-080 varies flow restriction by adjusting needle in or out. Flow is metered from ② to ①. Free reverse flow is from ① to ②.



FEATURES and BENEFITS

- Hardened poppet and seat for long life.
- Aluminum knob and disc nut.
- Full range of adjustments.
- Adjustment may be locked in place.
- Industry common cavity.
- Compact size.

SPECIFICATIONS

Operating Pressure: 3000 PSI (207 Bar)

Flow: 10 gpm (37.9 L/min.) max recommended input.

Temperature: -30°F to +250°F (-35°C to +120°C)

Recommended Filtration: ISO 20/18/14

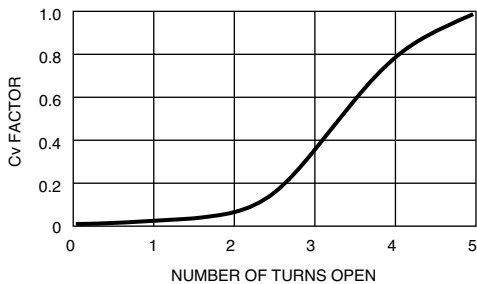
Fluids: Mineral-based fluids.

For other fluid compatibility, consult factory.

Cavity/Cavity Tool: [_080-2](#), see page 11.08.2

In-Line Body Material: Anodized 6061T6 aluminum alloy rated at 3000 PSI (207 Bar).

CV FACTOR VS. TURNS OPEN

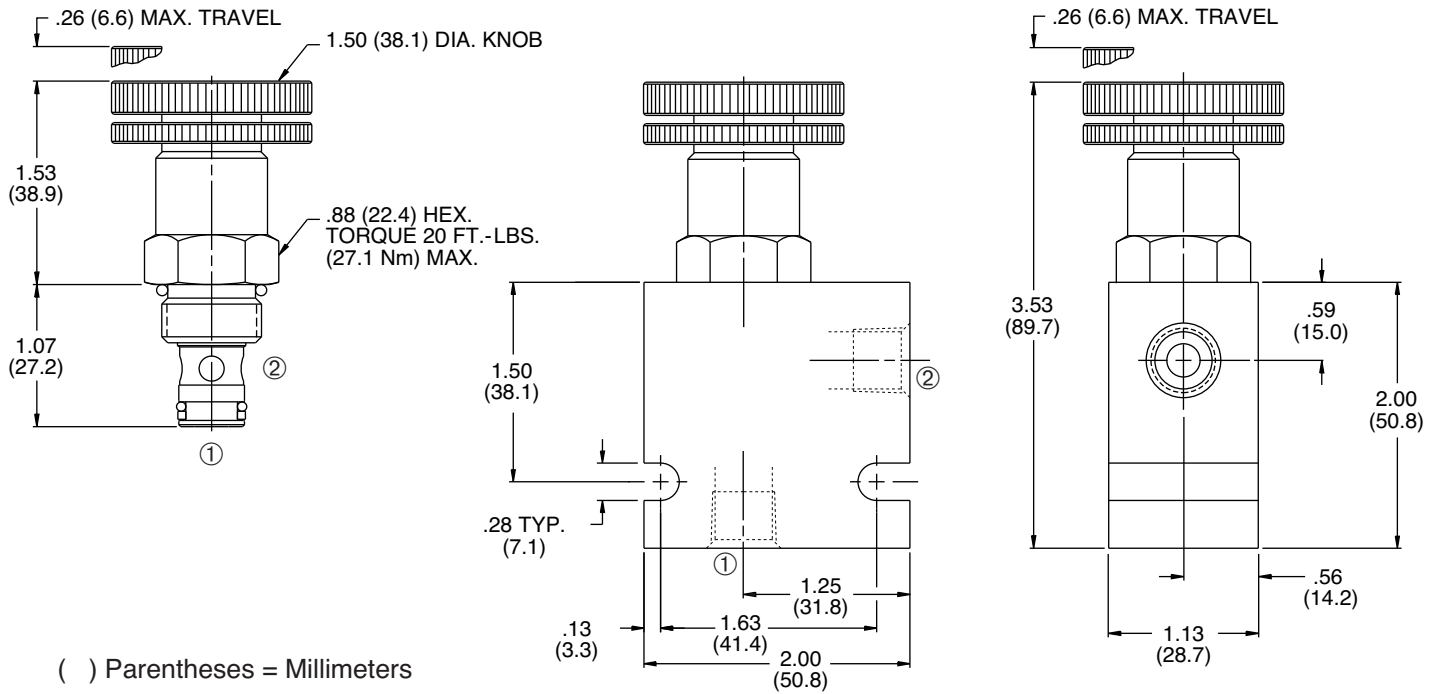


$$\text{FLOW IN GPM} = \frac{C_v \sqrt{P_1 - P_2}}{\sqrt{G_f}}$$

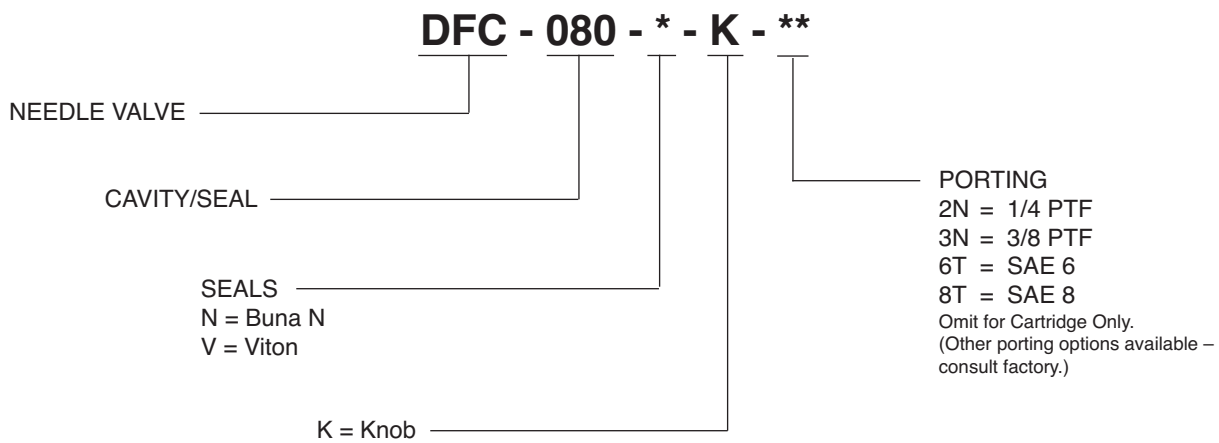
C_v = Flow Coefficient
 P_1 = Inlet Pressure (psi)
 P_2 = Outlet Pressure (psi)

G_f = specific gravity of medium at operating temperature in °F.

INSTALLATION DIMENSIONS



HOW TO ORDER



SOLENOID
CHECK
MOTION CONTROL
FLOW CONTROL
RELIEF
PRESSURE CONTROL
SEQUENCE
SHUTTLE
DIRECTIONAL VALVES
ACCESSORIES
TECHNICAL DATA