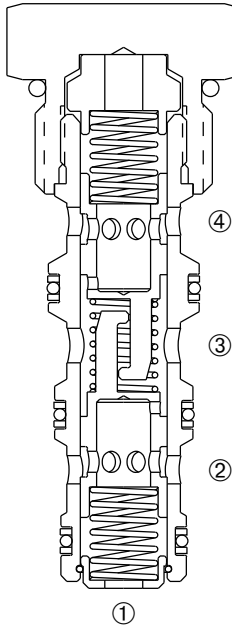
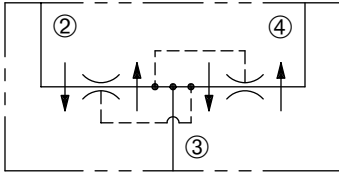


# DFD-100

Pressure-Compensated,  
Flow Divider/Combiner Valve

## SERIES 10



## DESCRIPTION

A cartridge valve designed to divide or combine flow at designated ratios regardless of load pressures.

## OPERATION

In the dividing mode, the DFD-100 will split the input flow from port ③ to ports ② and ④ per the ratio specified.

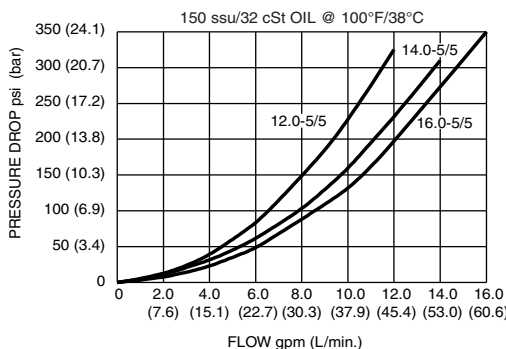
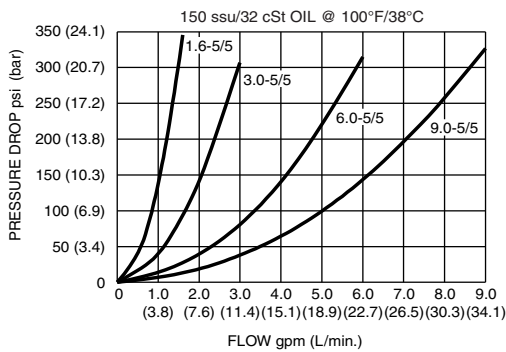
The DFD-100 will combine input flows from ports ② and ④ to a common port ③.

This valve has no port ① function.

## FEATURES and BENEFITS

- Pressure-compensated.
- Quiet response.
- Optional dividing/combining ratios.
- Industry common cavity.
- Compact size.

## PRESSURE DROP VS. FLOW



## SPECIFICATIONS

**Operating Pressure:** 3000 PSI (207 Bar) A minimum pressure differential of 40 psid is required to operate valve.

**Flow:** See max. rated input flow in ordering table.

**Flow Tolerances:** ±10% from 30-100% of rated flow for all 5/5 models except 16.0-5/5 which is ±10% from 40-100% of rated flow. (Consult factory for all other models.)

**Temperature:** -30° F to +250° F (-35°C to +120° C)

**Recommended Filtration:** ISO 17/15/13

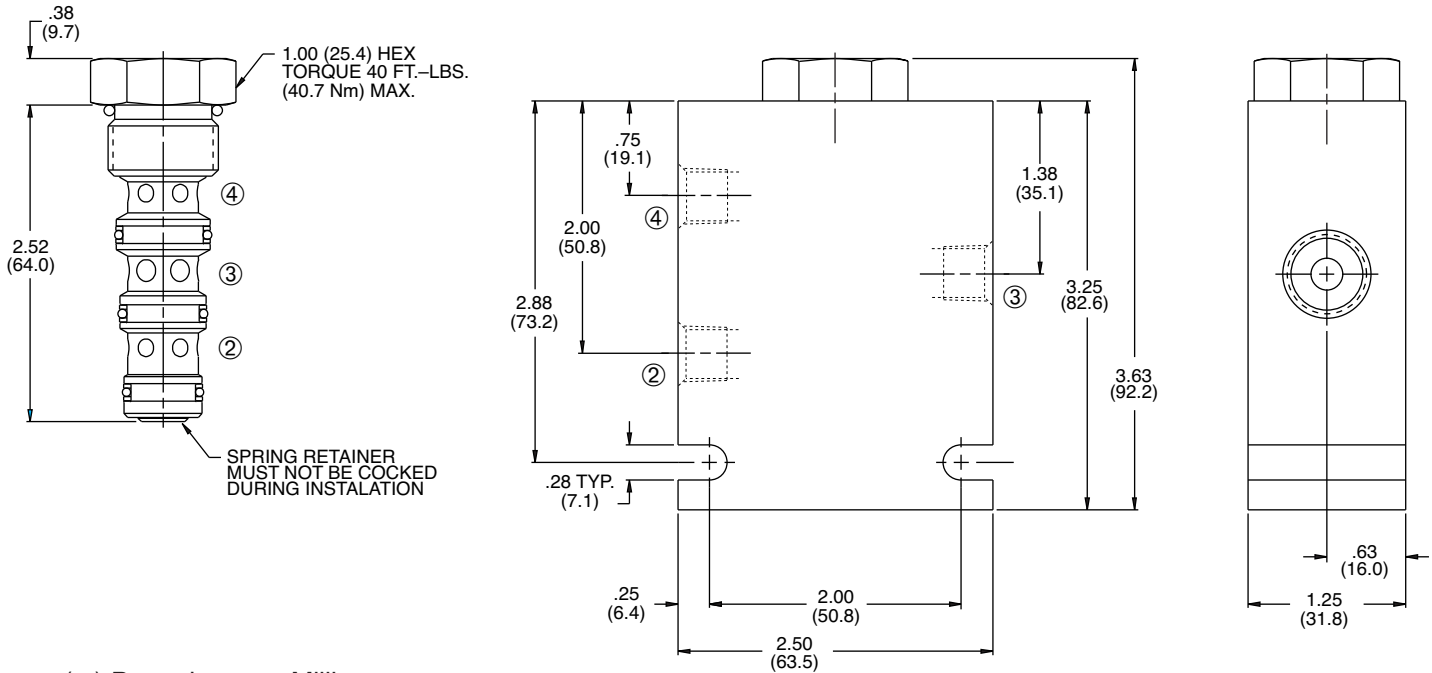
**Fluids:** Mineral-based fluids.

For other fluid compatibility consult factory.

**Cavity/Cavity Tool:** 100-4, see page 11.10.4

**In-Line Body Material:** Anodized 6061T6 aluminum alloy rated at 3000 PSI (207 Bar).

**INSTALLATION DIMENSIONS**



( ) Parentheses = Millimeters

**HOW TO ORDER**

**DFD - 100 - \* - \*\*\*\* - \*/\* - \*\***

FLOW DIVIDER/  
COMBINER VALVE

CAVITY/SEAL

SEALS  
N = Buna N  
V = Viton

MAX RATED - DIVIDING OR COMBINING  
INPUT FLOW RATIO(PORT 2 / PORT 4)

1.6 - 5/5 =	1.6 GPM ( 6.1 L/min.)	- 50:50
2.5 - 7/3 =	2.5 GPM ( 9.5 L/min.)	- 67:33
2.5 - 3/7 =	2.5 GPM ( 9.5 L/min.)	- 33:67
3.0 - 5/5 =	3.0 GPM (11.4 L/min.)	- 50:50
4.5 - 7/3 =	4.5 GPM (17.0 L/min.)	- 67:33
4.5 - 3/7 =	4.5 GPM (17.0 L/min.)	- 33:67
6.0 - 5/5 =	6.0 GPM (22.7 L/min.)	- 50:50
7.5 - 6/4 =	7.5 GPM (28.4 L/min.)	- 60:40
7.5 - 4/6 =	7.5 GPM (28.4 L/min.)	- 40:60
9.0 - 5/5 =	9.0 GPM (34.1 L/min.)	- 50:50
9.0 - 7/3 =	9.0 GPM (34.1 L/min.)	- 67:33
9.0 - 3/7 =	9.0 GPM (34.1 L/min.)	- 33:67
12.0 - 5/5 =	12.0 GPM (45.4 L/min.)	- 50:50
12.5 - 7/3 =	12.5 GPM (47.3 L/min.)	- 67:33
12.5 - 3/7 =	12.5 GPM (47.3 L/min.)	- 33:67
14.0 - 5/5 =	14.0 GPM (53.0 L/min.)	- 50:50
14.0 - 6/4 =	14.0 GPM (53.0 L/min.)	- 60:40
14.0 - 4/6 =	14.0 GPM (53.0 L/min.)	- 40:60
16.0 - 5/5 =	16.0 GPM (60.6 L/min.)	- 50:50

PORTING  
2N = 1/4 PTF  
3N = 3/8 PTF  
6T = SAE 6  
8T = SAE 8

Omit for Cartridge Only.  
(other porting  
options available –  
consult factory)

(Use special  
flow divider  
bodies with  
no port ①.)

(Other options available –  
consult factory)

SOLENOID  
CHECK  
MOTION CONTROL  
FLOW CONTROL  
RELIEF  
PRESSURE CONTROL  
SEQUENCE  
SHUTTLE  
DIRECTIONAL VALVES  
ACCESSORIES  
TECHNICAL DATA