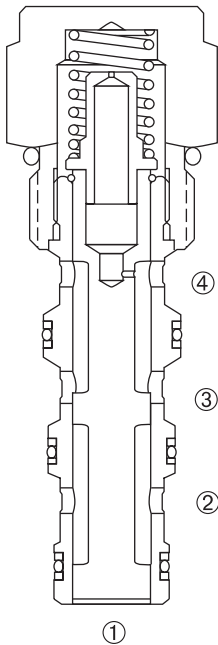
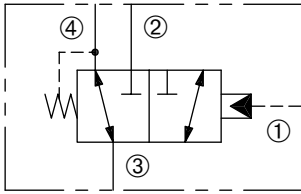


# DPOD-100-3

Pilot-Operated, Three-Way, Two-Position,  
Directional Control Valve

## SERIES 10



### DESCRIPTION

A cartridge valve designed as a pilot-operated, three-way, two-position, spool-type, directional valve.

### OPERATION

With no pilot signal at port ①, port ② is blocked and flow is allowed between port ③ and ④. With the required pilot signal applied at port ①, the valve shifts to allow flow between ports ③ and ② while blocking flow at port ④.

The bias spring which is common to port ④ returns the spool to its original position when the pilot signal is removed.

Pressure at port ④ must be considered when determining the required pressure to shift.

### FEATURES and BENEFITS

- Hardened spool and sleeve for long life.
- Industry common cavity.
- Compact size.

### SPECIFICATIONS

**Operating Pressure:** 3000 PSI (207 Bar)

**Flow:** See PRESSURE DROP VS. FLOW graph.

Nominal Flow 10 GPM (37.9 L/min).

**Internal Leakage:** 5 in<sup>3</sup>/min. (82cc/min.) max. at 3000 PSI (207 Bar)

**Pilot Pressure:** 125 PSI (8.6 Bar)

**Temperature:** -30°F to +250°F (-35°C to +120°C)

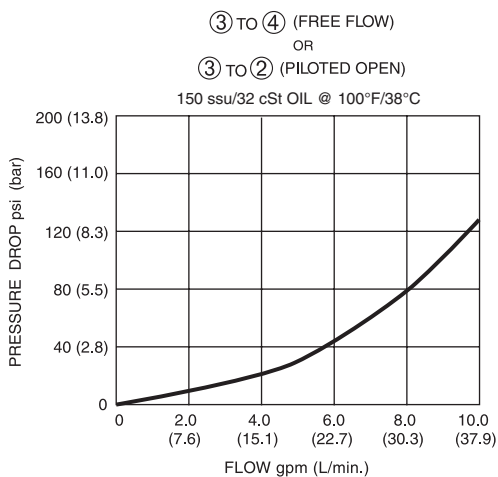
**Recommended Filtration:** ISO 17/15/13

**Fluids:** Mineral-based fluids. For other fluid compatibility, consult factory.

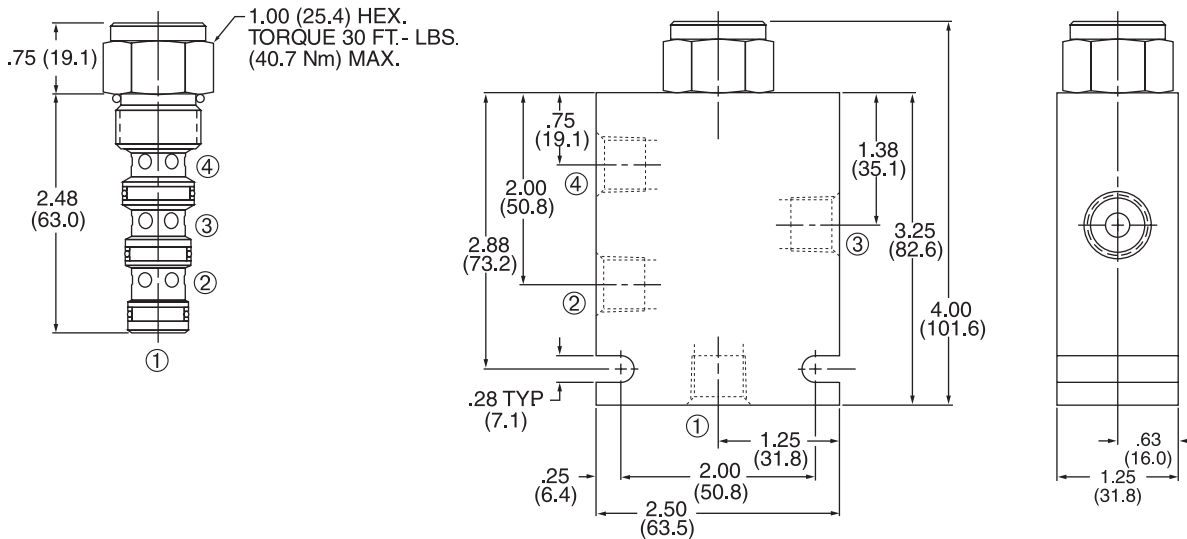
**Cavity/Cavity Tool:** 100-4, see page 11.10.4

**In-Line Body Material:** Anodized 6061T6 aluminum alloy rated at 3000 PSI (207 Bar).

### PRESSURE DROP VS. FLOW



## INSTALLATION DIMENSIONS



( ) Parentheses = Millimeters

## HOW TO ORDER

