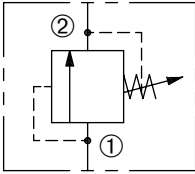


# DPOR-080

Adjustable, Pilot-Operated  
Relief Valve

## SERIES 8

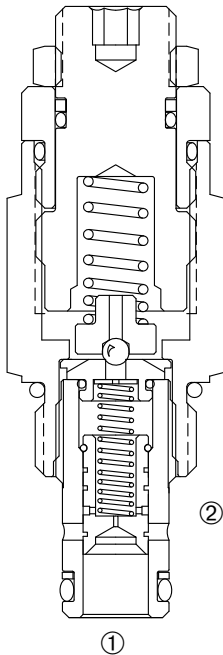


### DESCRIPTION

An adjustable, pilot-operated spool cartridge valve designed to limit flow in hydraulic circuits.

### OPERATION

The DPOR-100 prevents flow from ① to ② until pressure at ① exceeds the set crack pressure and opens the pilot section. The pilot flow creates a pressure differential across the spool which causes the valve to open allowing flow from ① to ② and thus protecting the circuit from over pressurization.



### FEATURES and BENEFITS

- Rapid response to pressure surges.
- Quiet operation.
- Low pressure rise.
- High accuracy of pilot operated design.
- Hardened parts for long life.
- Adjustment may be locked in place.
- Tamper resistant option.
- Adjustment prevents spring from going solid.
- Industry common cavity.
- Compact size.
- High flow capacity.

### SPECIFICATIONS

**Operating Pressure:** 5000 PSI (345 Bar)

**Flow:** See PRESSURE DROP VS. FLOW graph

**Internal Leakage:** 5 in.<sup>3</sup>/min (82 cc/min.) max. at 80% of crack pressure

**Crack Pressure Defined:** Determined at .25 GPM (1.0 L/min.)

**Re-Set Pressure:** Nominal 80% of crack pressure.

**Spring Range:** 300 to 5000 PSI (20 to 345 Bar)

Preset (See HOW TO ORDER)

**Temperature:** -30°F to +250°F (-35°C to +120°C).

**Recommended Filtration:** ISO 17/15/13

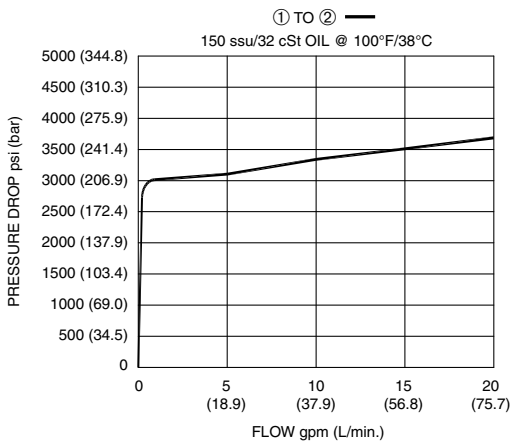
**Fluids:** Mineral-based fluids.

For other fluid compatibility, consult factory

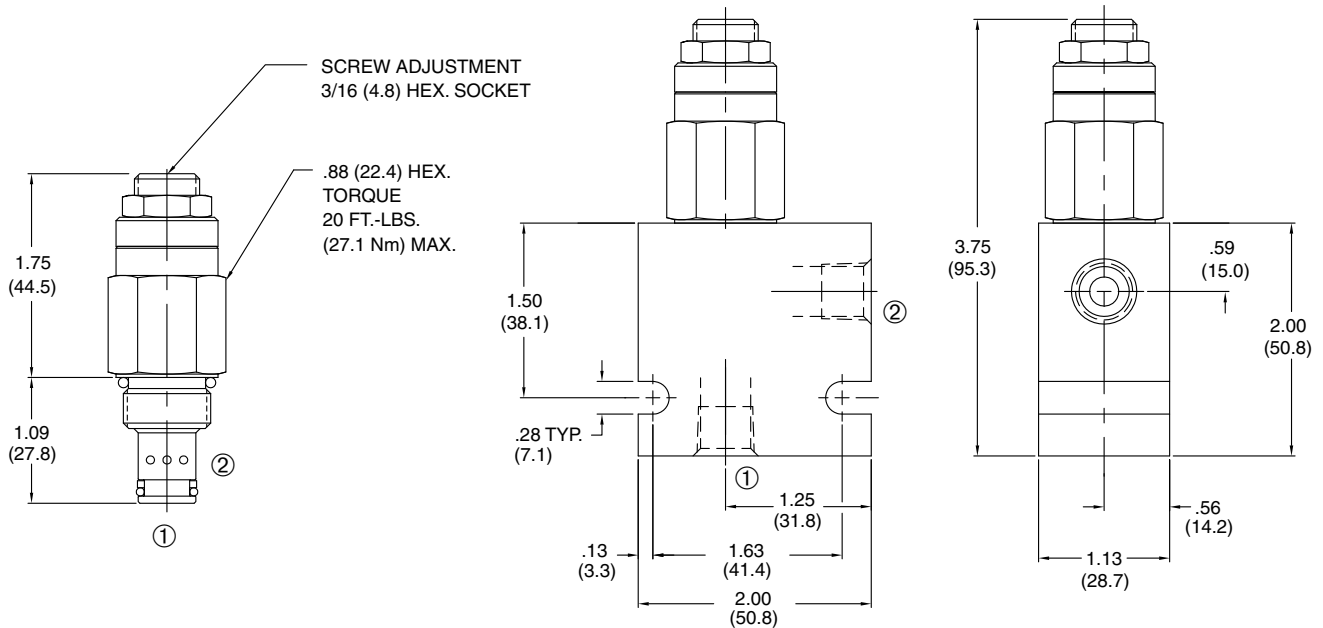
**Cavity/Cavity Tool:** 080-2, see page 11.08.2

**In-Line Body Material:** Anodized 6061T6 aluminum alloy rated at 3000 PSI (207 Bar).

### PRESSURE DROP VS. FLOW



**INSTALLATION DIMENSIONS**



( ) Parentheses = Millimeters

**HOW TO ORDER**

