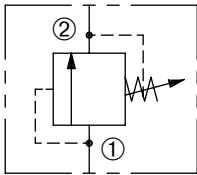


DPOR-100

Adjustable, Pilot-Operated
Relief Valve

SERIES 10

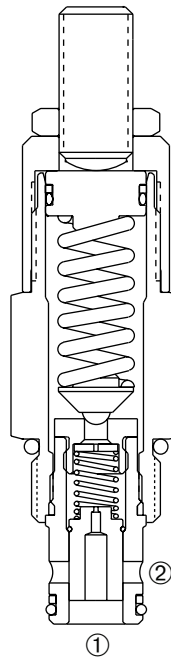


DESCRIPTION

An adjustable, pilot-operated spool type cartridge valve designed to limit pressure in hydraulic circuits.

OPERATION

The DPOR-100 prevents flow from ① to ② until pressure at ① exceeds the set crack pressure and opens the pilot section. The pilot flow creates a pressure differential across the spool which causes the valve to open allowing flow from ① or ② protecting the circuit from over pressurization.



FEATURES and BENEFITS

- Rapid response to pressure surges.
- Low pressure rise.
- Accurate pilot-operated design.
- Hardened poppet and seat for long life.
- Hidden adjustment (tamper resistant) option.
- Aluminum knob and disc nut option.
- Adjustment may be locked in place.
- Industry common cavity.
- Compact size.

SPECIFICATIONS

Operating Pressure: 3000 PSI (207 Bar)

Flow: See PRESSURE DROP VS. FLOW graph.
Nominal Flow 30 GPM (113.6 L/min).

Internal Leakage: 5 in.³/min. (82cc/min.) max. at reseal.

Crack Pressure Defined: Determined at .25 gpm (0.9 L/min.)

Reseat Pressure: Nominal 80% of crack pressure.

Spring Range: 100 to 400 PSI (7 to 28 Bar)

Preset: 300 PSI (21 Bar)

300 to 2000 PSI (21 to 138 Bar)

Preset: 1000 PSI (69 Bar)

400 to 3000 PSI (28 to 207 Bar)

Preset: 2000 PSI (138 Bar)

600 to 4000 PSI (41 to 276 Bar)

Preset: 3000 PSI (207 Bar)

Temperature: -30°F to +250°F (-35°C to +120°C).

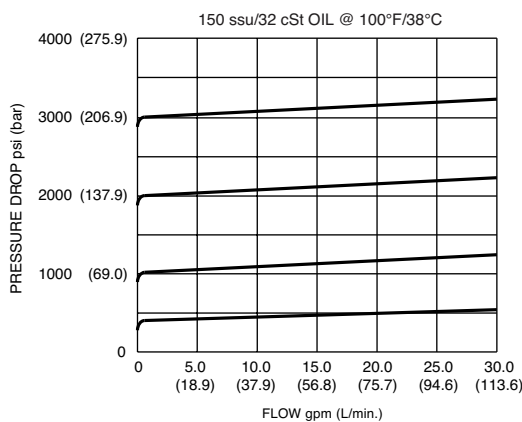
Recommended Filtration: ISO 20/18/14

Fluids: Mineral-based fluids. For other fluid compatibility, consult factory.

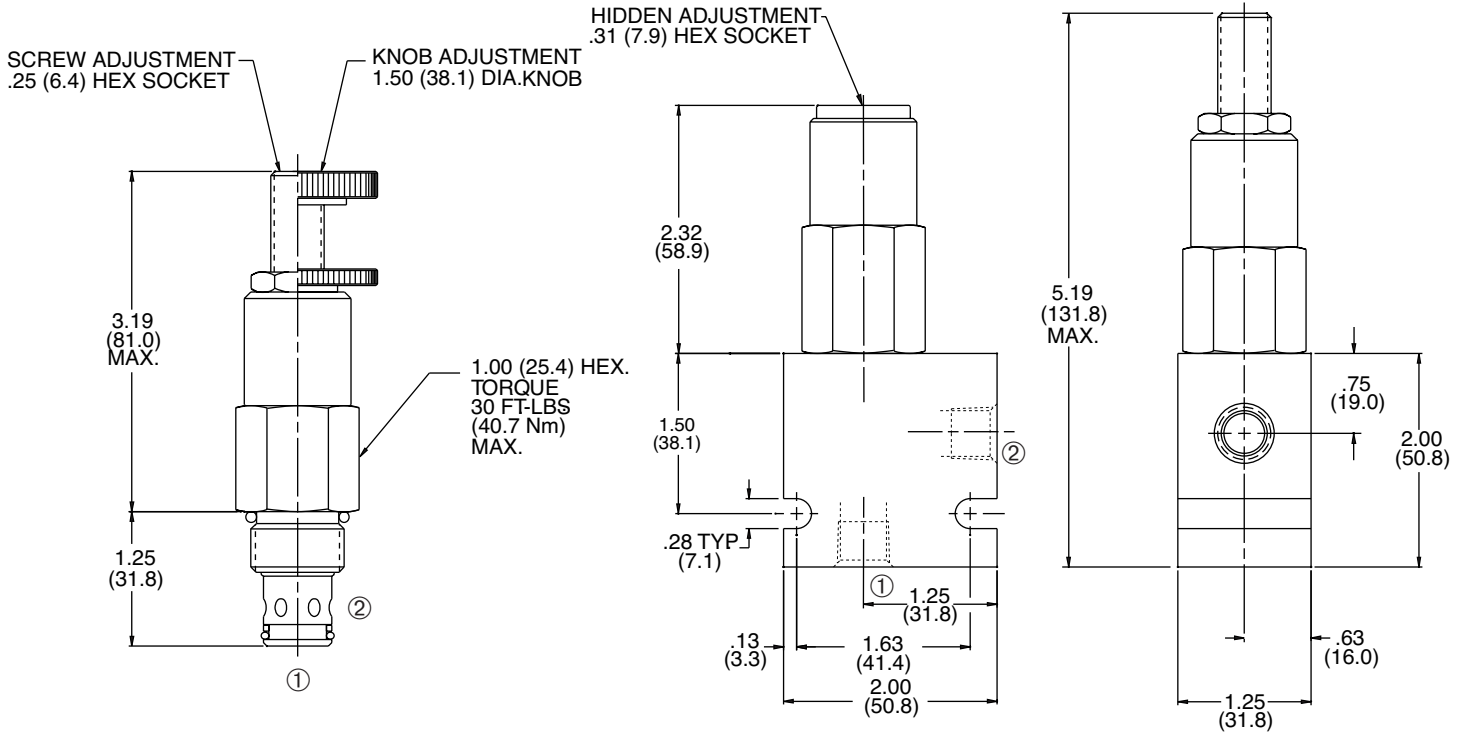
Cavity/Cavity Tool: 100-2, see page 11.10.2

In-Line Body Material: Anodized 6061T6 aluminum
alloy rated at 3000 PSI (207 Bar).

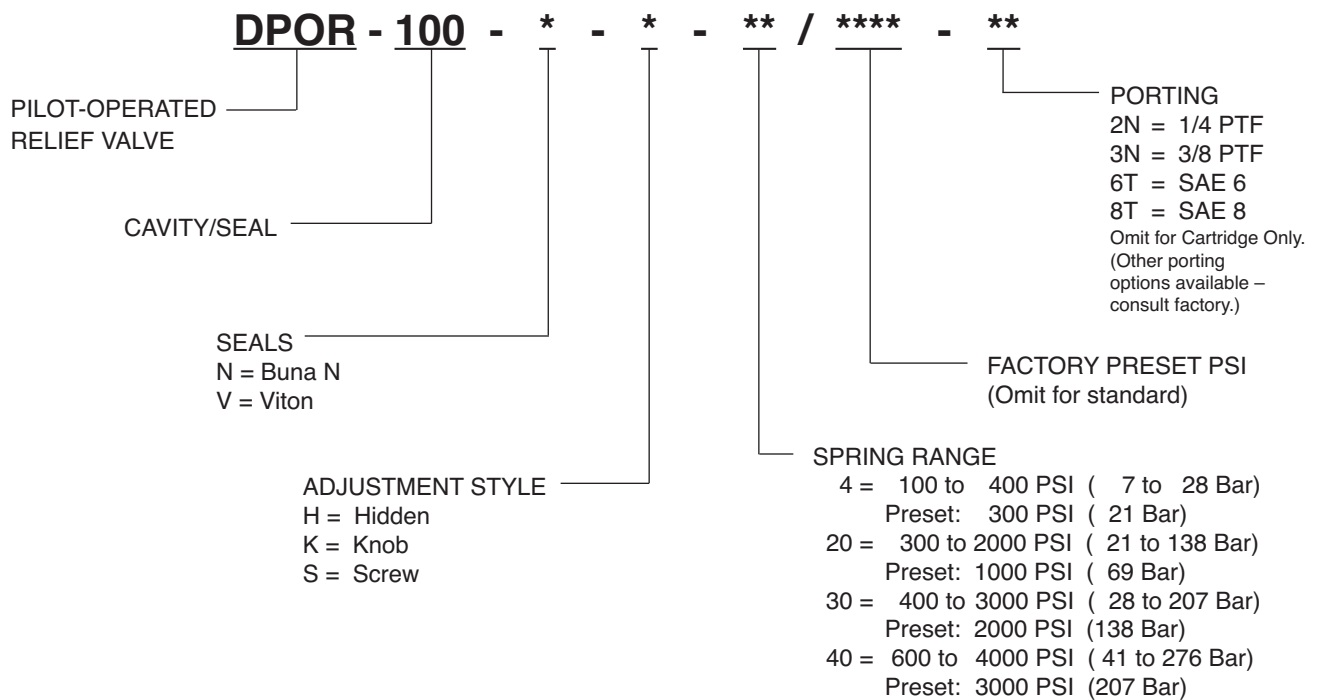
PRESSURE DROP VS. FLOW



INSTALLATION DIMENSIONS



HOW TO ORDER



SOLENOID
CHECK
MOTION CONTROL
FLOW CONTROL
RELIEF
PRESSURE CONTROL
SEQUENCE
SHUTTLE
DIRECTIONAL VALVES
ACCESSORIES
TECHNICAL DATA