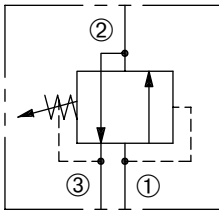


# DPS2-100

Adjustable, Internally-Piloted,  
Internally-Drained Sequence Valve

## SERIES 10

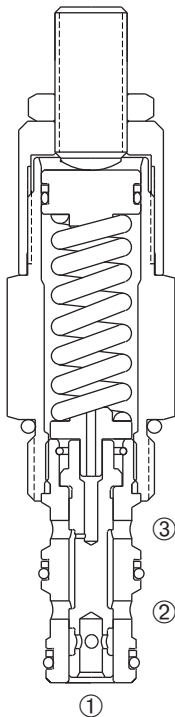


### DESCRIPTION

An adjustable, internally-piloted spool cartridge valve designed to direct oil to a circuit when a predetermined pressure has been reached.

### OPERATION

The DPS2-100 in the steady state allows flow from ② to ③ with ① blocked. When the preset pressure at ① is achieved, the spool shifts to allow flow from ① to ②.



### FEATURES and BENEFITS

- Variety of pressure ranges.
- Hardened precision spool and sleeve for long life.
- Hidden adjustment (tamper resistant) option.
- Aluminum knob and disc nut option.
- Adjustment may be locked in place.
- Industry common cavity.
- Compact size.

### SPECIFICATIONS

**Operating Pressure:** 3000 PSI (207 Bar)

**Flow:** See PRESSURE DROP VS. FLOW graph.

**Internal Leakage:** 5 in.<sup>3</sup>/min. (82 cc/min.) max. at 3000 PSI (207 Bar)

**Spring Range:** 400 to 2400 PSI (28 to 166 Bar)

Preset: 2000 PSI (138 Bar)

**Temperature:** -30°F to +250°F (-35°C to +120°C)

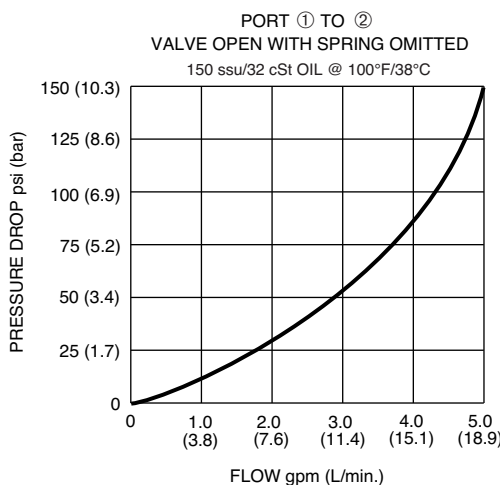
**Recommended Filtration:** ISO 20/18/14

**Fluids:** Mineral-based fluids. For other fluid compatibility, consult factory.

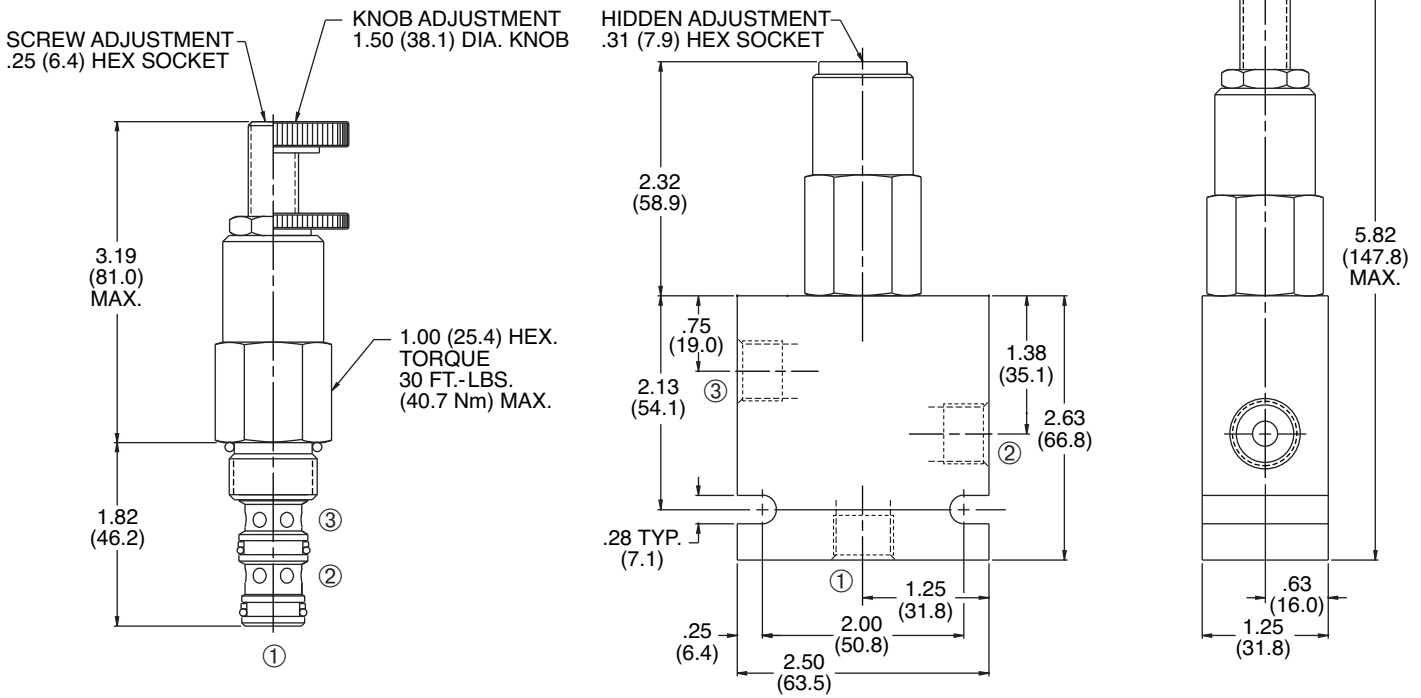
**Cavity/Cavity Tool:** 100-3, see page 11.10.3

**In-Line Body Material:** Anodized 6061T6 aluminum alloy rated at 3000 PSI (207 Bar).

### PRESSURE DROP VS. FLOW



## INSTALLATION DIMENSIONS



( ) Parentheses = Millimeters

## HOW TO ORDER

