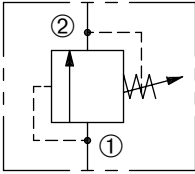


# DRV-080-\*-H

Tamper-Resistant,  
Direct-Acting Relief Valve

## SERIES 8

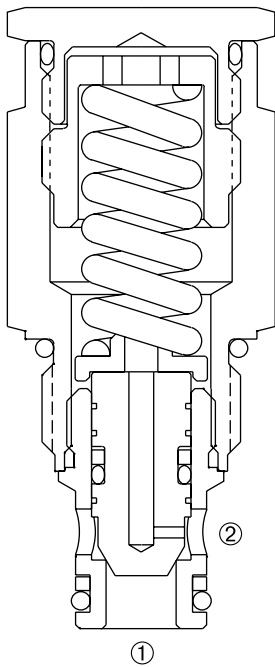


### DESCRIPTION

An adjustable, direct-acting poppet cartridge valve designed to limit pressure in hydraulic circuits.

### OPERATION

The DRV-080-\*-H prevents flow from ① to ② until the set crack pressure at ① is achieved. The poppet then unseats allowing flow from ① to ② protecting the circuit from over pressurization.



### FEATURES and BENEFITS

- Quiet operation.
- Rapid response to pressure surges.
- Hardened poppet and seat for long life.
- Hidden adjustment (tamper resistant).
- Industry common cavity.
- Compact size.

### SPECIFICATIONS

**Operating Pressure:** 3000 PSI (207 Bar)

**Flow:** See PRESSURE DROP VS. FLOW graph.  
Nominal Flow 10 GPM (37.9 L/min).

**Internal Leakage:** 20 drops/min. max. at reseal.

**Crack Pressure Defined:** Determined at .25 gpm (0.9 L/min.)

**Reseat Pressure:** Nominal 80% of crack pressure.

**Spring Range:** 50 to 3000 PSI (3 to 207 Bar)

Preset: 1500 PSI (103 Bar)

**Temperature:** -30°F to +250°F (-35°C to +120°C).

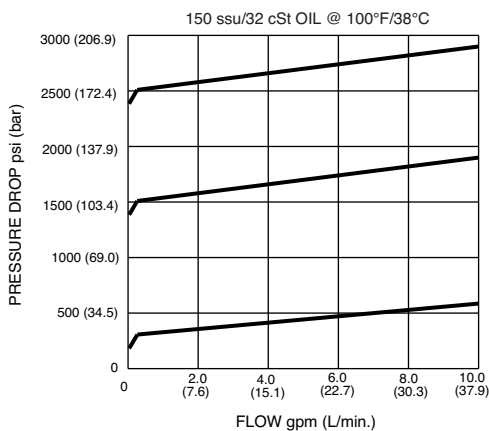
**Recommended Filtration:** ISO 20/18/14

**Fluids:** Mineral-based fluids. For other fluid compatibility, consult factory.

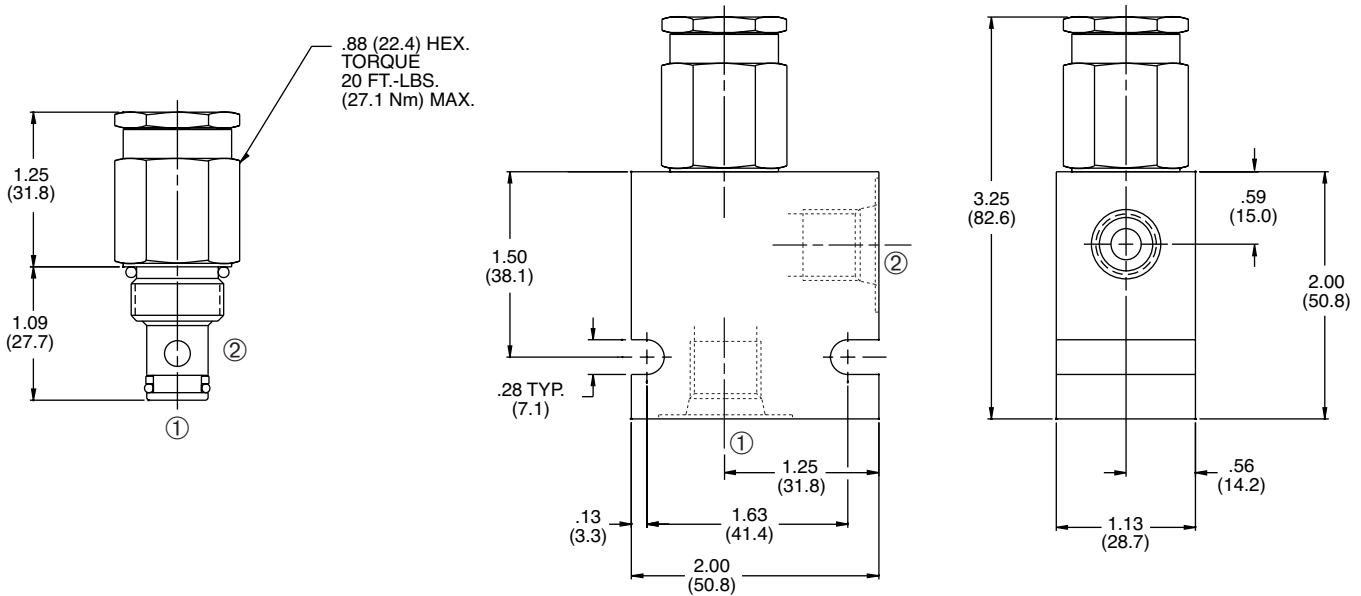
**Cavity/Cavity Tool:** 080-2, see page 11.08.2

**In-Line Body Material:** Anodized 6061T6 aluminum alloy rated at 3000 PSI (207 Bar).

### PRESSURE DROP VS. FLOW

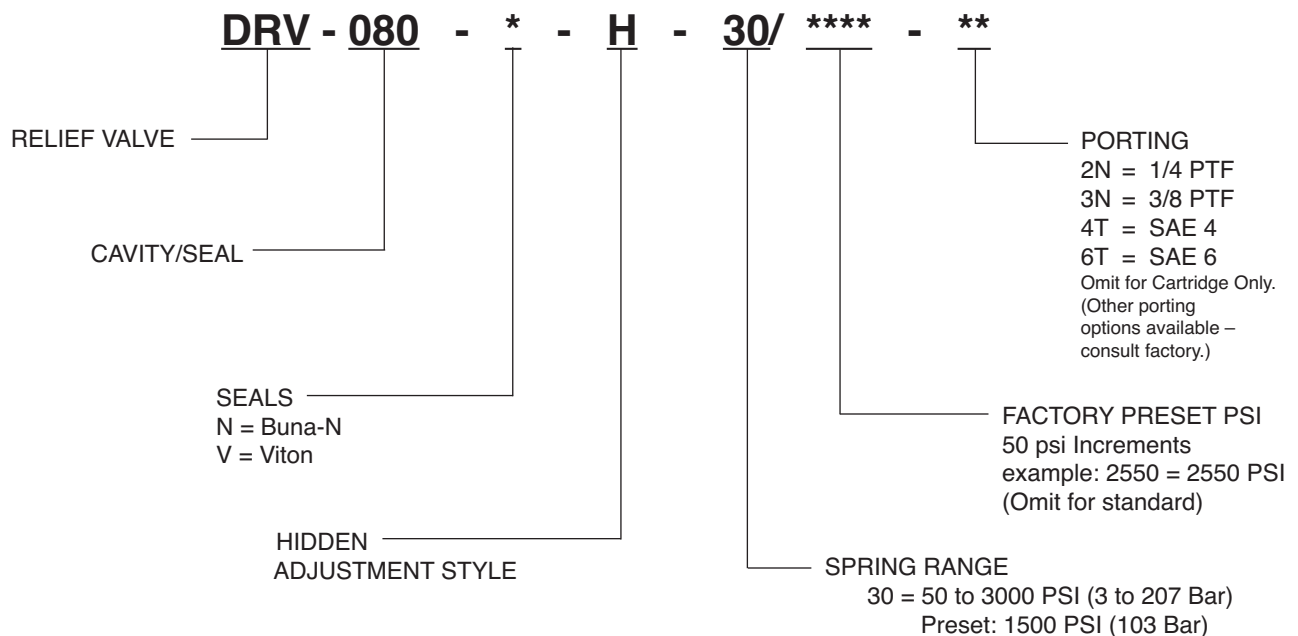


## INSTALLATION DIMENSIONS



( ) Parentheses = Millimeters

## HOW TO ORDER



SOLENOID  
CHECK  
MOTION CONTROL  
FLOW CONTROL  
RELIEF  
PRESSURE CONTROL  
SEQUENCE  
SHUTTLE  
DIRECTIONAL VALVES  
ACCESSORIES  
TECHNICAL DATA