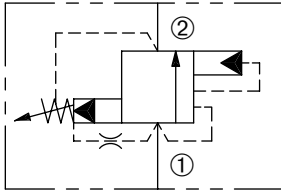


# DRVK-080

Adjustable, Pilot-Operated,  
Kick-Down Relief Valve

## SERIES 8



### DESCRIPTION

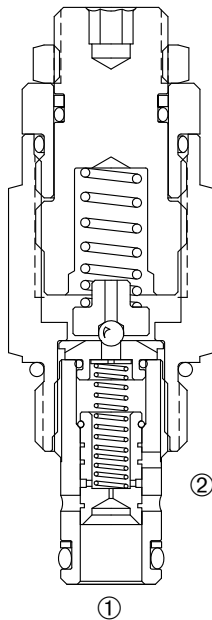
An adjustable, pilot-operated spool cartridge valve designed to allow flow to actuator circuits until a predetermined pressure is attained, then to discharge flow back to tank at a low pressure.

### OPERATION

Flow is blocked from ① to ② until system pressure exceeds the valve setting allowing flow through the pilot section to pass out of the vent port. As flow passes through the pilot section, the resulting differential pressure shifts the main spool to unload the system to a predetermined low pressure. When the system pressure is reduced below 50 psi (3.4 bar), the valve will reset itself and again block flow from port ① to ②.

Flow is blocked from port ② to ①.

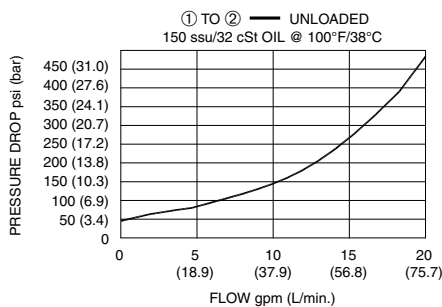
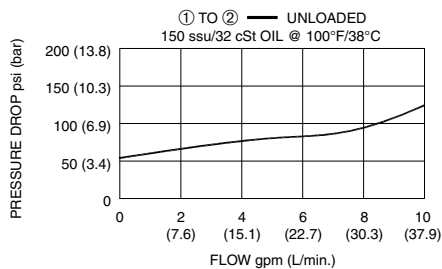
Pressure at port ② is added to valve setting



### FEATURES and BENEFITS

- Quiet operation.
- High accuracy of pilot operated design.
- Hardened parts for long life.
- Adjustment may be locked in place.
- Tamper resistant option.
- Adjustment prevents spring from going solid.
- Industry common cavity.
- Compact size.
- High flow capacity.

### PRESSURE DROP VS. FLOW



### SPECIFICATIONS

**Operating Pressure:** 4000 PSI (276 Bar)

**Flow:** See PRESSURE DROP VS. FLOW graph

**Internal Leakage:** 5 in.<sup>3</sup>/min (82 cc/min.) max. at 80% of crack pressure

**Crack Pressure Defined:** Determined at .25 GPM (1.0 L/min.)

**Reset Pressure:** When port ① pressure is below 50 PSI (3.4 Bar), valve will be reset to original pressure setting.

**Spring Range:** 300 to 4000 PSI (20 to 276 Bar)

Preset (See HOW TO ORDER)

**Temperature:** -30°F to +250°F (-35°C to +120°C).

**Recommended Filtration:** ISO 17/15/13

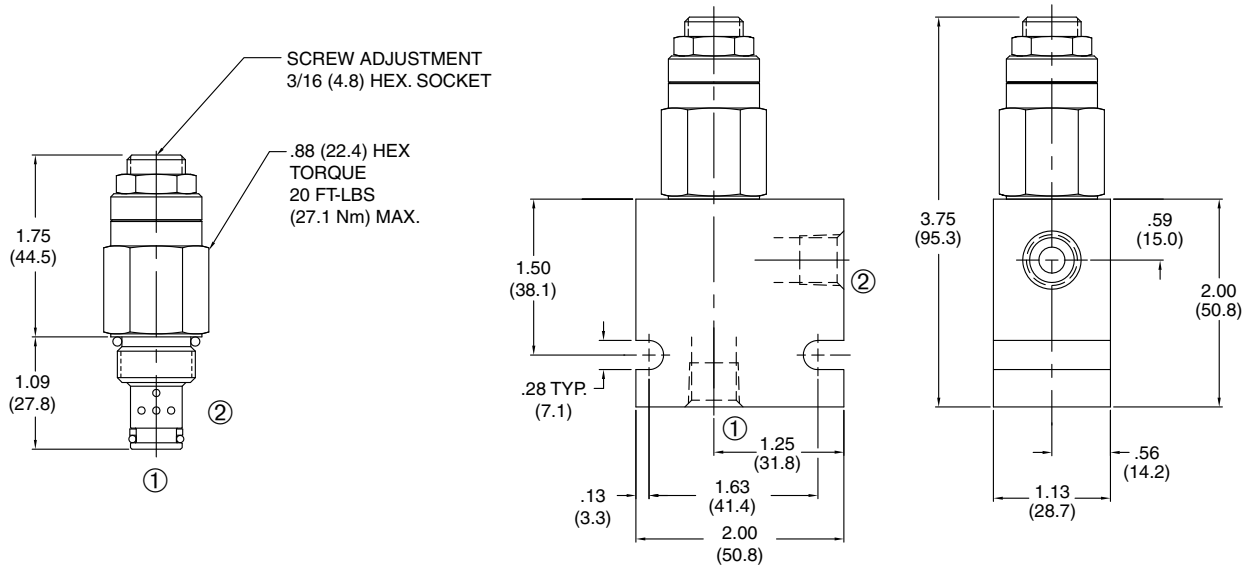
**Fluids:** Mineral-based fluids.

For other fluid compatibility, consult factory

**Cavity/Cavity Tool:** 080-2, see page 11.08.2

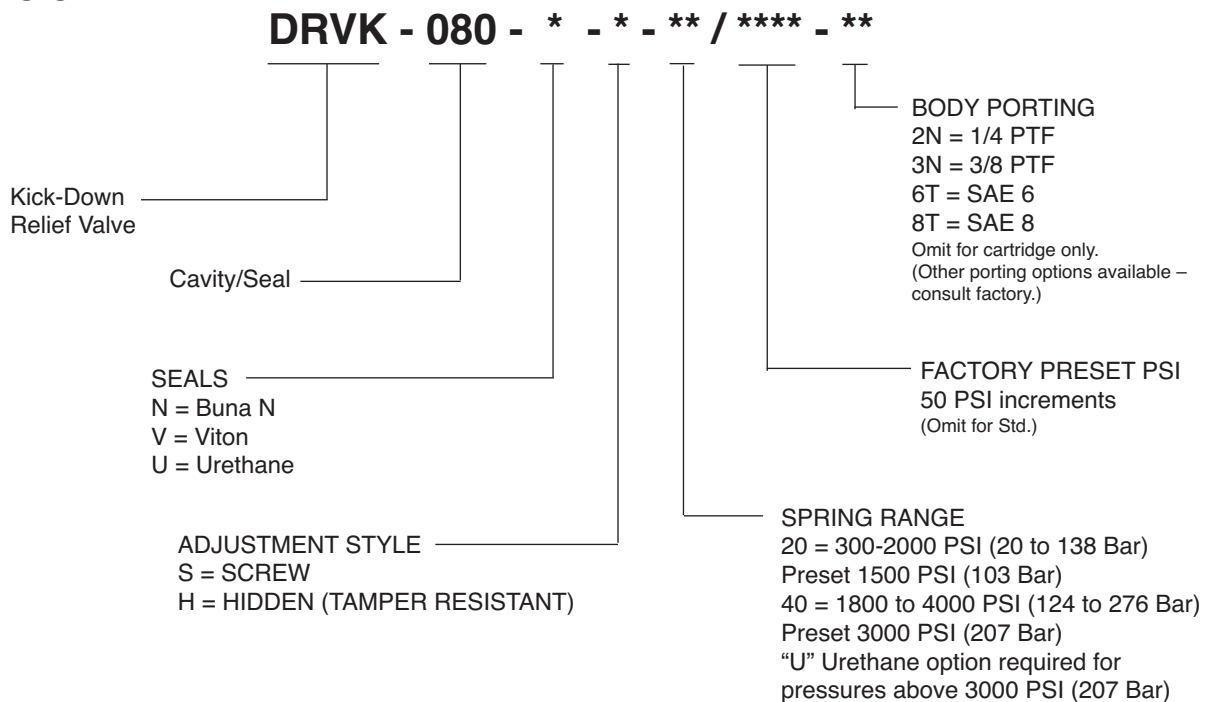
**In-Line Body Material:** Anodized 6061T6 aluminum alloy rated at 3000 PSI (207 Bar).

**INSTALLATION DIMENSIONS**



( ) Parentheses = Millimeters

**HOW TO ORDER**



SOLENOID  
CHECK  
MOTION CONTROL  
FLOW CONTROL  
RELIEF  
PRESSURE CONTROL  
SEQUENCE  
SHUTTLE  
DIRECTIONAL VALVES  
ACCESSORIES  
TECHNICAL DATA