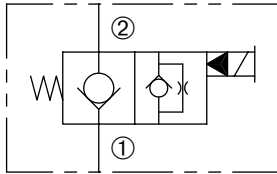


DSV-080-2NCP-*-M* (Pull-Type Manual Override)



Normally-Closed, Two-Way, Two-Position,
Pilot-Operated Solenoid Valve

SERIES 8



DESCRIPTION

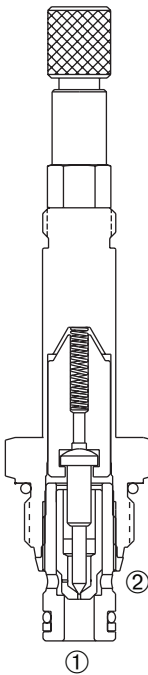
A cartridge valve designed with positive shut off to be used in load holding applications.

OPERATION

When de-energized, the DSV-080-2NCP-*-M* acts as a check valve, allowing flow from ① to ②, while blocking flow from ② to ①. When energized, the poppet lifts to open the ② to ① flow path.

Operation of Manual Override Option: To override, pull spring-loaded knob/adaptor on top of valve. Release to return to normal operation.

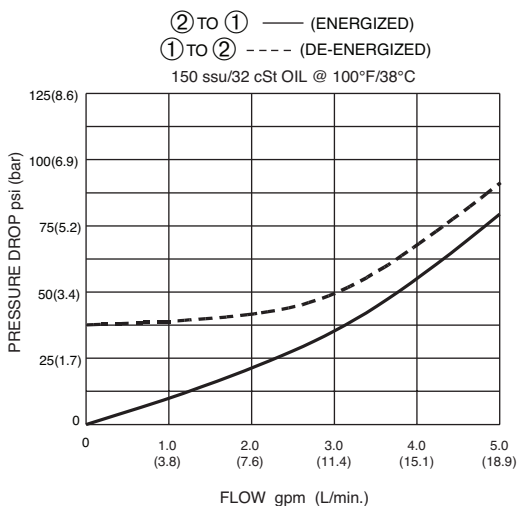
Note: Push, twist and release (detented in both positions) option available. See page 1.01.1



FEATURES and BENEFITS

- 4000 PSI (276 Bar) rating.
- Continuous-duty solenoid.
- Hardened poppet and plunger for long life and low leakage.
- Efficient wet-armature construction.
- Cartridges are voltage interchangeable.
- Optional coil voltages and terminations.
- Filter screen standard.
- Industry common cavity.
- Compact size.
- Low leak option available.

PRESSURE DROP VS. FLOW



SPECIFICATIONS

Operating Pressure: 4000 PSI (276 Bar)

Flow: See PRESSURE DROP VS. FLOW graph

Internal Leakage: 5 drops/min. max. at 4000 PSI (276 Bar)

Temperature: -30° F to +250° F (-35°C to +120° C)

Coil Rating: [Continuous from 85% to 110% of rated voltage.](#)

Current Draw: 12 VDC is 1.3 amps.

Minimum Pull-In Voltage: 85% of rated voltage at 4000 PSI (276 Bar)

Response Time: 80% of final change of state with 100% voltage supplied at 100% of nominal flow rating.

Pull-In: 12 VDC 16 m. sec. **Drop-Out:** 12 VDC 18 m. sec.

Recommended Filtration: Critical Application-ISO 17/15/13

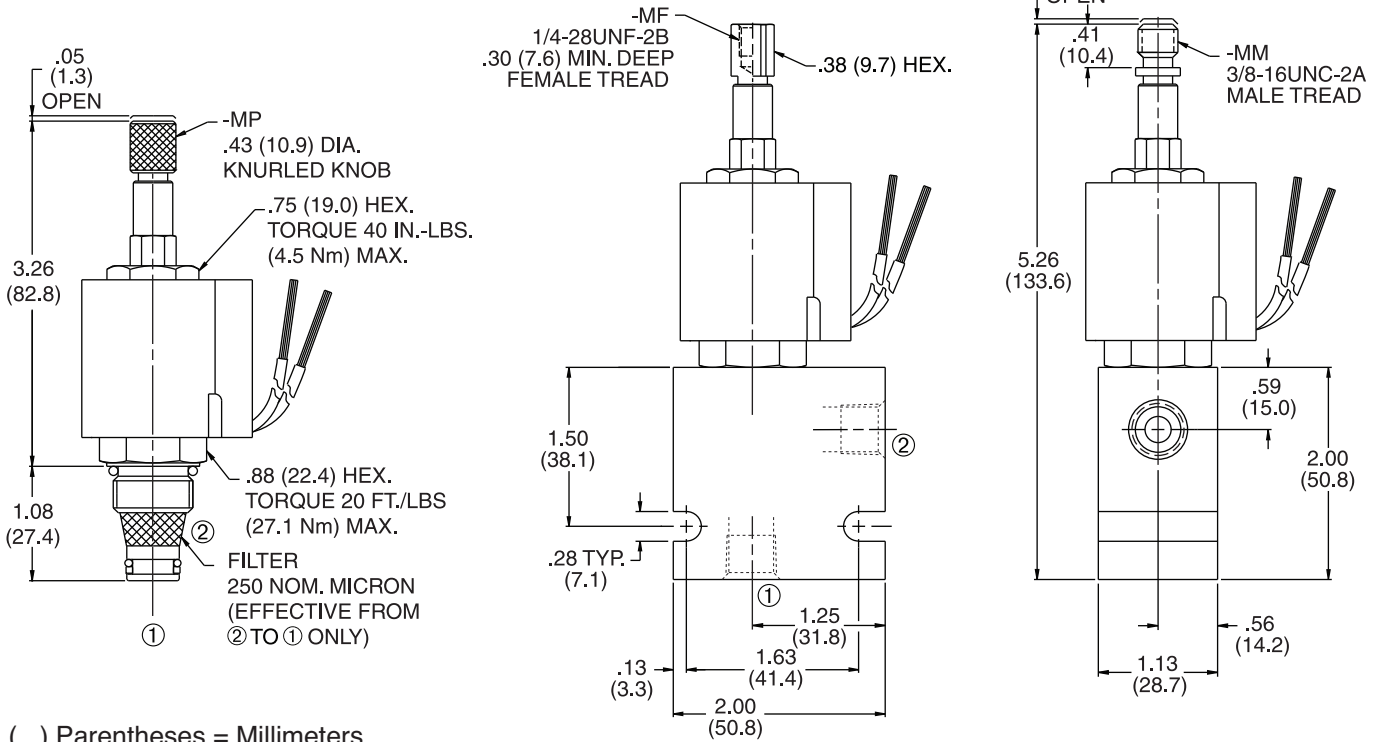
Non-Critical Application-ISO 20/18/14

Fluids: Mineral-based fluids. For other fluid compatibility consult factory.

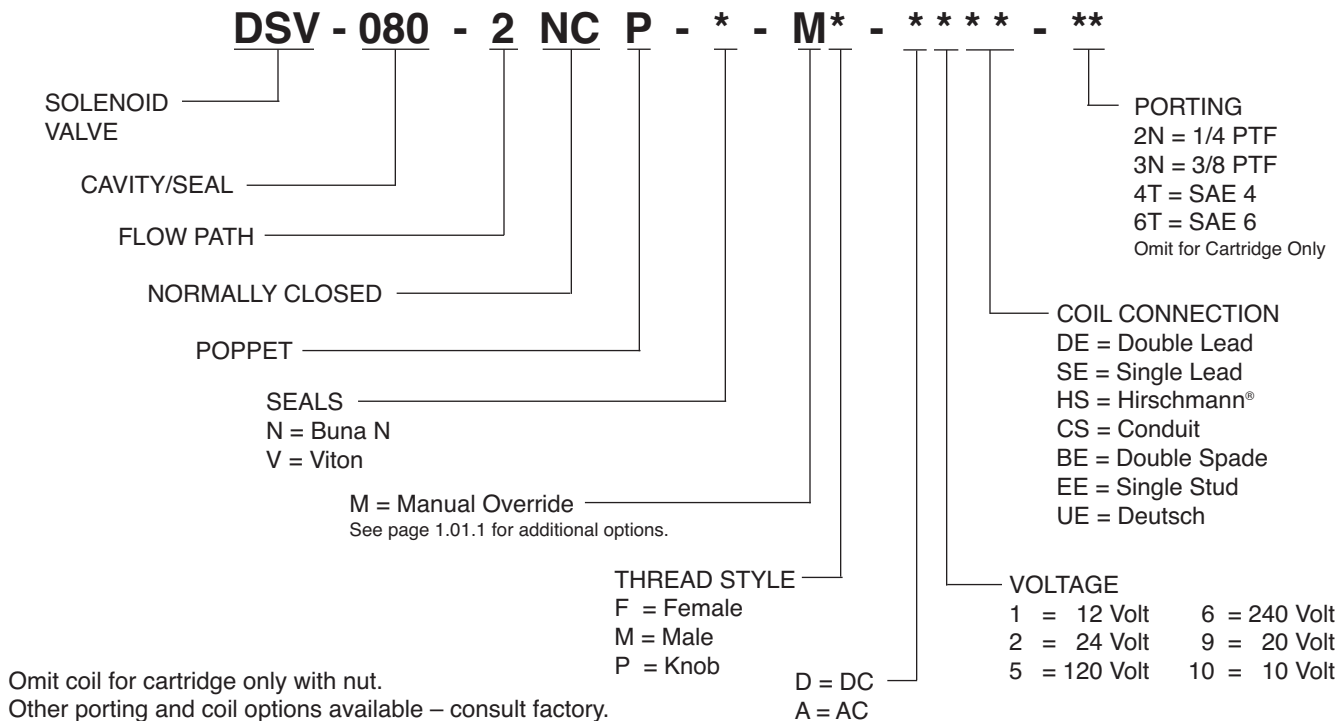
Cavity/Cavity Tool: [080-2, see page 11.08.2](#)

In-Line Body Material: Anodized 6061T6 aluminum
alloy rated at 3000 PSI (207 Bar).

INSTALLATION DIMENSIONS



HOW TO ORDER



SOLENOID
CHECK
MOTION CONTROL
FLOW CONTROL
RELIEF
PRESSURE CONTROL
SEQUENCE
SHUTTLE
DIRECTIONAL VALVES
ACCESSORIES
TECHNICAL DATA