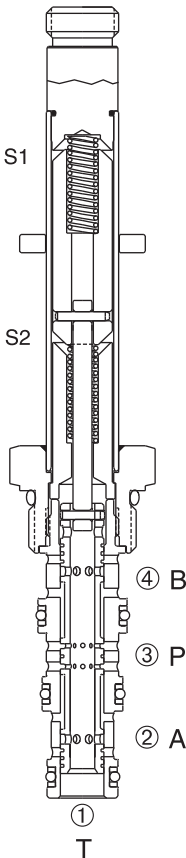
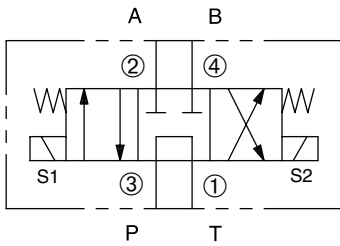


DSV-080-34T

Four-Way, Three-Position, Tandem Center
Spool-Type Solenoid Valve

SERIES 8



DESCRIPTION

A cartridge valve designed as a three position, four-way solenoid valve.

OPERATION

When de-energized, the valve allows flow between the ③ and ① ports with ports ② and ④ blocked. When the lower solenoid (S2) is energized, the valve allows flow between the ① and ② ports and the ③ and ④ ports. When the upper (S1) solenoid is energized, the valve allows flow between the ① and ④ ports and the ② and ③ ports.

Operation of Manual Override Option: To override, pull the knurled knob to activate the coil “S1” function, or push the knurled knob to activate the coil “S2” function. Release the knurled knob to return the center position.

FEATURES and BENEFITS

- Continuous-duty solenoid.
- Hardened precision spool and sleeve for long life.
- Efficient wet-armature construction.
- Cartridges are voltage interchangeable.
- Optional coil voltages and terminations.
- Industry common cavity.
- Compact size.

SPECIFICATIONS

Operating Pressure: 3000 PSI (207 Bar)

Flow: See PRESSURE DROP VS. FLOW CURVE.

Nominal flow 3 gpm (11.4 L/min.)

Internal Leakage: (Per land) 10 cu in./min. max. (164 cc/min.)
at 3000 PSI (207 Bar)

Temperature: -30°F to +250°F (-35°C to +120°C)

Coil Rating: [Continuous from 85% to 110% of rated voltage.](#)

Current Draw: 12 VDC is 1.3 amps.

Minimum Pull-In Voltage: 85% of rated voltage at 3000 PSI (207 Bar)

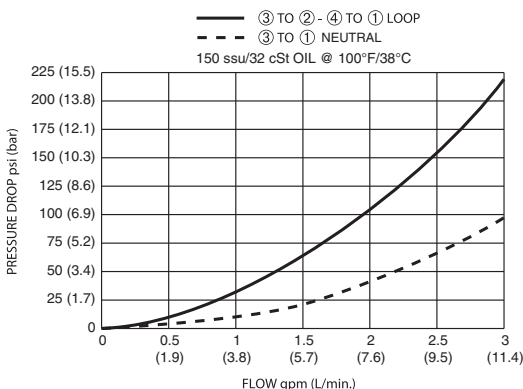
Recommended Filtration: ISO 17/15/13

Fluids: Mineral-based fluids. For other fluid compatibility, consult factory.

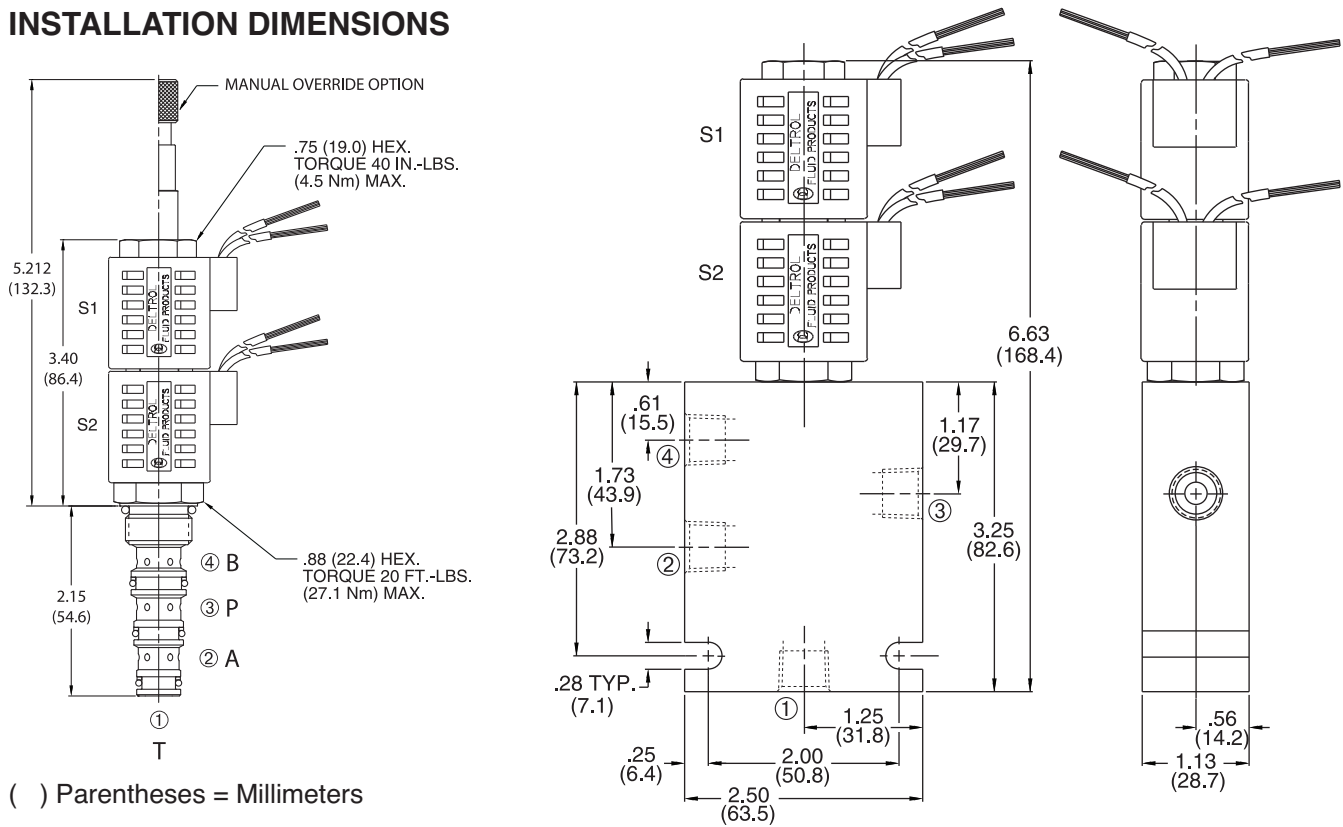
Cavity/Cavity Tool: [080-4, see page 11.08.4](#)

In-Line Body Material: Anodized 6061T6 aluminum
alloy rated at 3000 PSI (207 Bar)

PRESSURE DROP VS. FLOW



INSTALLATION DIMENSIONS



HOW TO ORDER

