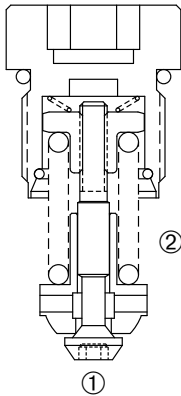
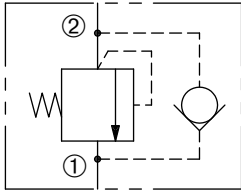


# RV-060

Relief Valve,  
Anti-Cavitation Check

## SERIES 060



### DESCRIPTION

A cartridge valve designed to combine a shock relief valve, (direct acting) and anti-cavitation function through the check valve.

### OPERATION

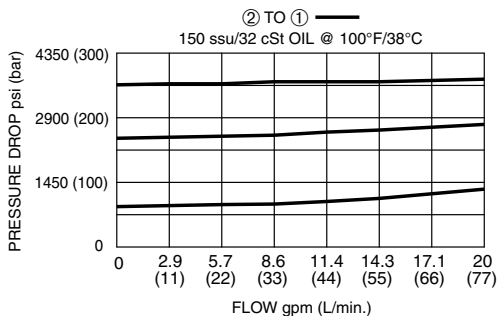
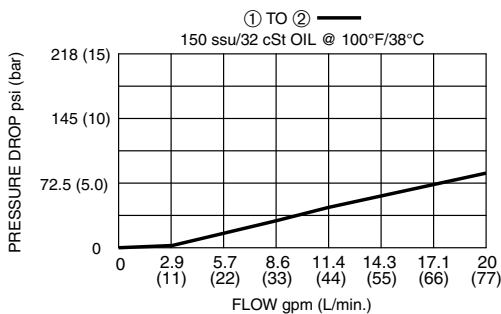
The RV-060 prevents flow from ② to ① until the set crack pressure at ② is achieved. The poppet then unseats allowing flow from ② to ①, protecting the circuit from over pressurization.

The RV-060 allows free flow from ① to ②. As pressure at ① exceeds pressure at ②, the valve unseats from the cavity allowing flow from ① to ②. This provides anti-cavitation function through the check valve.

### FEATURES and BENEFITS

- Rapid response to pressure surges.
- Anticavitation function through the check valve.
- Hardened precision poppet and seat for long life.
- Fast opening and closing.
- Low hysteresis.
- Compact size.

### PRESSURE DROP VS. FLOW



### SPECIFICATIONS

**Operating Pressure:** 5000 PSI (345 Bar)

**Max. Flow:** 20 gpm (77 l/min)

**Internal Leakage:** 1.0 cc/min at 80% set

**Crack Pressure Defined:** Determined at .25 gpm (0.9 L/min)

**Reseat Pressure:** Nominal 80% of crack pressure

**Temperature:** -30°F to +220°F (-35°C to +104°C)

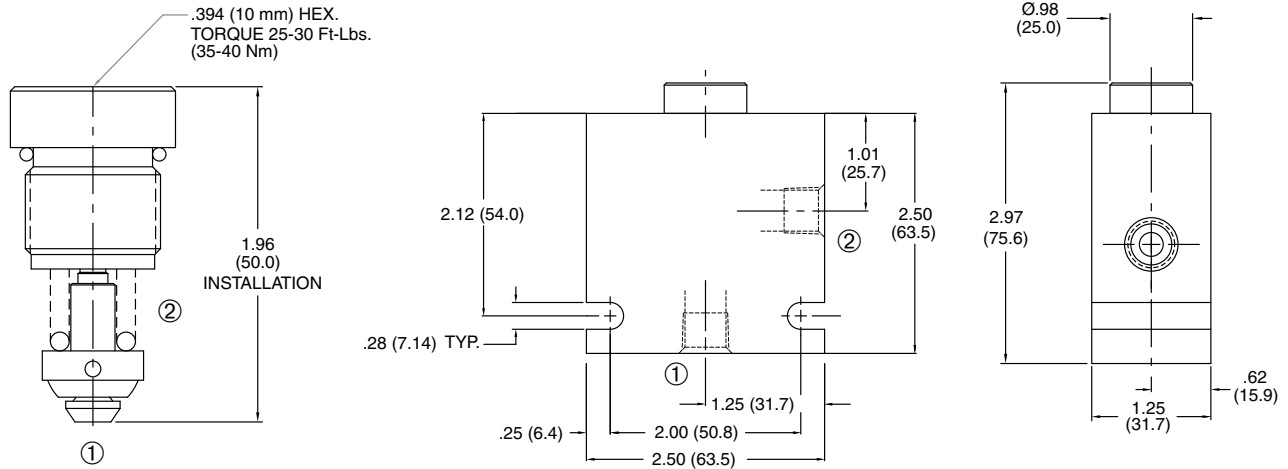
**Recommended Filtration:** ISO 20/18/14

**Fluids:** Mineral-based fluids.

**Cavity/Cavity Tool:** R06-2, see page 11.26.2

**In-Line Body Material:** Anodized 6061T6 aluminum alloy rated at 3000 PSI (207 Bar).

**INSTALLATION DIMENSIONS**



( ) Parentheses = Millimeters

**HOW TO ORDER**

