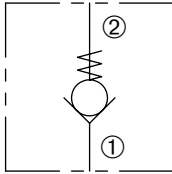


ZCO-62

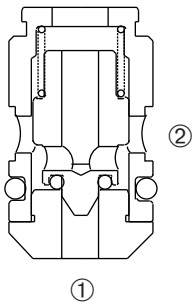
Zero Leak, Direct-Acting,
Poppet-Type Check Valve

ZERO PROFILE



DESCRIPTION

A cartridge valve designed to allow free flow in one direction, while preventing flow in the opposite direction. This valve is commonly used as a load-holding or blocking valve.



OPERATION

Pressure at ① overcomes the spring-bias poppet and allows free flow to ②. Flow in the opposite direction, from ② to ①, is blocked by the poppet.

FEATURES and BENEFITS

- Slip in style.
- Zero leak.
- Compact size.

SPECIFICATIONS

Operating Pressure: 1500 PSI (103 Bar)

Flow: See PRESSURE DROP VS. FLOW graph.
Nominal Flow 2 GPM (7.6 L/min).

Internal Leakage: 0 drops/min. max. at 1500PSI (103 Bar)

Crack Pressure: 1 - 2 PSI (0.67-0.14 Bar)

Temperature: -30°F to +250°F (-35°C to +120°C)

Recommended Filtration: Critical Application – ISO 17/15/13
Non-Critical Application – ISO 20/18/14

Fluids: Mineral-based fluids.

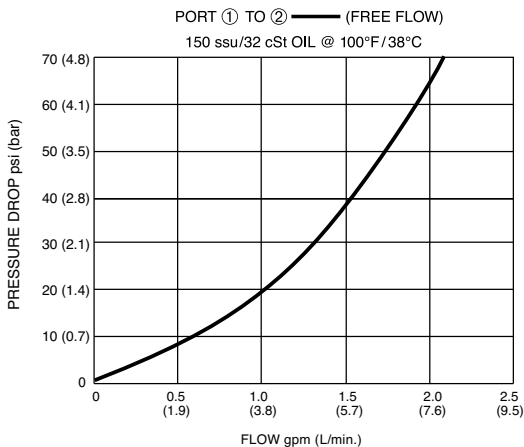
For other fluid compatibility, consult factory.

Cavity/Cavity Tool: [ZP62, see page 11.06.2](#)

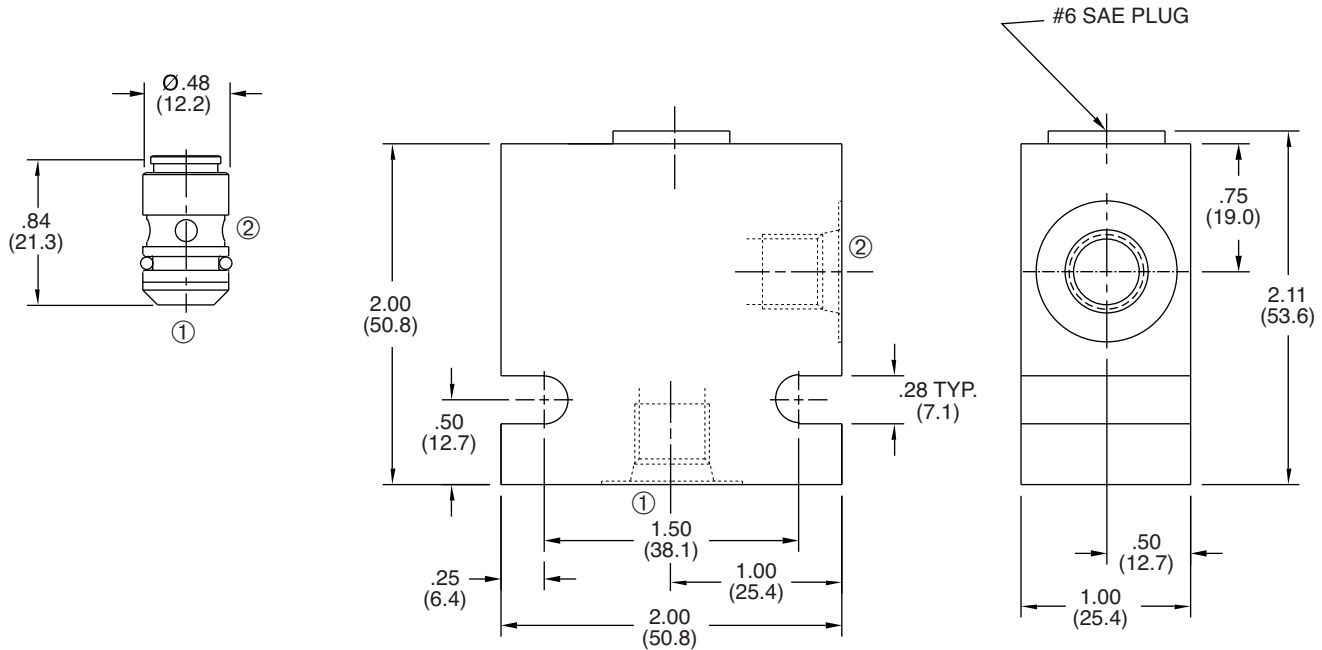
Installation/Removal Tool: Consult factory

In-Line Body Material: Anodized 6061T6 aluminum
alloy rated at 3000 PSI (207 Bar).

PRESSURE DROP VS. FLOW



INSTALLATION DIMENSIONS



() Parentheses = Millimeters

HOW TO ORDER

