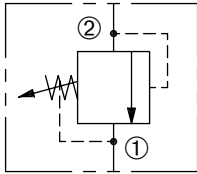


# ZDRV-63

Adjustable, Direct-Acting,  
Differential Area Relief Valve

## ZERO PROFILE

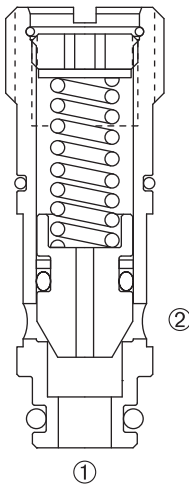


### DESCRIPTION

An adjustable, direct-acting poppet cartridge valve designed to limit pressure in hydraulic circuits.

### OPERATION

The ZDRV-63 prevents flow from ② to ① until the set crack pressure at ② is achieved. The poppet then unseats allowing flow from ② to ① protecting the circuit from over pressurization.



### FEATURES and BENEFITS

- Rapid response to pressure surges.
- Hardened poppet and seat for long life.
- Compact size.

### SPECIFICATIONS

**Operating Pressure:** 3000 PSI (207 Bar)

**Flow:** Nominal flow 5 gpm (18.9 L/min.)

**Internal Leakage:** 20 drops/min. at 80% set.

**Crack Pressure Defined:** Determined at .25 gpm (0.9 L/min.)

**Reseat Pressure:** Nominal 80% of crack pressure.

**Spring Range:** 100 to 600 PSI (7 to 41 Bar)

Preset: 300 PSI (21 Bar)

500 to 1000 PSI (34 to 69 Bar)

Preset: 750 PSI (52 Bar)

900 to 2000 PSI (62 to 138 Bar)

Preset: 1500 PSI (103 Bar)

1900 to 3000 PSI (131 to 207 Bar)

Preset: 2000 PSI (138 Bar)

**Temperature:** -30°F to +220°F (-35°C to +104°C).

**Recommended Filtration:** ISO 20/18/14

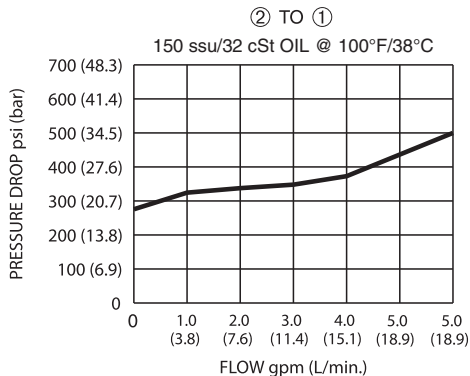
**Fluids:** Mineral-based fluids. For other fluid compatibility, consult factory.

**Cavity/Cavity Tool:** ZP63, see page 11.06.3

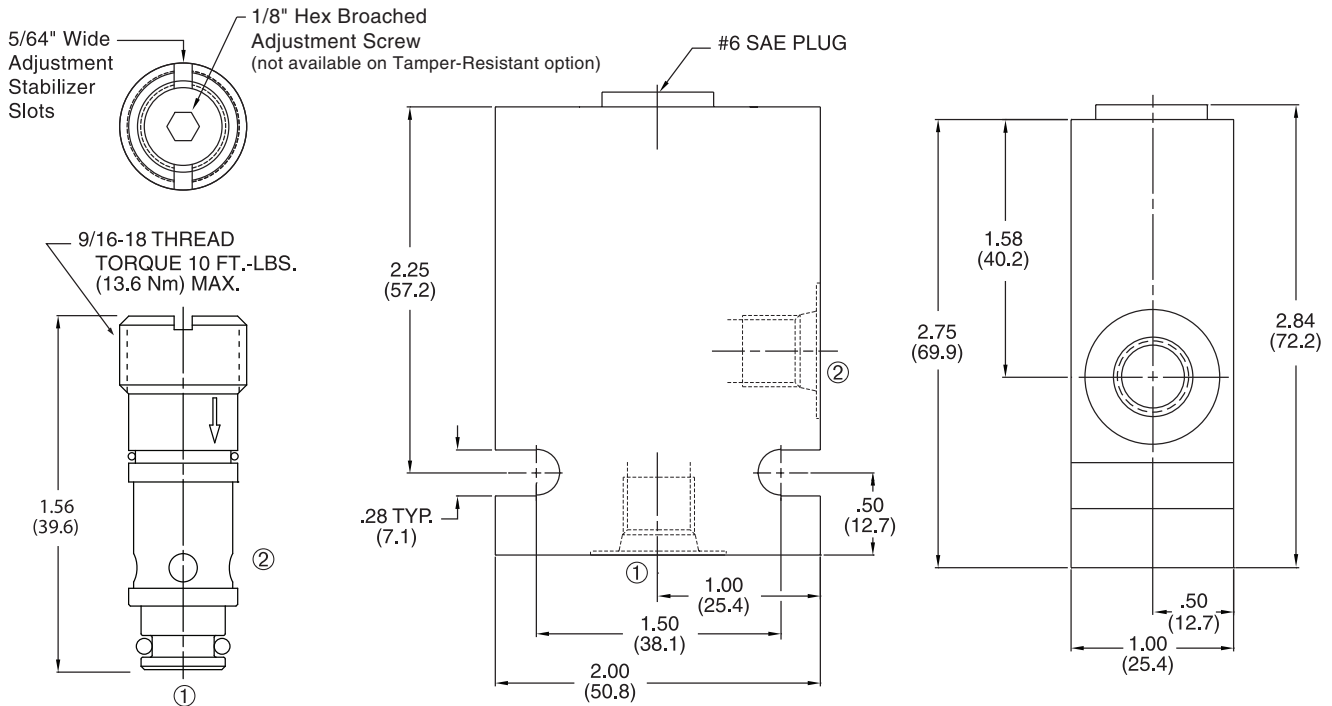
**Installation/Removal Tool:** Consult factory.

**In-Line Body Material:** Anodized 6061T6 aluminum alloy rated at 3000 PSI (207 Bar).

### PRESSURE DROP VS. FLOW



## INSTALLATION DIMENSIONS



( ) Parentheses = Millimeters

## HOW TO ORDER

