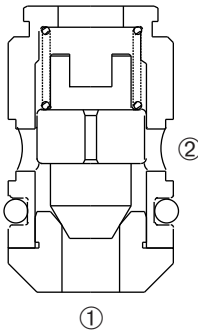
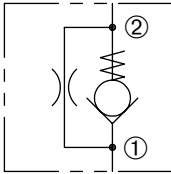


ZFC-62

Flow Control, Check Valve
With Fixed Orifice

ZERO PROFILE



DESCRIPTION

A cartridge valve designed to allow restricted flow in one direction with free flow in the opposite direction.

OPERATION

Pressure at ① overcomes the spring-bias poppet and allows free flow to ②. Flow in the opposite direction, from ② to ①, is metered by an orifice.

FEATURES and BENEFITS

- Slip in style.
- Compact size.

SPECIFICATIONS

Operating Pressure: 3000 PSI (207 Bar)

Flow: See PRESSURE DROP VS. FLOW graph.

Bias-Spring: 5 PSI (0.3 Bar)

Temperature: -30°F to +250°F (-35°C to +120°C)

Recommended Filtration: Critical Application – ISO 17/15/13

Non-Critical Application – ISO 20/18/14

Fluids: Mineral-based fluids.

For other fluid compatibility, consult factory.

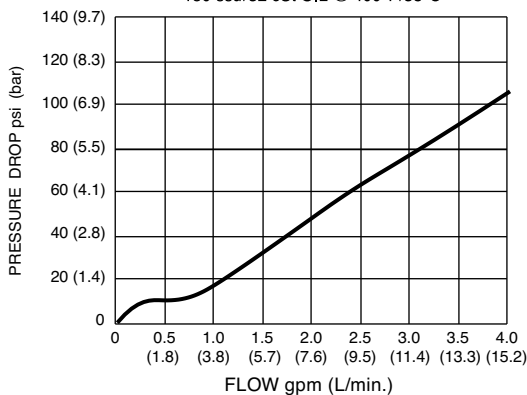
Installation/Removal Tool: Consult factory.

In-Line Body Material: Anodized 6061T6 aluminum alloy rated at 3000 PSI (207 Bar).

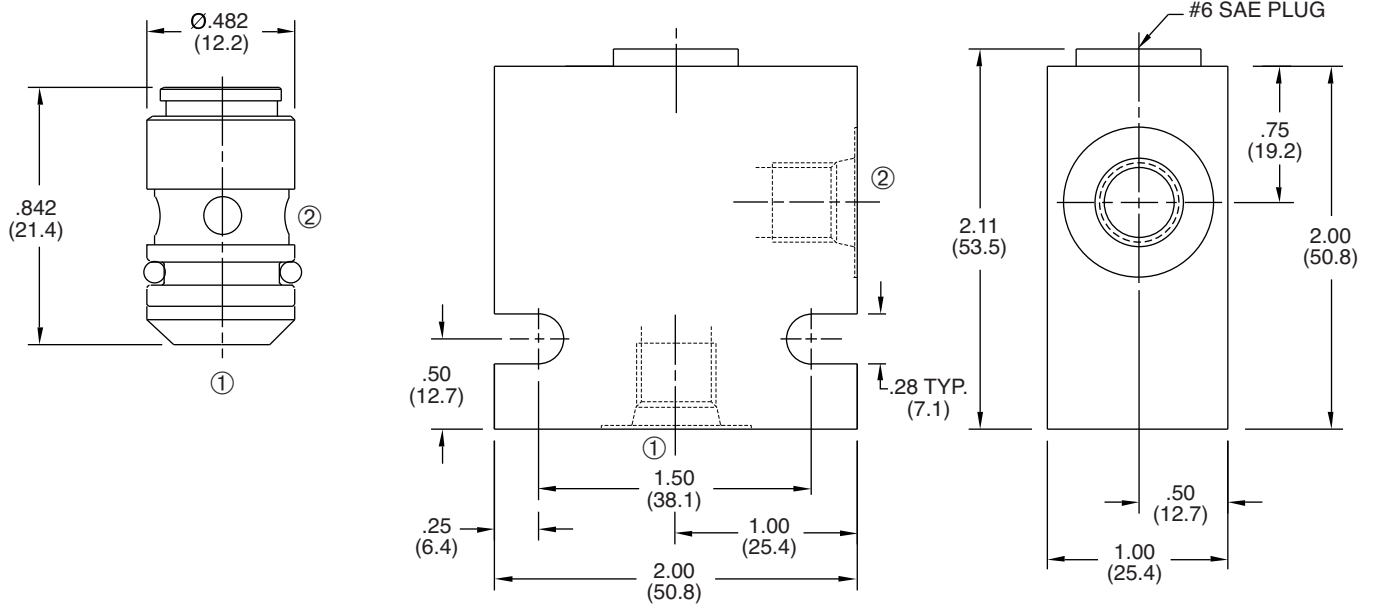
Cavity: [ZP62, see page 11.06.2](#)

PRESSURE DROP VS. FLOW

PORT ① TO ② FULL - (FREE FLOW)
150 ssu/32 cSt OIL @ 100°F/38°C



INSTALLATION DIMENSIONS



() Parentheses = Millimeters

HOW TO ORDER

