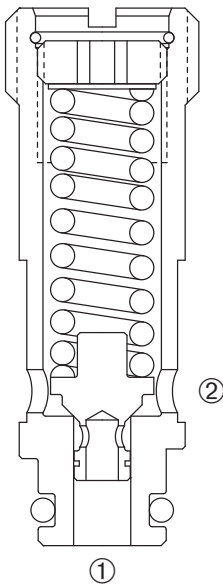
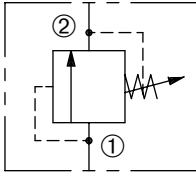


ZRV-63

Adjustable,
Direct-Acting Relief Valve

ZERO PROFILE



DESCRIPTION

An adjustable, direct-acting poppet cartridge valve designed to limit pressure in hydraulic circuits.

OPERATION

The ZRV-63 prevents flow from ① to ② until the set crack pressure at ① is achieved. The poppet then unseats allowing flow from ① to ② protecting the circuit from over pressurization.

FEATURES and BENEFITS

- Rapid response to pressure surges.
- Hardened poppet and seat for long life.
- Compact size.

SPECIFICATIONS

Operating Pressure: 3000 PSI (207 Bar)

Flow: See PRESSURE DROP VS. FLOW graph.

Nominal flow 2 gpm (11.4 L/min.)

Internal Leakage: 20 drops/min. at 80% set.

Crack Pressure Defined: Determined at .25 gpm (0.9 L/min.)

Reseat Pressure: Nominal 80% of crack pressure.

Spring Range: 100 to 1000 PSI (7 to 69 Bar)

Preset: 500 PSI (34 Bar)

900 to 2000 PSI (62 to 138 Bar)

Preset: 1500 PSI (103 Bar)

1900 to 3000 PSI (131 to 207 Bar)

Preset: 2000 PSI (138 Bar)

Temperature: -30°F to +220°F (-35°C to +104°C).

Recommended Filtration: ISO 20/18/14

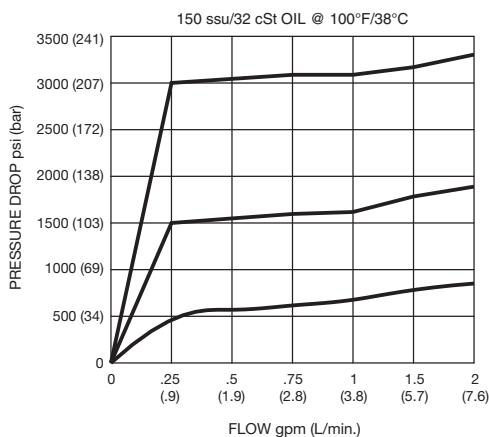
Fluids: Mineral-based fluids. For other fluid compatibility, consult factory.

Cavity/Cavity Tool: ZP63, see page 11.06.3

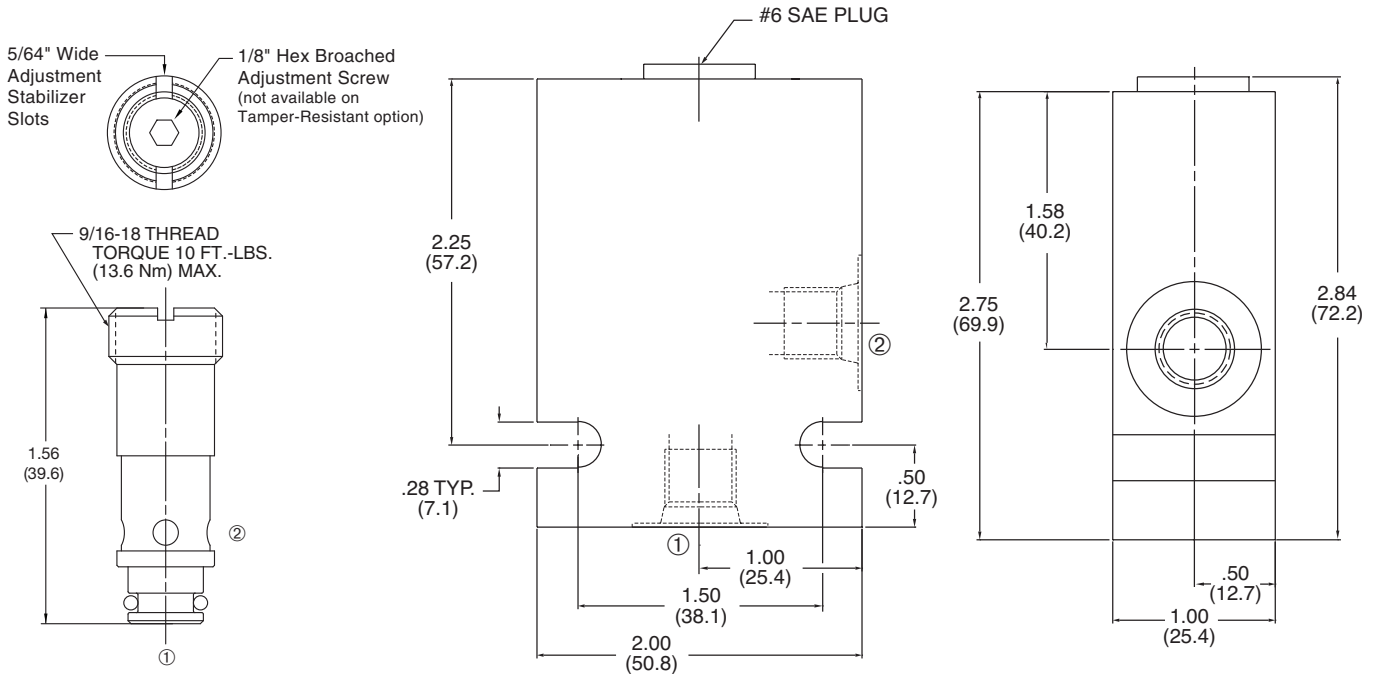
Installation/Removal Tool: Consult factory.

In-Line Body Material: Anodized 6061T6 aluminum alloy rated at 3000 PSI (207 Bar).

PRESSURE DROP VS. FLOW



INSTALLATION DIMENSIONS



() Parentheses = Millimeters

HOW TO ORDER

