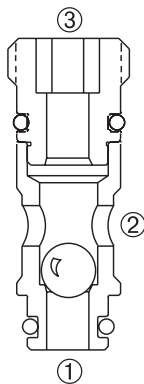
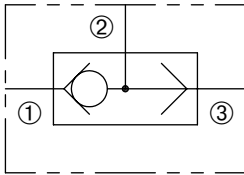


ZSHB-63

Ball-Type
Shuttle Valve

ZERO PROFILE



DESCRIPTION

A cartridge valve designed to direct flow from either of the two inlet ports to a common outlet port.

OPERATION

The ZSHB-63 allows the check ball to move away from inlet port ① or ③ with the greatest differential pressure and seat against the other inlet port having the least differential pressure. This provides a flow path to outlet port ②.

FEATURES and BENEFITS

- Excellent response to pressure changes.
- Chrome alloy ball for long life.
- Compact size.

SPECIFICATIONS

Operating Pressure: 3000 PSI (207 Bar)

Flow: See PRESSURE DROP VS. FLOW graph.
Nominal Flow 4 GPM (15.1 L/min).

Internal Leakage: 5 drops/min. max. at 3000 PSI (207 Bar)

Temperature: -30°F to +250°F (-35°C to +120°C)

Recommended Filtration: Critical Application – ISO 17/15/13

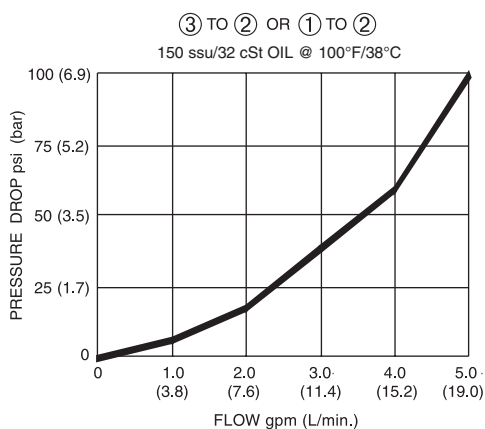
Non-Critical Application – ISO 20/18/14

Fluids: Mineral-based fluids. For other fluid compatibility, consult factory.

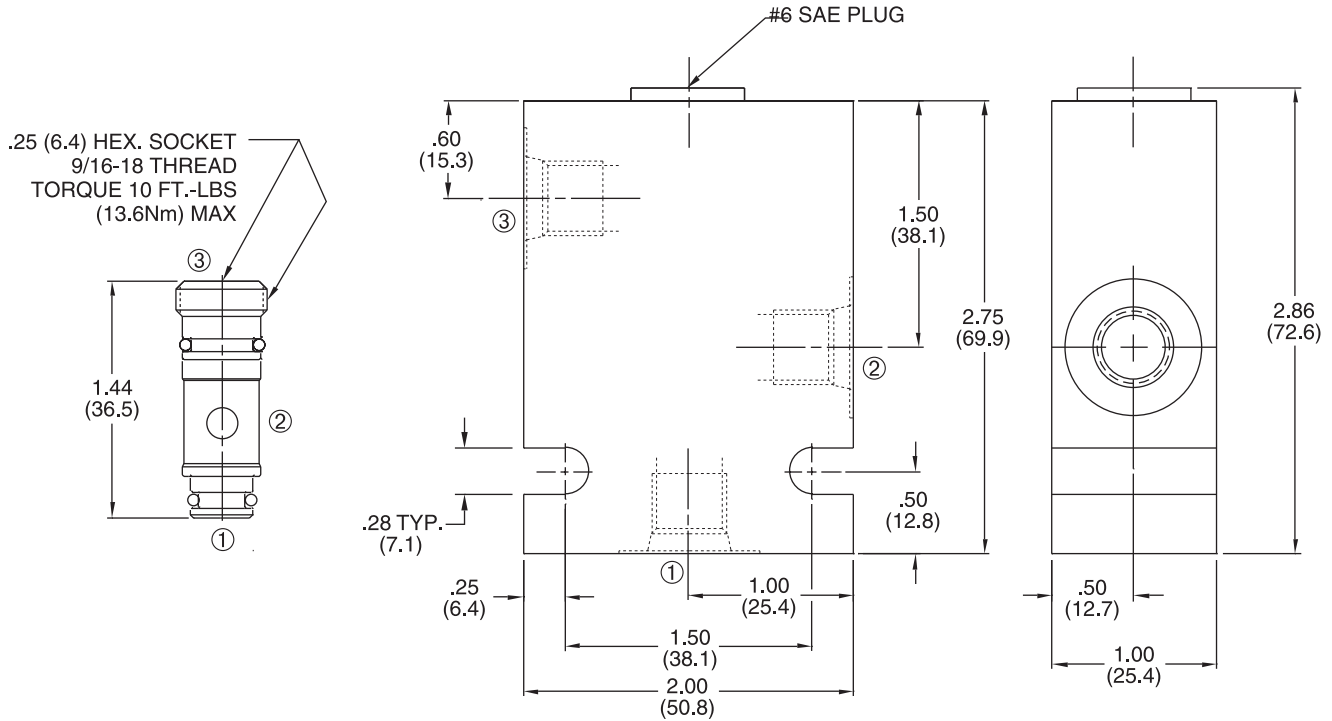
Cavity/Cavity Tool: ZP63, see page 11.06.3

In-Line Body Material: Anodized 6061T6 aluminum alloy rated at 3000 PSI (207 Bar).

PRESSURE DROP VS. FLOW

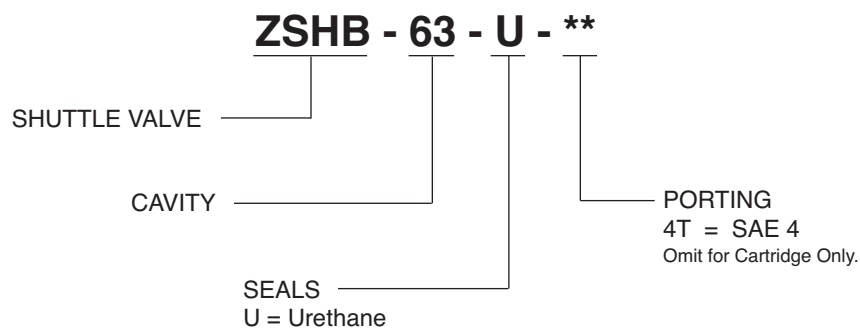


INSTALLATION DIMENSIONS



() Parentheses = Millimeters

HOW TO ORDER



SOLENOID

CHECK

MOTION CONTROL

FLOW CONTROL

RELIEF

PRESSURE CONTROL

SEQUENCE

SHUTTLE

DIRECTIONAL VALVES

ACCESSORIES

TECHNICAL DATA