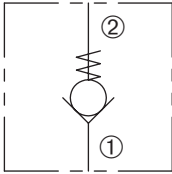


DCV-080-PB

Direct-Acting, Ball-Type
Check Valve

SERIES 8



DESCRIPTION

A cartridge valve designed to allow free flow in one direction, while preventing flow in the opposite direction. This valve is commonly used as a load-holding or blocking valve.

OPERATION

Pressure at ① overcomes the spring-bias ball and allows free flow to ②. Flow in the opposite direction, from ② to ①, is blocked by the ball.



FEATURES and BENEFITS

- Guide ball assembly
- Torlon® ball for positive shut-off.
- Low leak.
- Industry common cavity.

SPECIFICATIONS

Operating Pressure: 3000 psi (207 bar)

Flow: See PRESSURE DROP VS. FLOW graph.

Nominal Flow 5 gpm (18.9 lpm)

Internal Leakage: Less than 2 drops/min max. at 3000 psi (207 bar)

Crack Pressure: 2 psi (0.1 bar)

5 psi (0.3 bar)

10 psi (0.7 bar)

30 psi (2.1 bar)

60 psi (4.1 bar)

100 psi (6.9 bar)

Temperature: -30°F to +220°F (-35°C to +104°C)

Recommended Filtration: Critical Application – ISO 17/15/13

Non-Critical Application – ISO 20/18/14

Fluids: Mineral-based fluids.

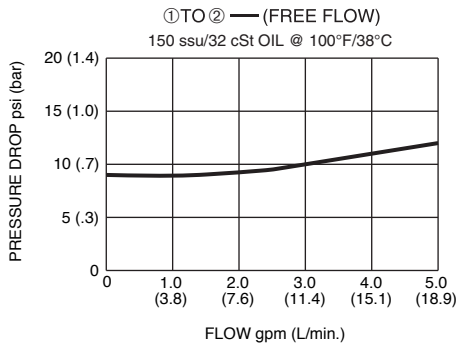
For other fluid compatibility, consult factory.

Cavity/Cavity Tool: 080-2, see page 11.08.2

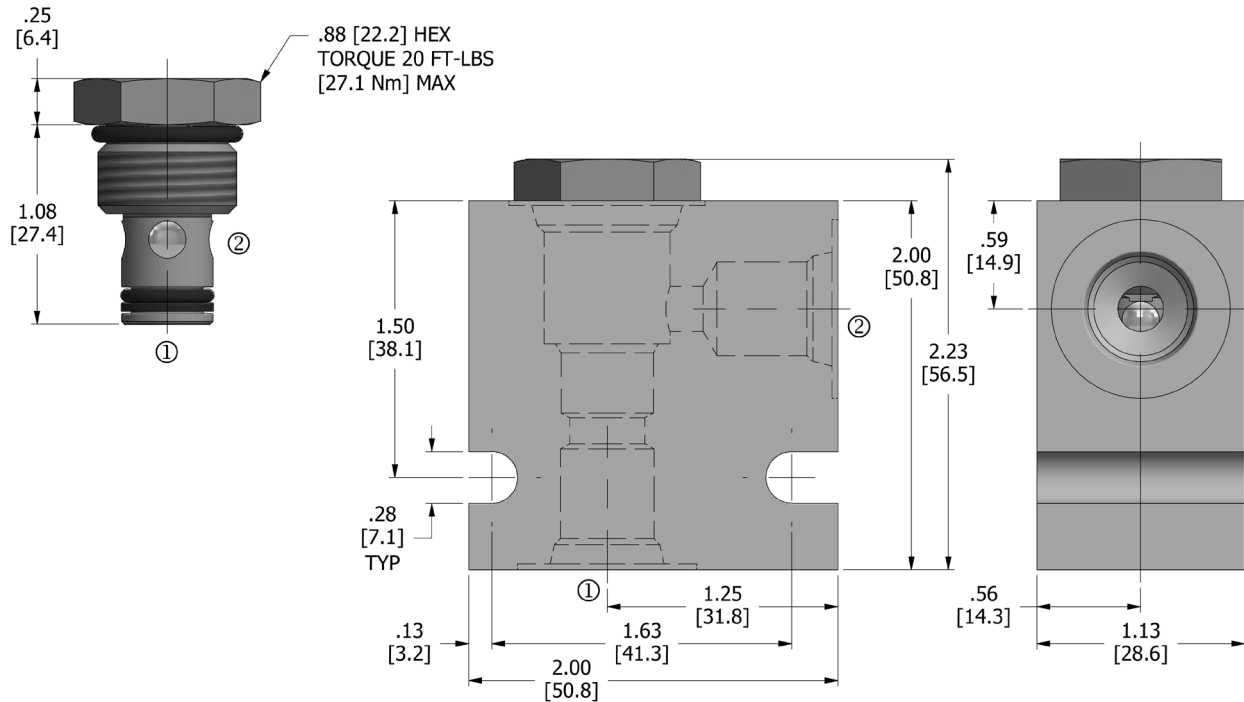
In-Line Body Material: Anodized 6061T6 aluminum alloy rated at 3000 psi (207 bar).

5 psi (0.3 bar)

PRESSURE DROP VS. FLOW



DIMENSIONS Inches [Millimeters]



HOW TO ORDER



Seals		Seal Kit
N	Buna N	DSK-080-2-N-A
V	Viton	DSK-080-2-V-A

Crack Pressure	
2	2 psi (0.1 bar)
5	5 psi (0.3 bar)
10	10 psi (0.7 bar)
30	30 psi (2.1 bar)
60	60 psi (4.5 bar)
100	100 psi (6.9 bar)

Porting†		In-Line Body w/o Cartridge
omit	Cartridge only w/nut	
2N	1/4 PTF	B-080-2-2N
3N	3/8 PTF	B-080-2-3N
4T	SAE 4	B-080-2-4T
6T	SAE 6	B-080-2-6T

† Other options available – consult factory

Valve and In-Line Body are supplied individually and need to be assembled. For a completed assembly consult the factory.

All variations may not be configurable. Minimum order quantities may be required on other models. Contact Deltrol Fluid Products for complete details.