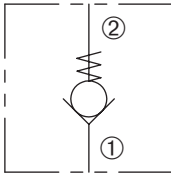


# DCV-100-P

Direct-Acting, Poppet-Type  
Cartridge Check Valve

## SERIES 10

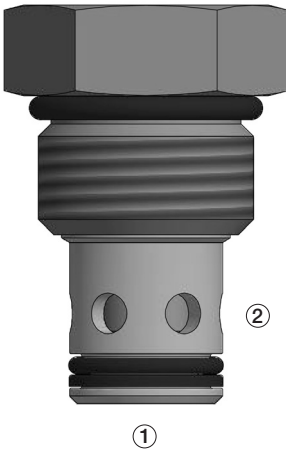


### DESCRIPTION

A cartridge valve designed to allow free flow in one direction, while preventing flow in the opposite direction. This valve is commonly used as a load-holding or blocking valve.

### OPERATION

Pressure at ① overcomes the spring-bias poppet and allows free flow to ②. Flow in the opposite direction, from ② to ①, is blocked by the poppet.



### FEATURES and BENEFITS

- Hardened poppet and seat for long life.
- Industry common cavity.

### SPECIFICATIONS

**Operating Pressure:** 3000 psi (207 bar)

**Flow:** See PRESSURE DROP VS. FLOW graph.  
Nominal flow 10 gpm (37.9 lpm)

**Internal Leakage:** 5 drops/min max. at 3000 psi (207 bar)

**Crack Pressure:**

- 5 psi ( 0.3 bar)
- 15 psi ( 1.0 bar)
- 30 psi ( 2.1 bar)
- 65 psi ( 4.5 bar)
- 100 psi ( 6.9 bar)
- 300 psi (20.7 bar)

**Temperature:** -30°F to +250°F (-35°C to +120°C)

**Recommended Filtration:** Critical Application – ISO 17/15/13  
Non-Critical Application – ISO 20/18/14

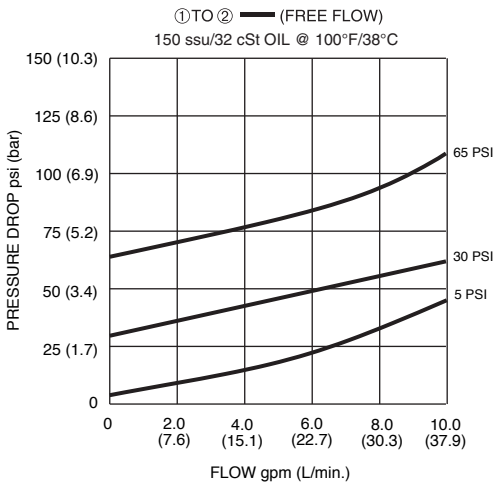
**Fluids:** Mineral-based fluids.

For other fluid compatibility, consult factory.

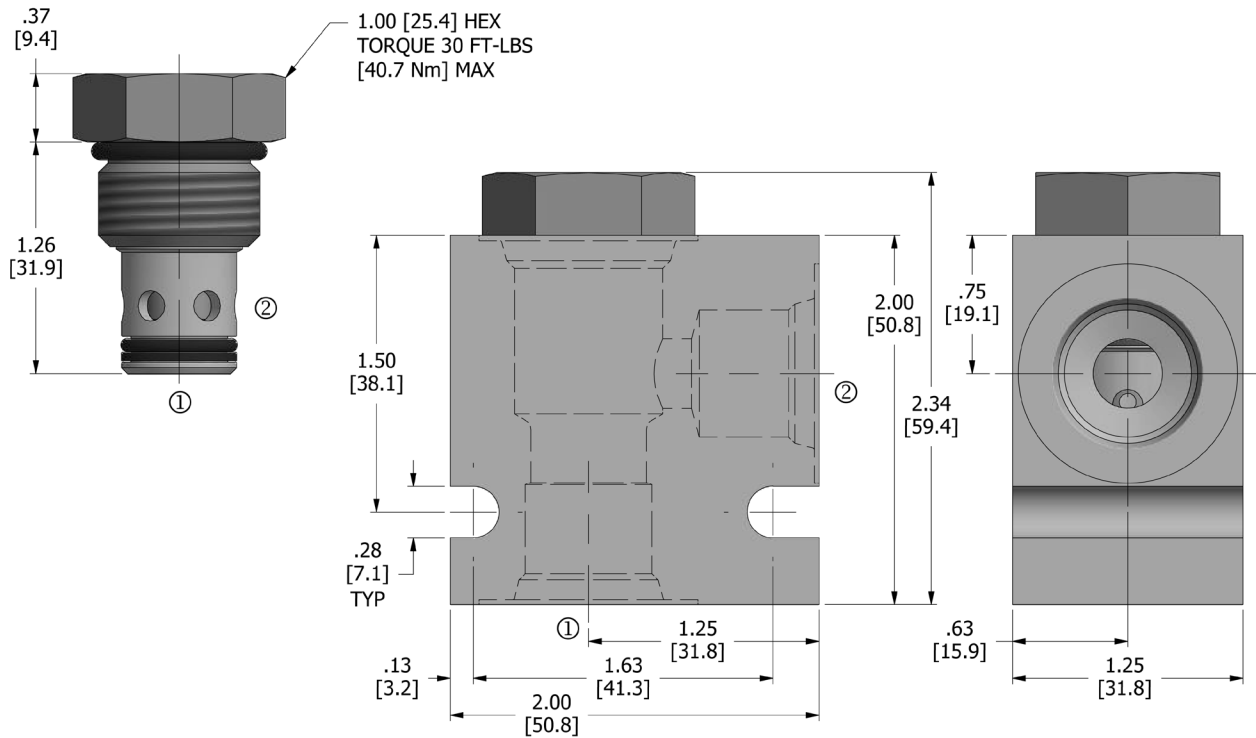
**Cavity/Cavity Tool:** 100-2, see page 11.10.2

**In-Line Body Material:** Anodized 6061T6 aluminum alloy rated at 3000 psi (207 bar).

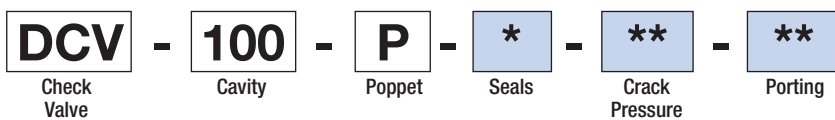
### PRESSURE DROP VS. FLOW



## DIMENSIONS Inches [Millimeters]



## HOW TO ORDER



Seals		Seal Kit
<b>N</b>	Buna N	DSK-100-2-N-A
<b>V</b>	Viton	DSK-100-2-V-A

Crack Pressure	
<b>5</b>	5 psi (0.3 bar)
<b>15</b>	15 psi (1.0 bar)
<b>30</b>	30 psi (2.1 bar)
<b>65</b>	65 psi (4.5 bar)
<b>100</b>	100 psi (6.9 bar)
<b>300</b>	300 psi (20.7 bar)

Porting <sup>†</sup>		In-Line Body w/o Cartridge
omit	Cartridge only	
<b>2N</b>	1/4 PTF	B-100-2-2N
<b>3N</b>	3/8 PTF	B-100-2-3N
<b>6T</b>	SAE 6	B-100-2-6T
<b>8T</b>	SAE 8	B-100-2-8T

<sup>†</sup> Other options available – consult factory

Valve and In-Line Body are supplied individually and need to be assembled. For a completed assembly consult the factory.

All variations may not be configurable. Minimum order quantities may be required on other models. Contact Deltrol Fluid Products for complete details.