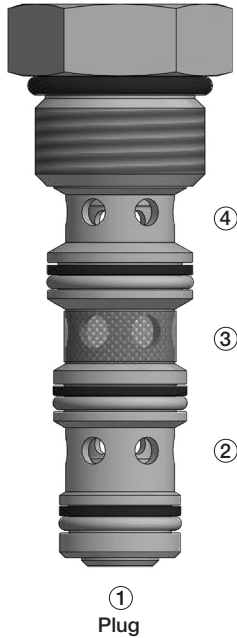
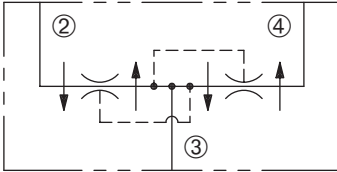


DFD-100

Pressure-Compensated,
Flow Divider/Combiner Valve

SERIES 10



DESCRIPTION

A cartridge valve designed to divide or combine flow at designated ratios regardless of load pressures.

OPERATION

In the dividing mode, the DFD-100 will split the input flow from port ③ to ports ② and ④ per the ratio specified.

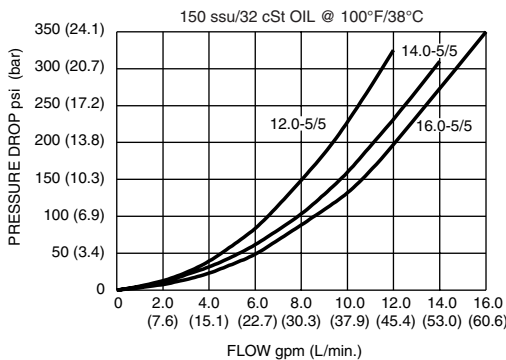
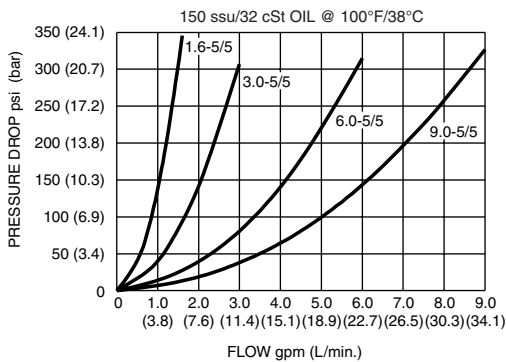
The DFD-100 will combine input flows from ports ② and ④ to a common port ③.

This valve has no port ① function.

FEATURES and BENEFITS

- Pressure-compensated.
- Quiet response.
- Optional dividing/combining ratios.
- Industry common cavity.

PRESSURE DROP VS. FLOW



SPECIFICATIONS

Operating Pressure: 3000 psi (207 bar) A minimum pressure differential of 40 psid is required to operate valve.

Flow: See max. rated input flow in ordering table.

Flow Tolerances: ±10% from 30-100% of rated flow for all 5/5 models except 16.0-5/5 which is ±10% from 40-100% of rated flow. (Consult factory for all other models.)

Temperature: -30° F to +250° F (-35°C to +120° C)

Recommended Filtration: ISO 17/15/13

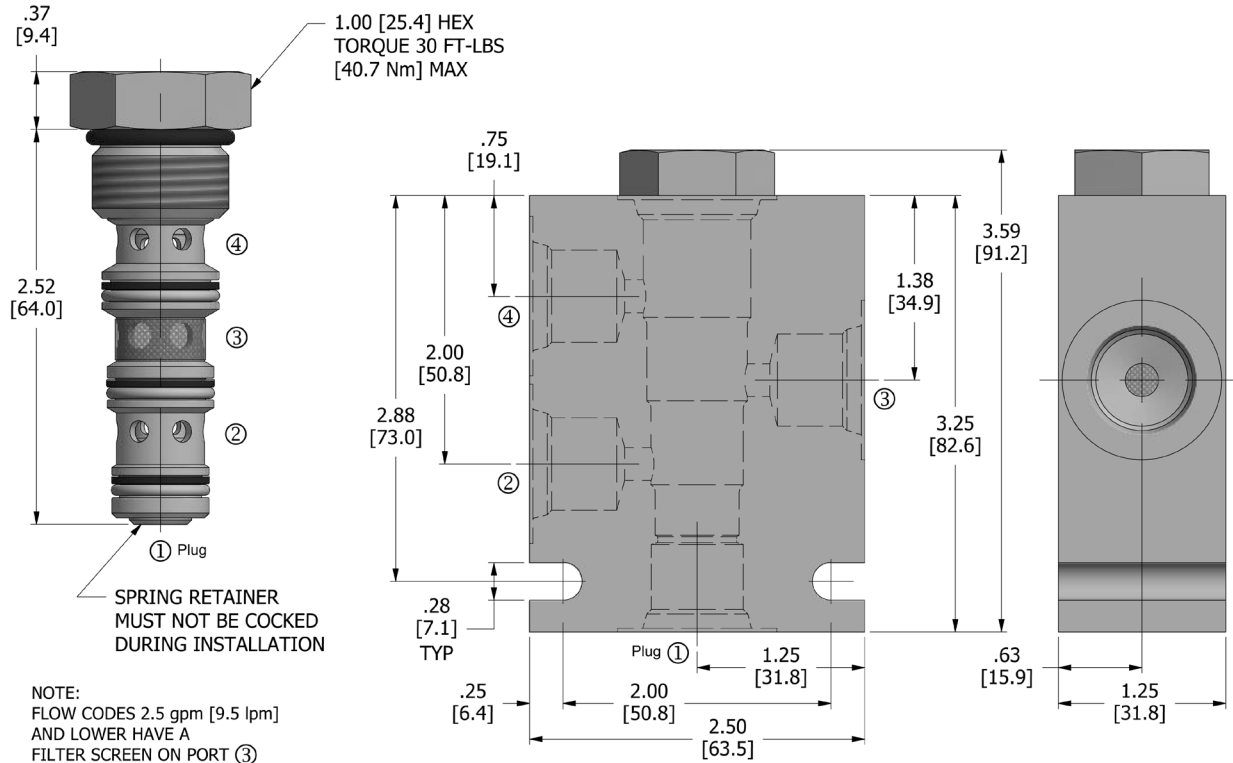
Fluids: Mineral-based fluids.

For other fluid compatibility consult factory.

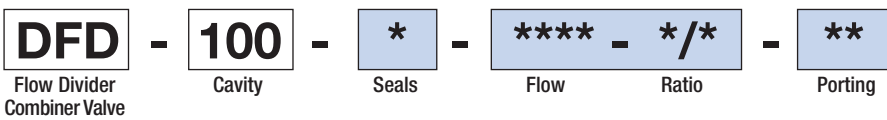
Cavity/Cavity Tool: 100-4, see page 11.10.4

In-Line Body Material: Anodized 6061T6 aluminum alloy rated at 3000 psi (207 bar).

DIMENSIONS Inches [Millimeters]



HOW TO ORDER



Seals		Seal Kit
N	Buna N	
V	Viton	

Porting [†]		In-Line Body w/o Cartridge
omit	Cartridge only	
2N	1/4 PTF	B-100-4/3-2N
3N	3/8 PTF	B-100-4/3-3N
6T	SAE 6	B-100-4/3-6T
8T	SAE 8	B-100-4/3-8T

Use In-Line body without port ① or plug port ①.

Flow and Ratio [†] (Dividing or Combining)					
	Input Flow Max.	Ratio (Port 2/Port 4)		Input Flow Max.	Ratio (Port 2/Port 4)
0.6 - 5/5	0.6 gpm (2.3 lpm)	50:50	9.0 - 7/3	9.0 gpm (34.1 lpm)	67:33
1.6 - 5/5	1.6 gpm (6.1 lpm)	50:50	9.0 - 3/7	9.0 gpm (34.1 lpm)	33:67
2.5 - 7/3	2.5 gpm (9.5 lpm)	67:33	12.0 - 5/5	12.0 gpm (45.4 lpm)	50:50
2.5 - 3/7	2.5 gpm (9.5 lpm)	33:67	12.5 - 7/3	12.5 gpm (47.3 lpm)	67:33
3.0 - 5/5	3.0 gpm (11.4 lpm)	50:50	12.5 - 3/7	12.5 gpm (47.3 lpm)	33:67
4.5 - 7/3	4.5 gpm (17.0 lpm)	67:33	14.0 - 5/5	14.0 gpm (53.0 lpm)	50:50
4.5 - 3/7	4.5 gpm (17.0 lpm)	33:67	14.0 - 6/4	14.0 gpm (53.0 lpm)	60:40
6.0 - 5/5	6.0 gpm (22.7 lpm)	50:50	14.0 - 4/6	14.0 gpm (53.0 lpm)	40:60
7.5 - 6/4	7.5 gpm (28.4 lpm)	60:40	16.0 - 5/5	16.0 gpm (60.6 lpm)	50:50
7.5 - 4/6	7.5 gpm (28.4 lpm)	40:60			
9.0 - 5/5	9.0 gpm (34.1 lpm)	50:50			

[†] Other options available – consult factory

Valve and In-Line Body are supplied individually and need to be assembled. For a completed assembly consult the factory.

All variations may not be configurable. Minimum order quantities may be required on other models. Contact Deltrol Fluid Products for complete details.

