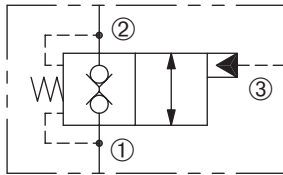


DPOD-100S-2NCP

Pilot To Open, Poppet-Type,
Directional Control Valve

SERIES 10

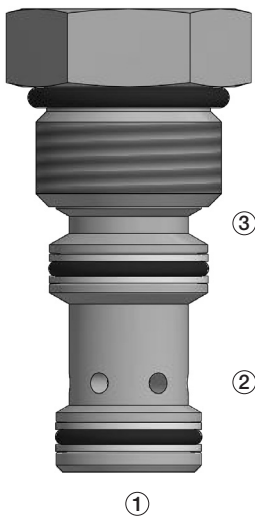


DESCRIPTION

A cartridge valve designed to block flow in both directions. Free flow can be achieved by reaching the required pilot pressure. This valve is commonly used in load holding or blocking applications.

OPERATION

In the steady state the poppet is held closed to block flow between ① and ② and ② and ①. When the required pilot pressure is achieved at ③, the poppet is held open to allow free flow between ② and ① or ① and ②. The pilot area ratio port ③ to ① is 1.3:1 and the area ratio port ③ to ② is 1.8:1.



FEATURES and BENEFITS

- Hardened spool and sleeve for long life and low leakage.
- Industry common cavity.

SPECIFICATIONS

Operating Pressure: 3000 psi (207 bar)

Flow: See PRESSURE DROP VS. FLOW graph.

Nominal flow 8 gpm (30.4 lpm)

Internal Leakage: 5 drops/min max. at 3000 psi (207 bar)

Bias Spring: 30 psi (2.1 bar) at port ③

Pilot Ratio: ③ to ① is 1.3:1 and ③ to ② is 1.8:1.

Temperature: -30°F to +250°F (-35°C to +120°C)

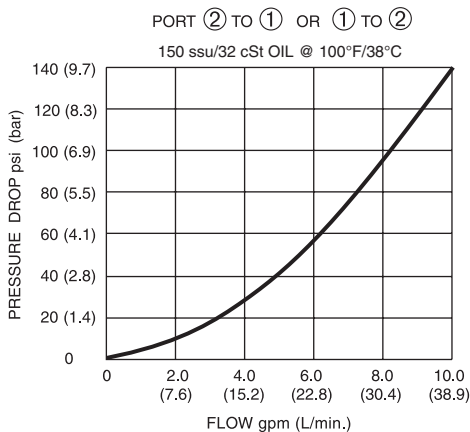
Recommended Filtration: ISO 17/15/13

Fluids: Mineral-based fluids. For other fluid compatibility, consult factory.

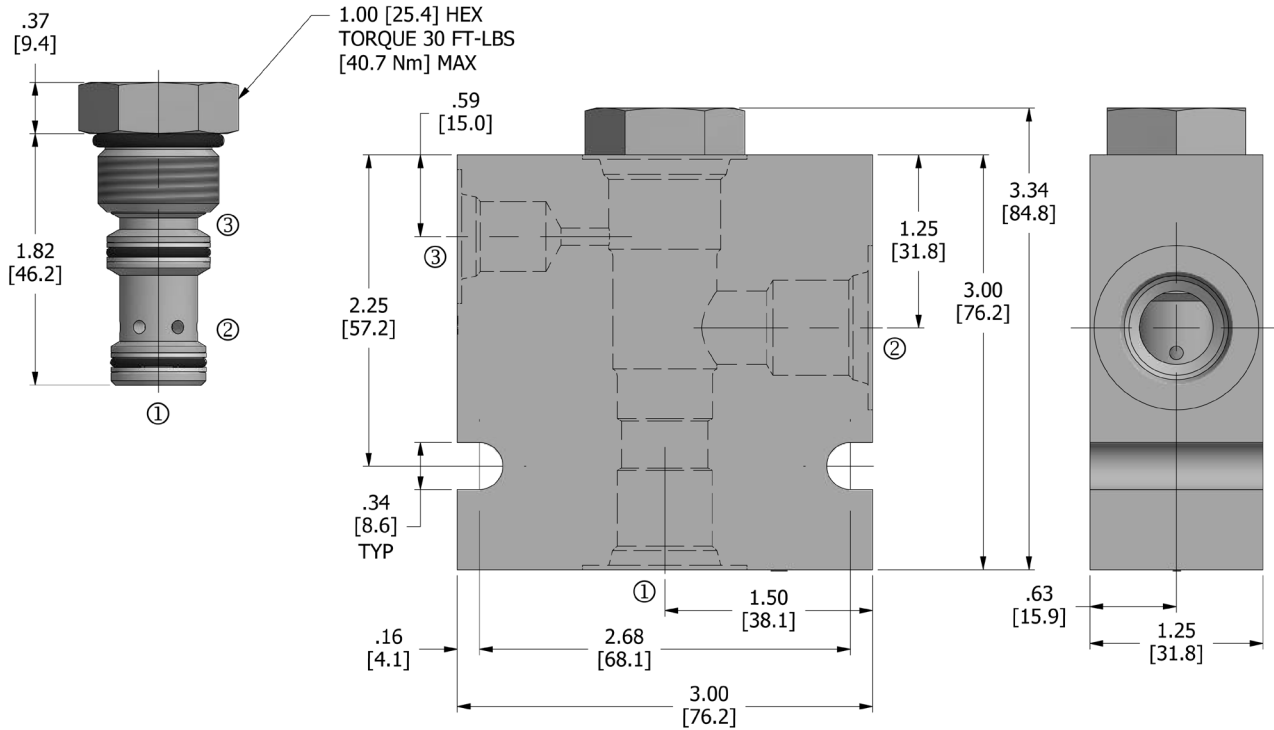
Cavity/Cavity Tool: 100-3S, see page 11.10.3S

In-Line Body Material: Anodized 6061T6 aluminum alloy rated at 3000 psi (207 bar).

PRESSURE DROP VS. FLOW



DIMENSIONS Inches [Millimeters]



HOW TO ORDER

DPOD - **100S** - **2** **NC** **P** - ***** - ****** - *******
 Pilot-Operated Directional Control Valve Cavity Flow Path Normally Closed Poppet Seals Bias Spring Porting

Seals		Seal Kit
N	Buna N	
V	Viton	

Bias Spring	
30	30 psi (2.1 bar)

Porting [†]		In-Line Body w/o Cartridge
omit	Cartridge only	
8T	SAE 8	B-100-3S-8T
10T	SAE 10	B-100-3S-10T

[†] Other options available – consult factory

Valve and In-Line Body are supplied individually and need to be assembled. For a completed assembly consult the factory.

All variations may not be configurable. Minimum order quantities may be required on other models. Contact Deltrol Fluid Products for complete details.