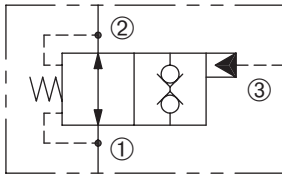


DPOD-100S-2NOP

Pilot To Close, Poppet-Type,
Directional Control Valve

SERIES 10

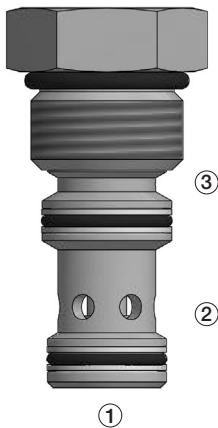


DESCRIPTION

A cartridge valve designed to allow free flow in both directions. The valve can be piloted to block flow in both directions. This valve can be used as a load holding or blocking valve.

OPERATION

Pressure at ① or ② overcomes the spring-bias poppet and allows free flow between ② and ① or ① to ②. When required the pilot pressure is achieved at ③, the poppet is held closed to block flow between ② and ① and ① and ②. The pilot area ratio port ③ to ① is 2:1 and the area ratio port ③ to ② is 2.8:1.



FEATURES and BENEFITS

- Hardened poppet and sleeve for long life and low leakage.
- Industry common cavity.

SPECIFICATIONS

Operating Pressure: 3000 psi (207 bar)

Flow: See PRESSURE DROP VS. FLOW graph.

Nominal flow 10 gpm (38.9 lpm)

Internal Leakage: 5 drops/min max. at 3000 psi (207 bar)

Crack Pressure: 65 psi (45 bar) at port 1 (biased spring).

85 psi (58.6 bar) at port 2 (biased spring).

Bias Spring: 65 psi (4.5 bar)

Pilot Ratio: ③ to ① is 2:1 and ③ to ② is 2.8:1.

Temperature: -30°F to +250°F (-35°C to +120°C)

Recommended Filtration: ISO 17/15/13

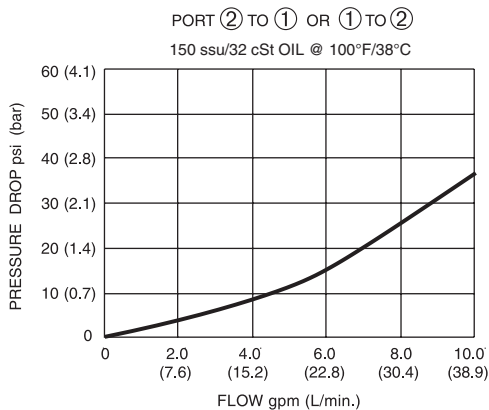
Non-Critical Application – ISO 20/18/14

Fluids: Mineral-based fluids. For other fluid compatibility, consult factory.

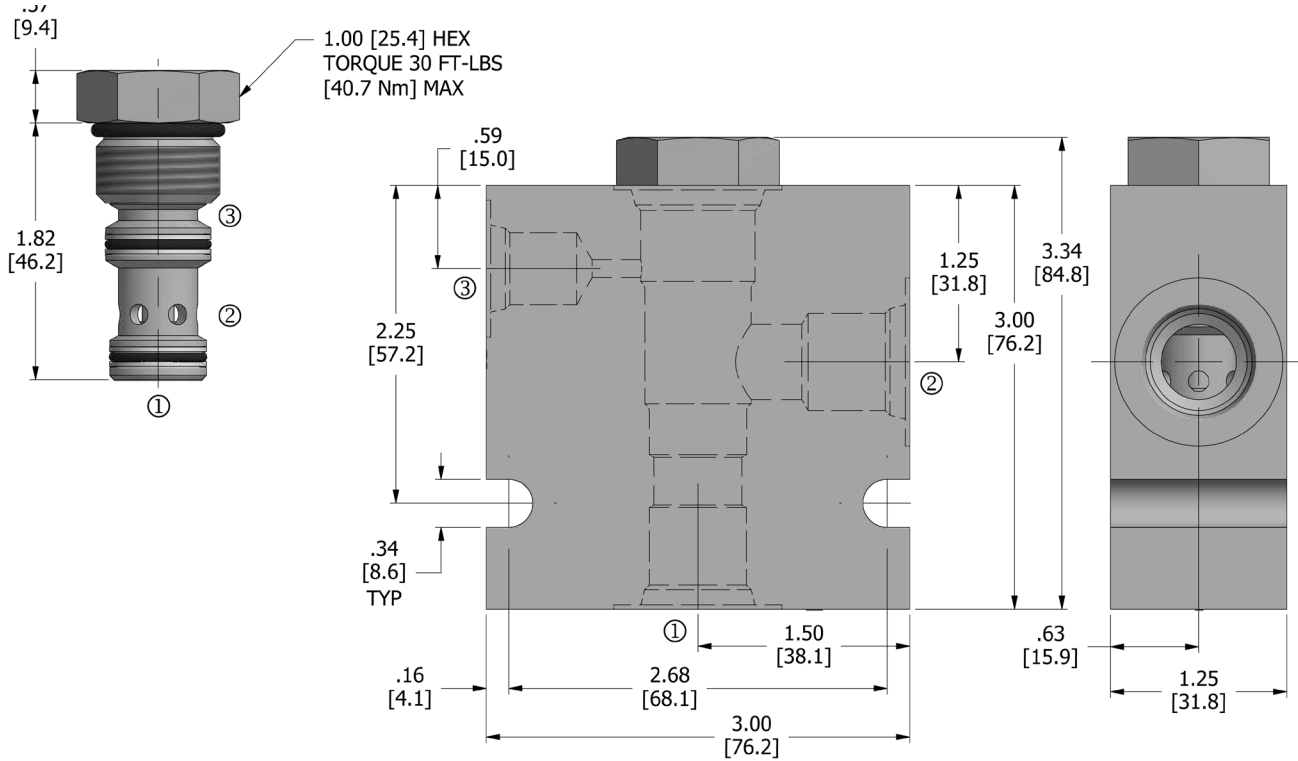
Cavity/Cavity Tool: 100-3S, see page 11.10.3S

In-Line Body Material: Anodized 6061T6 aluminum alloy rated at 3000 psi (207 bar).

PRESSURE DROP VS. FLOW



DIMENSIONS Inches [Millimeters]



HOW TO ORDER

DPOD - **100S** - **2** **NO** **P** - ***** - ****** - *******
 Pilot-Operated Directional Control Valve Cavity Flow Path Normally Open Poppet Seals Bias Spring Porting

Seals		Seal Kit
N	Buna N	
V	Viton	

Bias Spring	
65	65 psi (4.5 bar)

Porting†		In-Line Body w/o Cartridge
omit	Cartridge only	
8T	SAE 8	B-100-3S-8T
10T	SAE 10	B-100-3S-10T

† Other options available – consult factory

Valve and In-Line Body are supplied individually and need to be assembled. For a completed assembly consult the factory.

All variations may not be configurable. Minimum order quantities may be required on other models. Contact Deltrol Fluid Products for complete details.