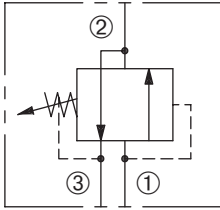


# DPS2-080

Adjustable, Internally-Piloted,  
Internally-Drained Sequence Valve

## SERIES 8



### DESCRIPTION

An adjustable, internally-piloted spool cartridge valve designed to direct oil to a circuit when a predetermined pressure has been reached.

### OPERATION

The DPS2-080 in steady state allows flow from ② to ③ with ① blocked. When the preset pressure at ① is achieved, the spool shifts to allow flow ① to ②.

### FEATURES and BENEFITS

- Hardened spool and sleeve for long life.
- Hidden adjustment option.
- Adjustment may be locked in place.
- Industry common cavity.

### SPECIFICATIONS

**Operating Pressure:** 3000 psi (207 bar)

**Flow:** See PRESSURE DROP VS. FLOW graph.  
Nominal Flow 6 gpm (22.7 lpm)

**Internal Leakage:** 82 cc/min at 3000 psi (207 bar)

**Temperature:** -30°F to +250°F (-35°C to +120°C).

**Spring Range:** 300 to 3000 psi (21 to 207 bar)  
Preset (See HOW TO ORDER)

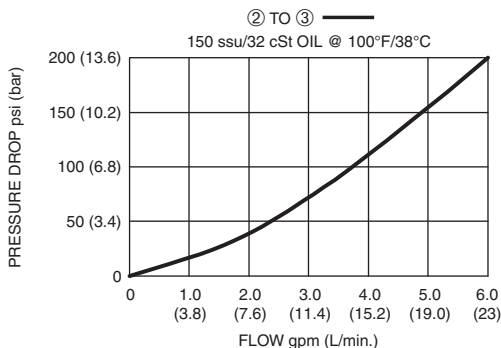
**Recommended Filtration:** ISO 17/15/13

**Fluids:** Mineral-based fluids.

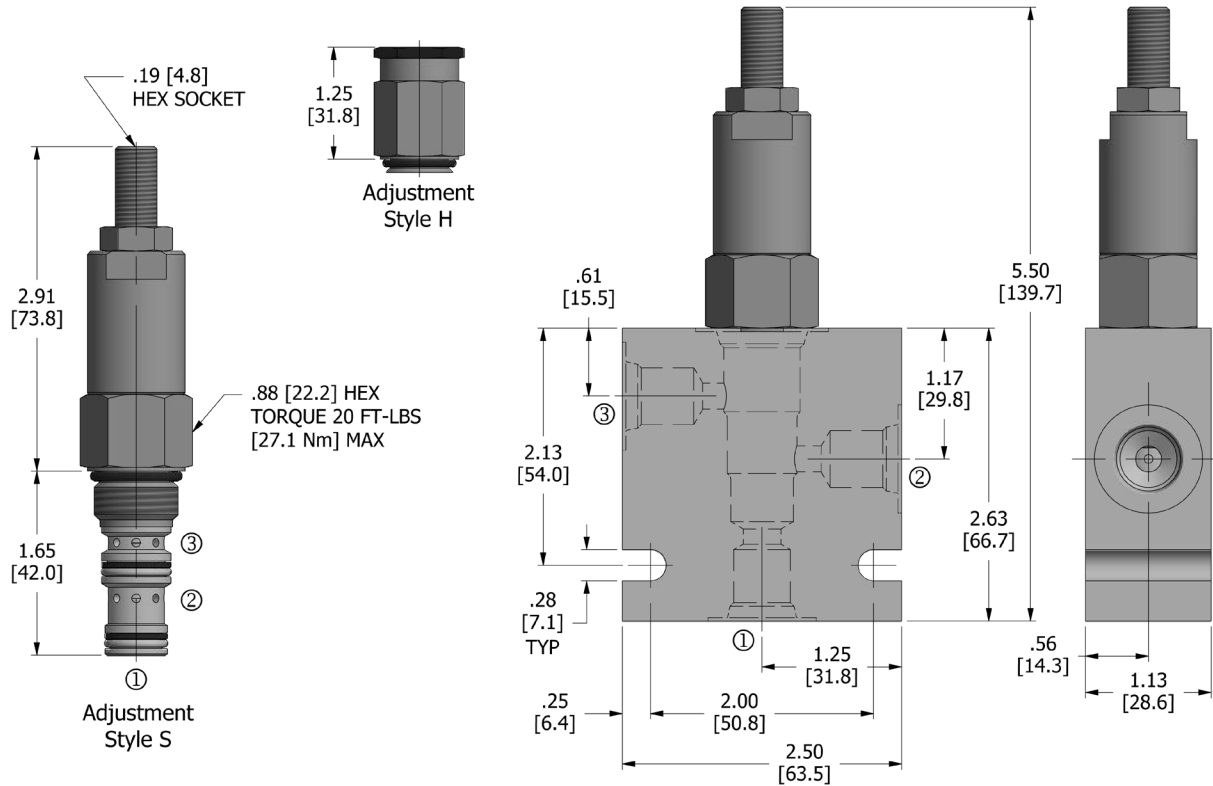
**Cavity/Cavity Tool:** 080-3, see page 11.08.3

**In-Line Body Material:** Anodized 6061T6 aluminum alloy  
rated at 3000 psi (207 bar).

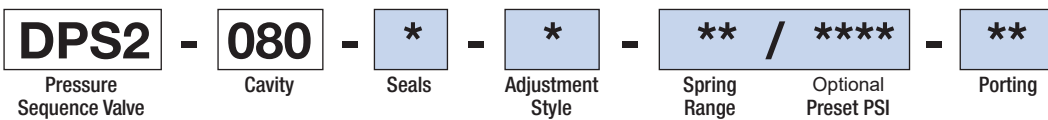
### PRESSURE DROP VS. FLOW



**DIMENSIONS** Inches [Millimeters]



**HOW TO ORDER**



Seals		Seal Kit
<b>N</b>	Buna N	
<b>V</b>	Viton	

Spring Range		Preset
<b>20</b>	300 to 2000 psi (21 to 138 bar)	1500 psi (103 bar)
<b>30</b>	1500 to 3000 psi (103 to 207 bar)	2000 psi (138 bar)

Porting†		In-Line Body w/o Cartridge
omit	Cartridge only	
<b>2N</b>	1/4 PTF	B-080-3-2N
<b>3N</b>	3/8 PTF	B-080-3-3N
<b>4T</b>	SAE 4	B-080-3-4T
<b>6T</b>	SAE 6	B-080-3-6T

Adjustment Style	
<b>H</b>	Hidden
<b>S</b>	Screw

Optional Preset PSI	
<b>****</b>	example: 2550 = 2550 psi
<b>700</b>	700 psi
<b>950</b>	950 psi
<b>1100</b>	1100 psi
<b>1500</b>	1500 psi

† Other options available – consult factory

Valve and In-Line Body are supplied individually and need to be assembled. For a completed assembly consult the factory.

All variations may not be configurable. Minimum order quantities may be required on other models. Contact Deltrol Fluid Products for complete details.

SOLENOID  
CHECK  
MOTION CONTROL  
FLOW CONTROL  
RELIEF  
PRESSURE CONTROL  
SEQUENCE  
SHUTTLE  
DIRECTIONAL VALVES  
HAND PUMPS  
TECHNICAL DATA