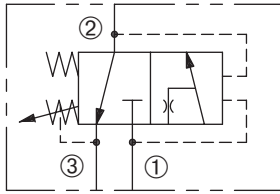


DPSK-080

Adjustable, Pilot-Operated,
Kick-Down Sequence Valve
5000 psi (345 bar)

SERIES 8



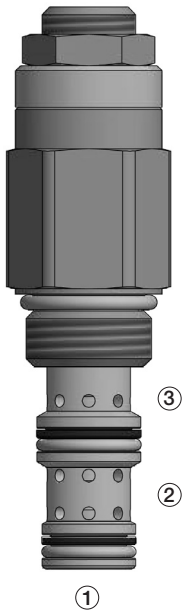
DESCRIPTION

An adjustable, pilot-operated spool cartridge valve designed to direct oil to a circuit when a predetermined pressure has been reached.

OPERATION

The DPSK-080 in steady state blocks flow at ① while allowing flow from ② to ③. When the preset pressure at ① is achieved, the pilot section opens. This pilot flow creates a pressure differential across the spool, which causes the spool to shift to allow flow from ① to ②.

The spool will not shift back (kick-down) until pressure at ② falls below a predetermined pressure.



FEATURES and BENEFITS

- Hardened precision spool and sleeve for long life.
- Variety of pressure ranges.
- High accuracy of pilot operated design.
- Adjustment prevents spring from going solid.
- Adjustment may be locked in place.
- Hidden adjustment option.
- Industry common cavity.

SPECIFICATIONS

Operating Pressure: 5000 psi (345 bar)

Flow: See PRESSURE DROP VS. FLOW graph

Nominal flow 5 gpm (18.9 lpm)

Internal Leakage: 5 in³/min (82 cc/min) max. at 3000 psi (207 bar)

Spring Range: 300 to 5000 psi (21 to 345 bar)

Preset (See HOW TO ORDER)

Reset Spring Pressure: 100 psi (7 bar)

Temperature: -30°F to +250°F (-35°C to +120°C)

Recommended Filtration: ISO 19/15

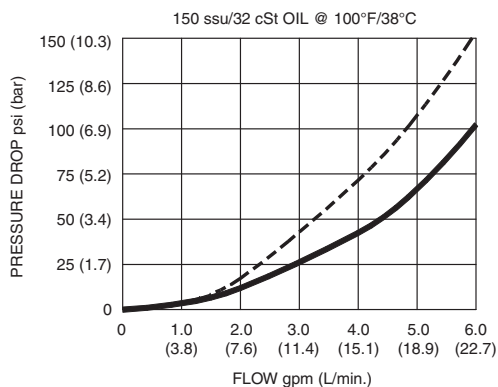
Fluids: Mineral-based fluids.

For other fluid compatibility, consult factory.

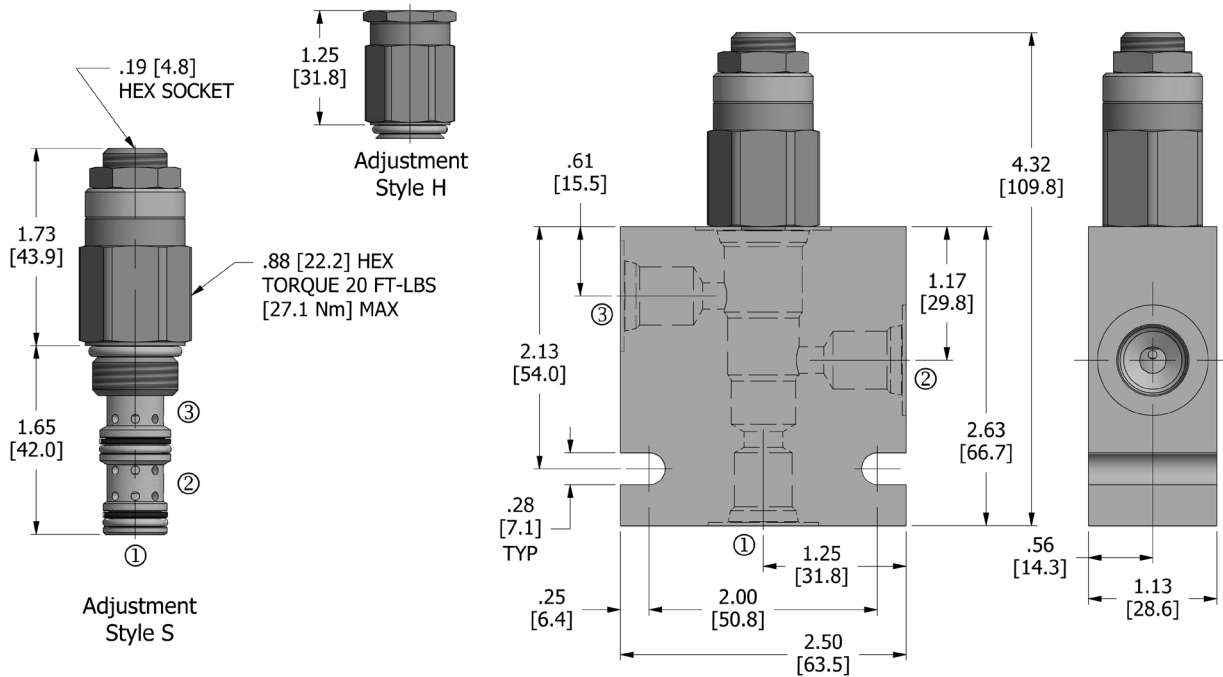
Cavity/Cavity Tool: 080-3, see page 11.08.3

In-Line Body Material: Anodized 6061T6 aluminum alloy rated at 3000 psi (207 bar).

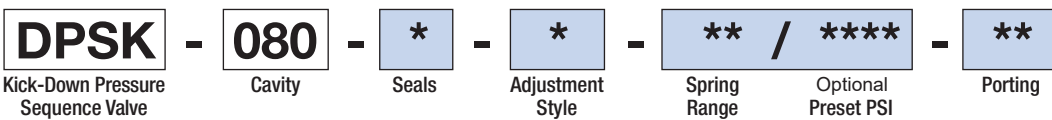
PRESSURE DROP VS. FLOW



DIMENSIONS Inches [Millimeters]



HOW TO ORDER



Seals		Seal Kit
U	Urethane	

Adjustment Style	
H	Hidden
S	Screw

Spring Range		Preset
15	300 to 1500 psi (21 to 103 bar)	300 psi (21 bar)
50	300 to 5000 psi (21 to 345 bar)	3000 psi (206 bar)

Optional Preset PSI	
****	example: 2550 = 2550 psi
700	700 psi
950	950 psi
1100	1100 psi
1500	1500 psi

Porting†		In-Line Body w/o Cartridge
omit	Cartridge only	
2N	1/4 PTF	B-080-3-2N
3N	3/8 PTF	B-080-3-3N
4T	SAE 4	B-080-3-4T
6T	SAE 6	B-080-3-6T

† Other options available – consult factory

Valve and In-Line Body are supplied individually and need to be assembled. For a completed assembly consult the factory.

All variations may not be configurable. Minimum order quantities may be required on other models. Contact Deltrol Fluid Products for complete details.

