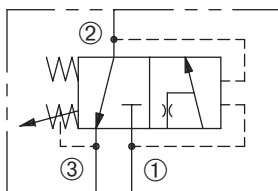


DPSK2-100 (Reset 300 PSI)

Adjustable, Pilot-Operated
Kick-Down Sequence Valve



SERIES 10



DESCRIPTION

An adjustable, pilot-operated spool cartridge valve designed to direct oil to a circuit when a predetermined pressure has been reached.

OPERATION

The DPSK2-100 in the steady state blocks flow at ① while allowing flow from ② to ③. When the preset pressure at ① is achieved, the pilot section opens. This pilot flow creates a pressure differential across the spool, which causes the spool to shift to allow flow from ① to ②. The spool will not shift back (kick-down) until pressure at ② falls below a predetermined pressure.

FEATURES and BENEFITS

- Higher kick-down pressure than DPSK-100 (see page 7.05.1).
- Variety of pressure ranges.
- Hardened precision spool and sleeve for long life.
- Hidden adjustment (tamper resistant) option.
- Aluminum knob and disc nut option.
- Adjustment may be locked in place.
- Industry common cavity.

SPECIFICATIONS

Operating Pressure: 3000 psi (207 bar)

Flow: See PRESSURE DROP VS. FLOW graph.

Nominal flow 5 gpm (18.9 lpm)

Internal Leakage: 5 in³/min (82 cc/min) max. at 3000 psi (207 bar)

Spring Range: 350 to 3000 psi (24 to 207 bar)

Preset (See HOW TO ORDER)

Reset Spring Pressure: 300 psi (21 bar)

Temperature: -30°F to +250°F (-35°C to +120°C)

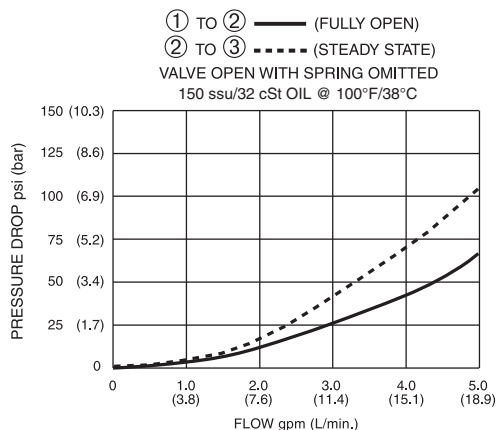
Recommended Filtration: ISO 20/18/14

Fluids: Mineral-based fluids. For other fluid compatibility, consult factory.

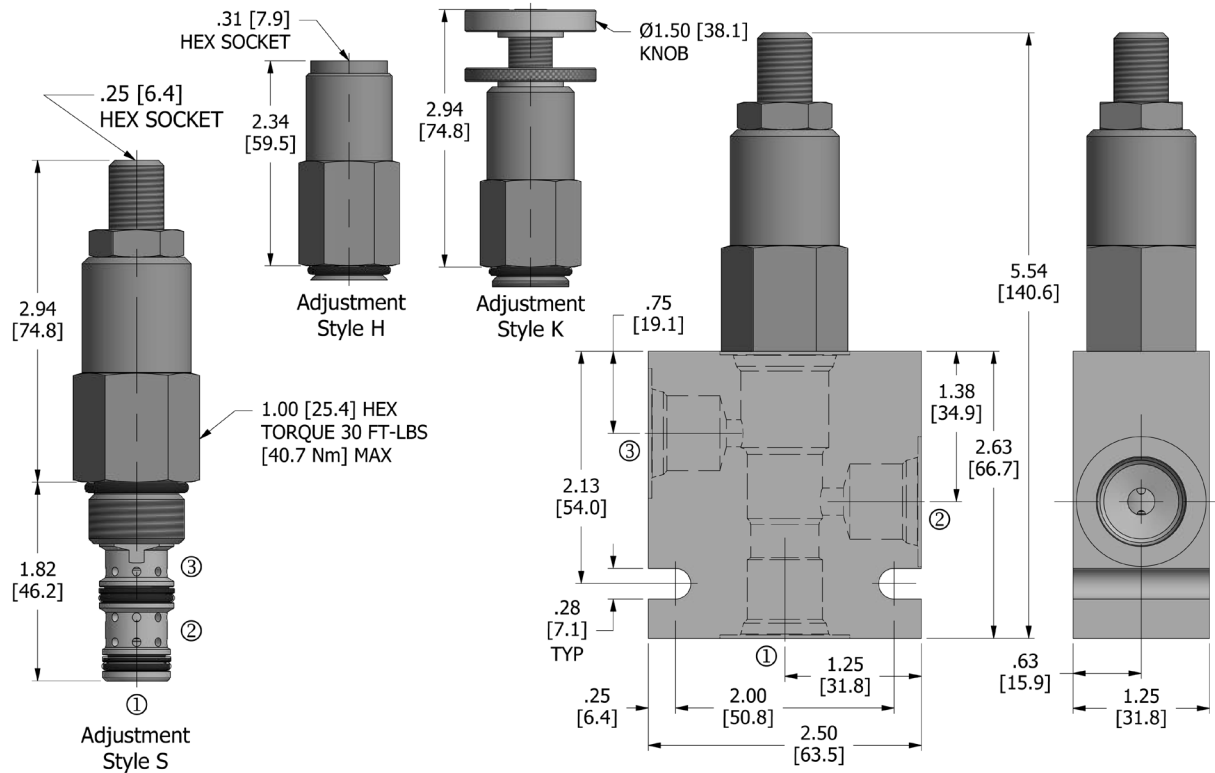
Cavity/Cavity Tool: 100-3, see page 11.10.3

In-Line Body Material: Anodized 6061T6 aluminum
alloy rated at 3000 psi (207 bar).

PRESSURE DROP VS. FLOW



DIMENSIONS Inches [Millimeters]



HOW TO ORDER

DPSK2 - **100** - ***** - ***** - **** / ****** - ******

Kick-Down Pressure Sequence Valve Cavity Seals Adjustment Style Spring Range Optional Preset PSI Porting

Seals		Seal Kit
N	Buna N	DSK-100-3-N-C
V	Viton	

Adjustment Style	
H	Hidden
K	Knob
S	Screw

Spring Range		Preset
30	350 to 3000 psi (24 to 207 bar)	1500 psi (103 bar)

Optional Preset PSI	
****	example: 2550 = 2550 psi
1100	1100 psi
1200	1200 psi
1300	1300 psi
3000	3000 psi

Porting†		In-Line Body w/o Cartridge
omit	Cartridge only	
2N	1/4 PTF	B-100-3-2N
3N	3/8 PTF	B-100-3-3N
6T	SAE 6	B-100-3-6T
8T	SAE 8	B-100-3-8T

† Other options available – consult factory

Valve and In-Line Body are supplied individually and need to be assembled. For a completed assembly consult the factory.

All variations may not be configurable. Minimum order quantities may be required on other models. Contact Deltrol Fluid Products for complete details.