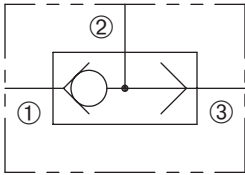


DSH-100

Ball-Type
Shuttle Valve

SERIES 10

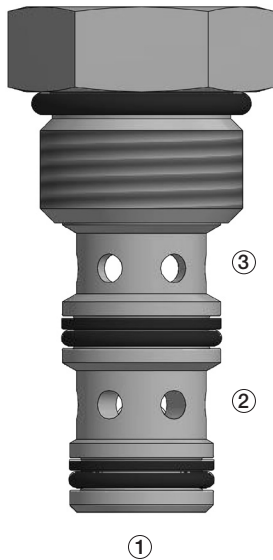


DESCRIPTION

A cartridge valve designed to direct flow from either of the two inlet ports to a common outlet port.

OPERATION

The DSH-100 allows the check ball to move away from inlet port ① or ③ with the greatest differential pressure and seat against the other inlet port having the least differential pressure providing a flow path to outlet port ②.



FEATURES and BENEFITS

- Excellent response to pressure changes.
- Hardened working parts for long life.
- Industry common cavity.

SPECIFICATIONS

Operating Pressure: 3000 psi (207 bar)

Flow: See PRESSURE DROP VS. FLOW graph.
Nominal flow 6 gpm (22.7 lpm)

Internal Leakage: 5 drops/min max. at 3000 psi (207 bar)

Temperature: -30°F to +250°F (-35°C to +120°C)

Recommended Filtration: Critical Application – ISO 17/15/13

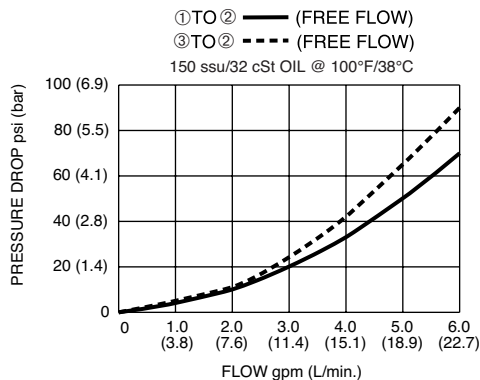
Non-Critical Application – ISO 20/18/14

Fluids: Mineral-based fluids. For other fluid compatibility, consult factory.

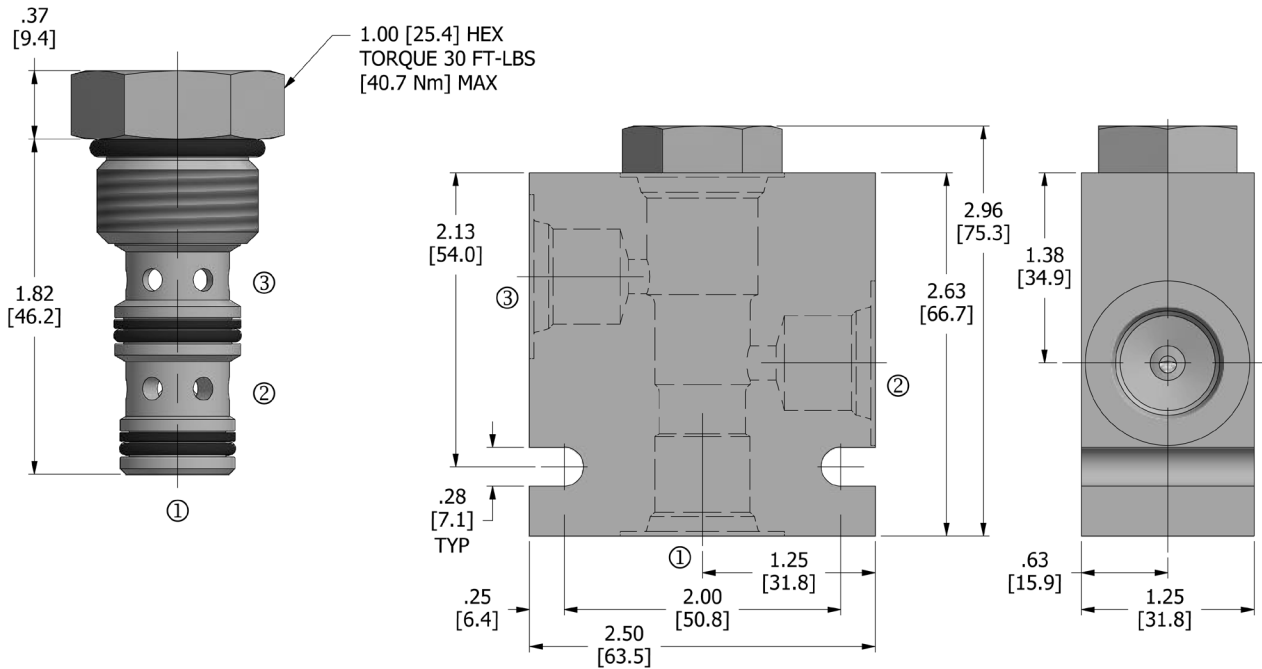
Cavity/Cavity Tool: 100-3, see page 11.10.3

In-Line Body Material: Anodized 6061T6 aluminum alloy rated at 3000 psi (207 bar).

PRESSURE DROP VS. FLOW



DIMENSIONS Inches [Millimeters]



HOW TO ORDER



Seals		Seal Kit
N	Buna N	DSK-100-3-N-C
V	Viton	

Porting [†]		In-Line Body w/o Cartridge
omit	Cartridge only	
2N	1/4 PTF	B-100-3-2N
3N	3/8 PTF	B-100-3-3N
6T	SAE 6	B-100-3-6T
8T	SAE 8	B-100-3-8T

[†] Other options available – consult factory

Valve and In-Line Body are supplied individually and need to be assembled. For a completed assembly consult the factory.

All variations may not be configurable. Minimum order quantities may be required on other models. Contact Deltrol Fluid Products for complete details.