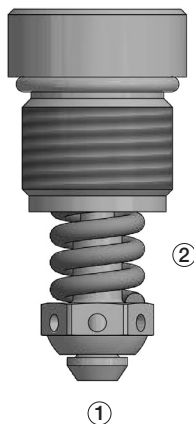
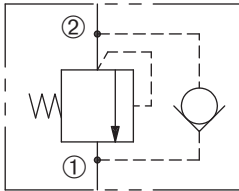


RV-050

Relief Valve,
Anti-Cavitation Check
5500 psi (380 bar)

SERIES 050



DESCRIPTION

A cartridge valve designed to combine a shock relief valve, (direct acting) and anti-cavitation function through the check valve.

OPERATION

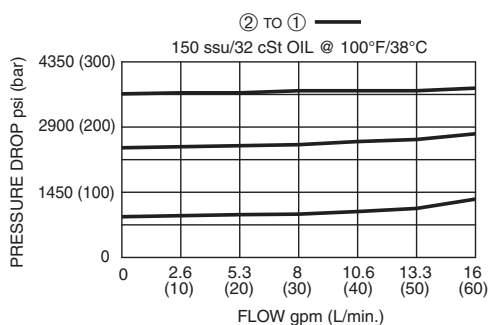
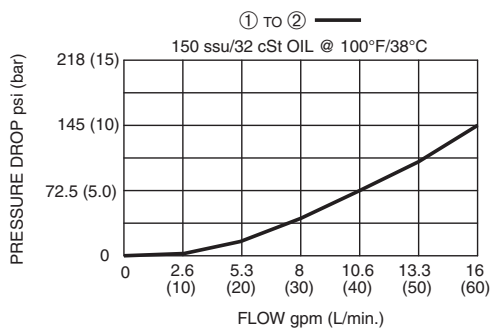
The RV-050 prevents flow from ② to ① until the set crack pressure at ② is achieved. The poppet then unseats, allowing flow from ② to ①, protecting the circuit from over pressurization.

The RV-050 allows free flow from ① to ②. As pressure at ① exceeds pressure at ②, the valve unseats from the cavity, allowing flow from ① to ②. This provides anti-cavitation function through the check valve.

FEATURES and BENEFITS

- Rapid response to pressure surges.
- Anti-cavitation function through the check valve.
- Hardened precision poppet and seat for long life.
- Fast opening and closing.
- Low hysteresis.
- Compact size.

PRESSURE DROP VS. FLOW



SPECIFICATIONS

Operating Pressure: 5500 psi (380 bar)

Flow: See PRESSURE DROP VS. FLOW graph.

Nominal Flow 16 gpm (60 lpm)

Internal Leakage: 1.0 cc/min at 80% set

Crack Pressure Defined: Determined at .25 gpm (0.9 lpm)

Reseat Pressure: Nominal 80% of crack pressure

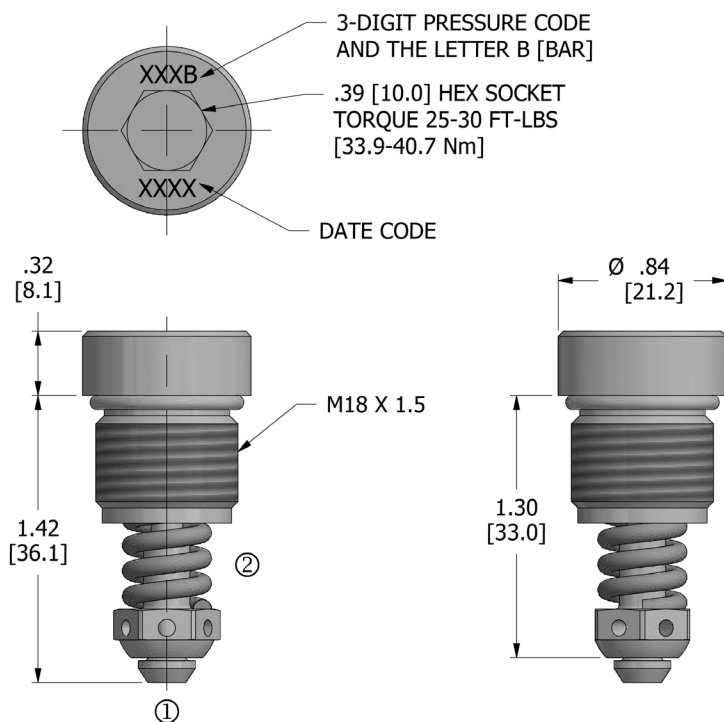
Temperature: -30°F to +220°F (-35°C to +104°C)

Recommended Filtration: ISO 20/18/14

Fluids: Mineral-based fluids.

Cavity/Cavity Tool: R05-2, see page 11.25.2

DIMENSIONS Inches [Millimeters]



HOW TO ORDER

RV - **050** - *******

Relief Valve Cavity Factory Preset Bar

Seals	Seal Kit
Buna N	(1) 10239-04

Factory Preset Bar					
	Available in 5 bar increments	Spring Color		Available in 5 bar increments	Spring Color
070	70 bar (1000 psi)	blue	275	275 bar (3988 psi)	gray
	to			to	
120	120 bar (1740 psi)		290	290 bar (4206 psi)	yellow
125	125 bar (1812 psi)	red	295	295 bar (4278 psi)	
	to			to	
215	215 bar (3118 psi)		325	325 bar (4713 psi)	
220	220 bar (3190 psi)	white			
	to				
270	270 bar (3915 psi)				