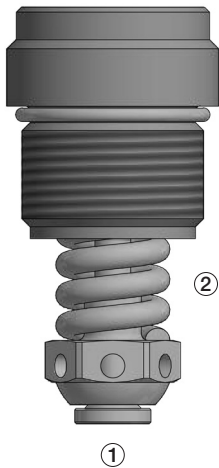
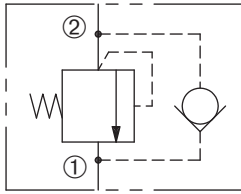


RV-080

Relief Valve,
Anti-Cavitation Check
5500 psi (380 bar)

SERIES 080



DESCRIPTION

A cartridge valve designed to combine a shock relief valve, (direct acting) and anti-cavitation function through the check valve.

OPERATION

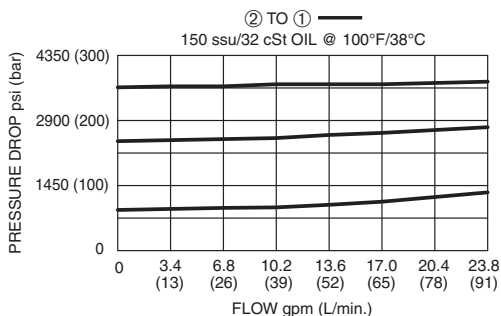
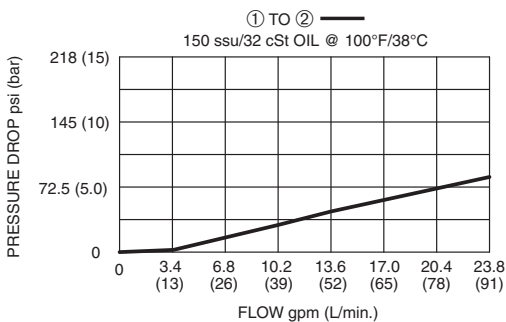
The RV-080 prevents flow from ② to ① until the set crack pressure at ② is achieved. The poppet then unseats allowing flow from ② to ①, protecting the circuit from over pressurization.

The RV-080 allows free flow from ① to ②. As pressure at ① exceeds pressure at ②, the valve unseats from the cavity allowing flow from ① to ②. This provides anti-cavitation function through the check valve.

FEATURES and BENEFITS

- Rapid response to pressure surges.
- Anti-cavitation function through the check valve.
- Hardened precision poppet and seat for long life.
- Fast opening and closing.
- Low hysteresis.
- Compact size.

PRESSURE DROP VS. FLOW



SPECIFICATIONS

Operating Pressure: 5500 psi (380 bar)

Flow: See PRESSURE DROP VS. FLOW graph.
Nominal Flow 24 gpm (91 lpm)

Internal Leakage: 2.0 cc/min at 80% set

Crack Pressure Defined: Determined at .25 gpm (0.9 lpm)

Reseat Pressure: Nominal 80% of crack pressure

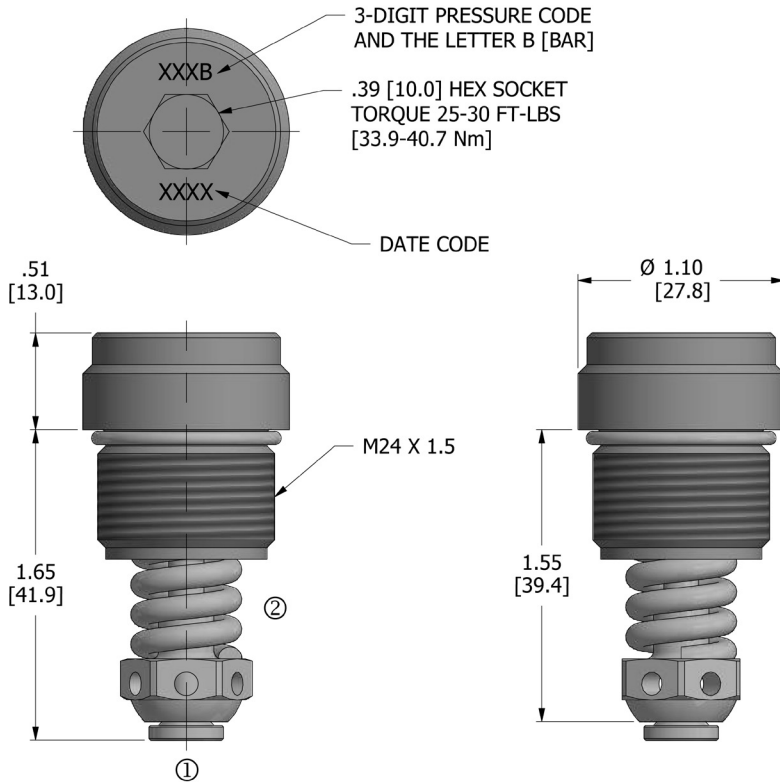
Temperature: -30°F to +220°F (-35°C to +104°C)

Recommended Filtration: ISO 20/18/14

Fluids: Mineral-based fluids.

Cavity/Cavity Tool: R08-2, see page 11.28.2

DIMENSIONS Inches [Millimeters]



HOW TO ORDER



| Seals | Seal Kit |
|--------|--------------|
| Buna N | (1) 10239-91 |

| Factory Preset Bar | | |
|--------------------|-------------------------------|--------------|
| | Available in 5 bar increments | Spring Color |
| 070 | 70 bar (1000 psi) | green |
| | to | |
| 230 | 230 bar (3335 psi) | gray |
| 235 | 235 bar (3408 psi) | |
| | to | |
| 270 | 270 bar (3915 psi) | |

All variations may not be configurable. Minimum order quantities may be required on other models. Contact Deltrol Fluid Products for complete details.