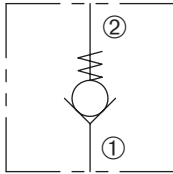


ZCO-42

Direct-Acting, Ball-Type
Check Valve

ZERO PROFILE



DESCRIPTION

A cartridge valve designed to allow free flow in one direction, while preventing flow in the opposite direction. This valve is commonly used as a load-holding or blocking valve.

OPERATION

Pressure at ① overcomes the spring-bias ball and allows free flow to ②. Flow in the opposite direction, from ② to ①, is blocked by the ball.



FEATURES and BENEFITS

- Chrome alloy ball for long life.
- Low leak.
- Compact size.

SPECIFICATIONS

Operating Pressure: 3500 psi (241 bar)

Flow: See PRESSURE DROP VS. FLOW graph.

Nominal flow 1 gpm (3.8 lpm)

Internal Leakage: 2 drops/min max. at 3000 psi (207 bar)

Crack Pressure: 5 psi (0.3 bar)

Temperature: -30°F to +250°F (-35°C to +120°C)

Recommended Filtration: Critical Application – ISO 17/15/13

Non-Critical Application – ISO 20/18/14

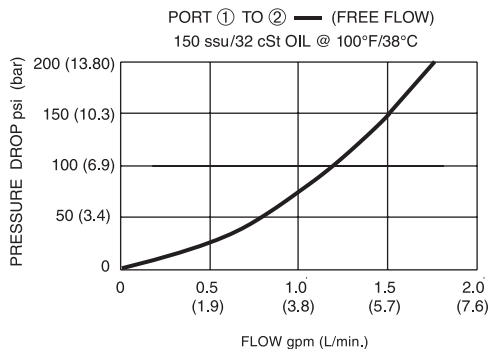
Fluids: Mineral-based fluids.

For other fluid compatibility, consult factory.

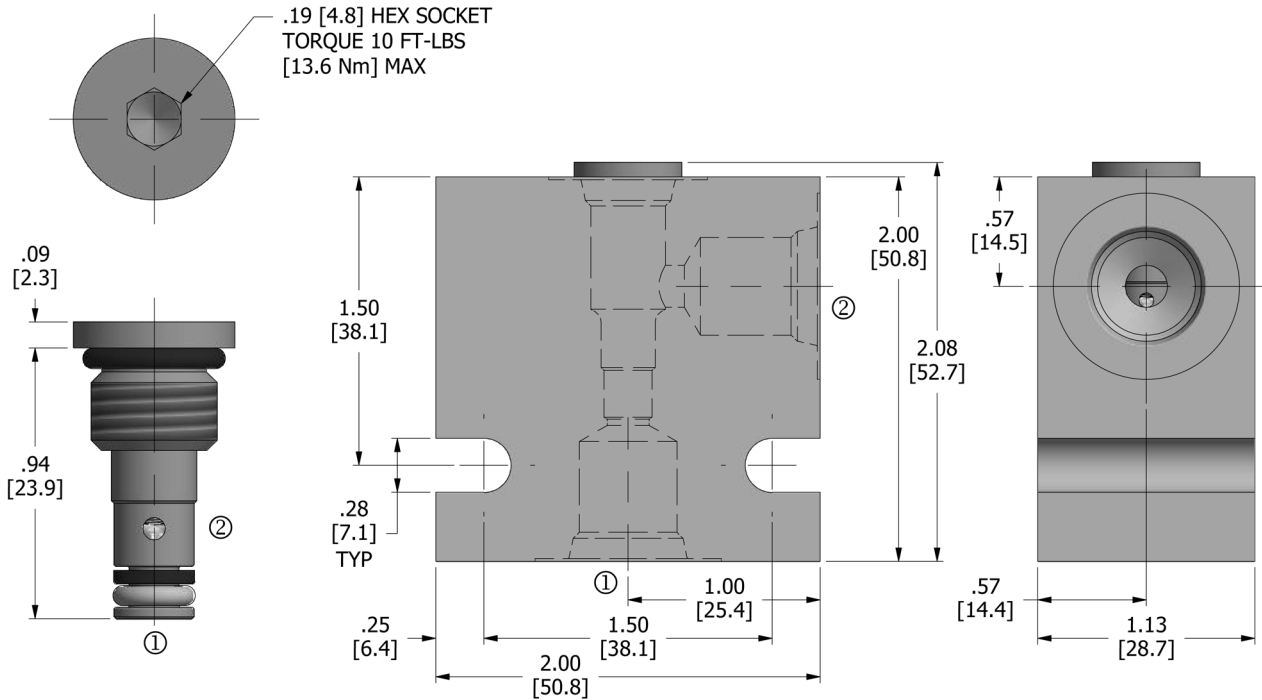
Cavity/Cavity Tool: ZP42, see page 11.04.2

In-Line Body Material: Anodized 6061T6 aluminum alloy rated at 3000 psi (207 bar).

PRESSURE DROP VS. FLOW



DIMENSIONS Inches [Millimeters]



HOW TO ORDER

ZCO - **42** - **U** - ******

Check Valve Cavity Seals Porting

Seals		Seal Kit	Porting [†]		In-Line Body w/o Cartridge
U	Urethane	(1) 10031-19	omit	Cartridge only	
		(1) 10181-09	4T	SAE 4	B-ZP42-A-4T
		(1) 10200-82	6T	SAE 6	B-ZP42-A-6T

[†] Other options available – consult factory

Valve and In-Line Body are supplied individually and need to be assembled. For a completed assembly consult the factory.

All variations may not be configurable. Minimum order quantities may be required on other models. Contact Deltrol Fluid Products for complete details.