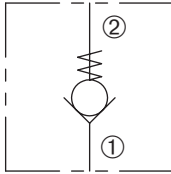


# ZCP6

Direct-Acting, Poppet-Type  
Check Valve

## ZERO PROFILE

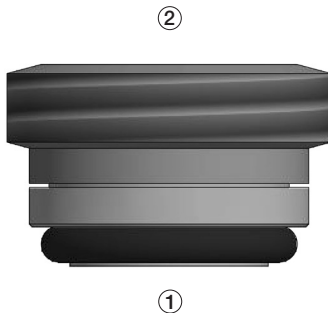


### DESCRIPTION

A cartridge valve designed to allow free flow in one direction, while preventing flow in the opposite direction. This valve is commonly used as a load-holding or blocking valve.

### OPERATION

Pressure at ① overcomes the spring-bias poppet and allows free flow to ②. Flow in the opposite direction, from ② to ①, is blocked by the poppet.



### FEATURES and BENEFITS

- Hardened poppet and seat for long life.
- Low leak.
- Compact size.

### SPECIFICATIONS

**Operating Pressure:** 3500 psi (241 bar)

**Flow:** See PRESSURE DROP VS. FLOW graph.

Nominal Flow 5 gpm (18.9 lpm).

**Internal Leakage:** 2 drops/min max. at 3000 psi (207 bar)

**Crack Pressure:** 5 psi (0.5 bar)  
10 psi (0.7 bar)

**Temperature:** -30°F to +250°F (-35°C to +120°C)

**Recommended Filtration:** Critical Application – ISO 17/15/13

Non-Critical Application – ISO 20/18/14

**Fluids:** Mineral-based fluids.

For other fluid compatibility, consult factory.

**Cavity:** ZCP6, see page 2.03.2

**Installation/Removal Tool:** Consult factory

### PRESSURE DROP VS. FLOW

