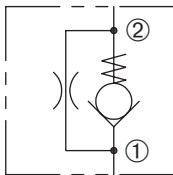


ZFC-62

Flow Control, Check Valve
With Fixed Orifice

ZERO PROFILE



DESCRIPTION

A cartridge valve designed to allow restricted flow in one direction with free flow in the opposite direction.

OPERATION

Pressure at ① overcomes the spring-bias poppet and allows free flow to ②. Flow in the opposite direction, from ② to ①, is metered by an orifice.



FEATURES and BENEFITS

- Slip in style.
- Compact size.

SPECIFICATIONS

Operating Pressure: 3000 psi (207 bar)

Flow: See PRESSURE DROP VS. FLOW graph.

Nominal flow 4 gpm (15.2 lpm)

Bias-Spring: 5 psi (0.3 bar)

Temperature: -30°F to +250°F (-35°C to +120°C)

Recommended Filtration: Critical Application – ISO 17/15/13
Non-Critical Application – ISO 20/18/14

Fluids: Mineral-based fluids.

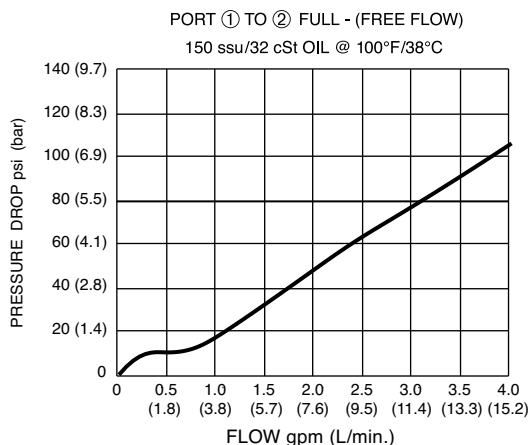
For other fluid compatibility, consult factory.

Installation/Removal Tool: Consult factory.

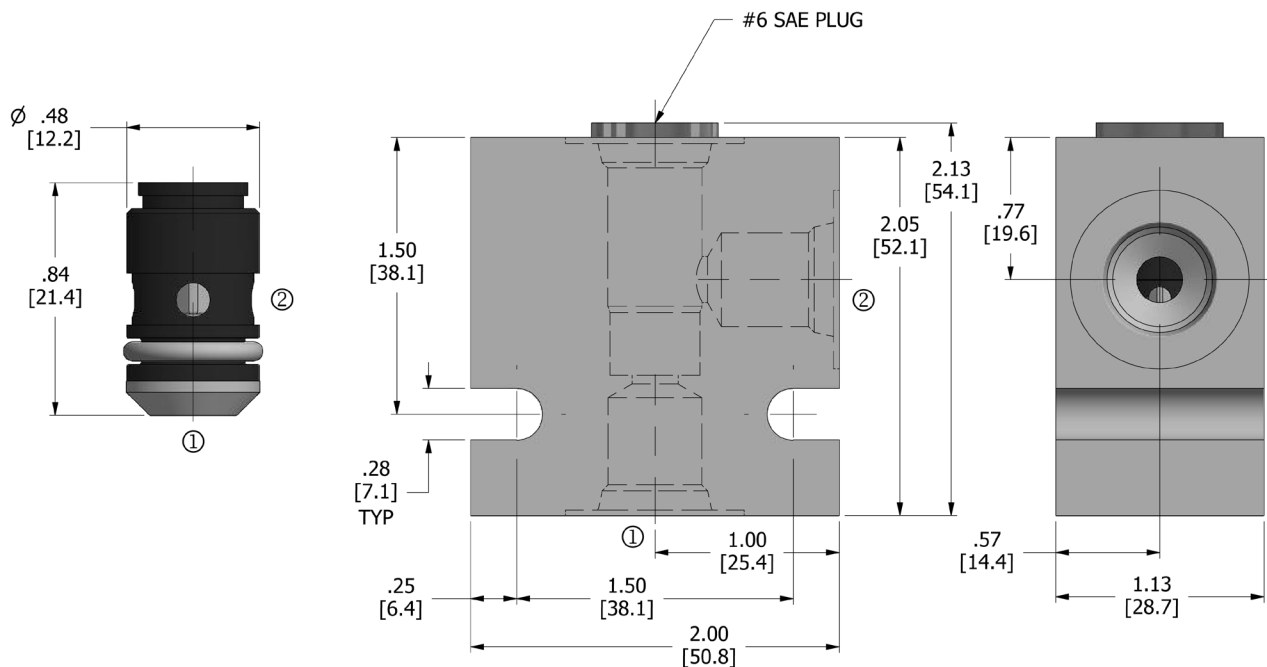
Cavity: ZP62, see page 11.06.2

In-Line Body Material: Anodized 6061T6 aluminum
alloy rated at 3000 psi (207 bar).

PRESSURE DROP VS. FLOW



DIMENSIONS Inches [Millimeters]



HOW TO ORDER

ZFC - **62** - **U** - ******* - ******
 Flow Control Valve Cavity Seals Orifice Diameter Porting

Seals		Seal Kit
U	Urethane	(1) 10195-25

Orifice Diameter†	
015	.015" (.38 mm)
031	.031" (.79 mm)
062	.062" (1.57 mm)
070	.070" (1.78 mm)
109	.109" (2.77 mm) Max. size available

Porting†		In-Line Body w/o Cartridge
omit	Cartridge only	
4T	SAE 4	B-ZP62-A-4T
6T	SAE 6	B-ZP62-A-6T

† Other options available – consult factory

Valve and In-Line Body are supplied individually and need to be assembled. For a completed assembly consult the factory.

All variations may not be configurable. Minimum order quantities may be required on other models. Contact Deltrol Fluid Products for complete details.