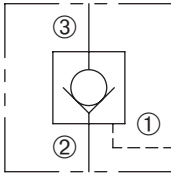


ZPC2-63

Pilot To Open, Ball-Type
Check Valve

ZERO PROFILE

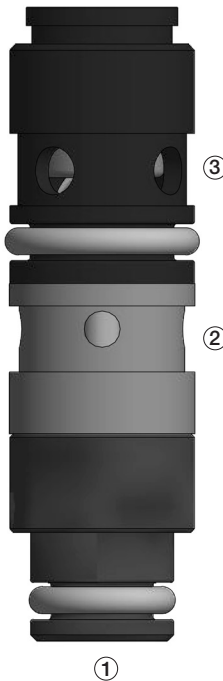


DESCRIPTION

A cartridge valve designed to allow free flow in one direction, while preventing flow in the opposite direction. Reverse flow can be achieved by reaching the required pilot pressure. This valve is commonly used as a load-holding or blocking valve.

OPERATION

Pressure at ② overcomes the spring-bias ball and allows free flow to ③. Flow in the opposite direction, from ③ to ②, is blocked by the ball. When the required pilot pressure is achieved at ①, the ball unseats and allows flow between ③ and ②. The pilot piston area to poppet seat area ratio is 3:1.



FEATURES and BENEFITS

- Slip in style
- Compact size.

SPECIFICATIONS

Operating Pressure: 4000 psi (276 bar)

Flow: See PRESSURE DROP VS. FLOW graph.
Nominal Flow 3 gpm (11.4 lpm)

Internal Leakage: 5 drops/min max. at 3000 psi (207 bar)

Crack Pressure: 30 psi (2.1 bar)

Pilot Ratio: 3:1

Temperature: -30°F to +250°F (-35°C to +120°C)

Recommended Filtration: Critical Application – ISO 17/15/13
Non-Critical Application – ISO 20/18/14

Fluids: Mineral-based fluids.

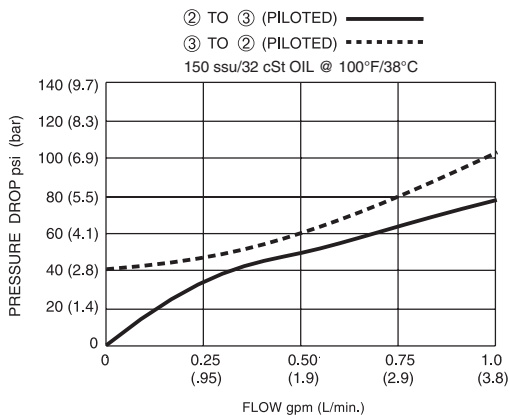
For other fluid compatibility, consult factory.

Cavity/Cavity Tool: ZP63, see page 11.06.3

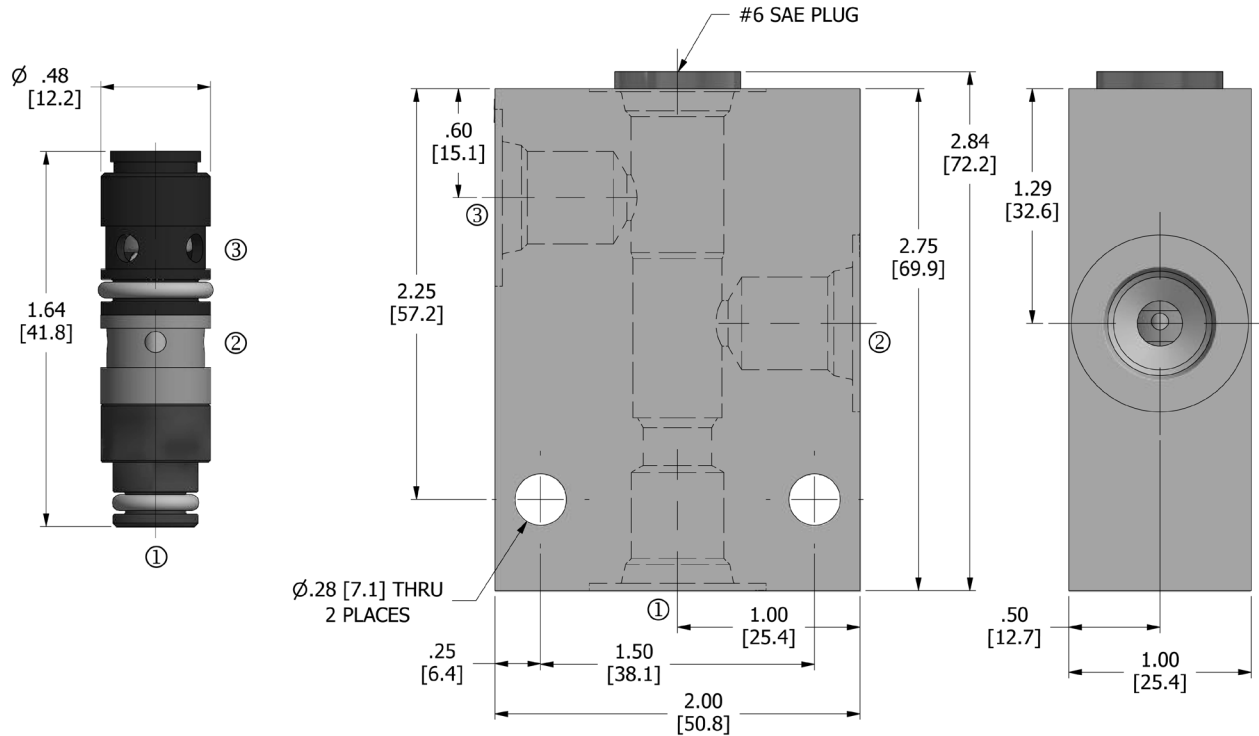
Installation/Removal Tool: Consult factory

In-Line Body Material: Anodized 6061T6 aluminum
alloy rated at 3000 psi (207 bar).

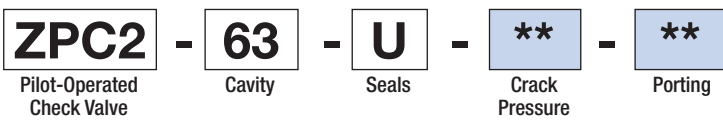
PRESSURE DROP VS. FLOW



DIMENSIONS Inches [Millimeters]



HOW TO ORDER



Seals		Seal Kit
U	Urethane	(1) 10195-24
		(1) 10195-25

Crack Pressure	
30	30 psi (2.1 bar)

Porting [†]		In-Line Body w/o Cartridge
omit	Cartridge only	
4T	SAE 4	B-ZP63-A-4T
6T	SAE 6	B-ZP63-A-6T

[†] Other options available – consult factory

Valve and In-Line Body are supplied individually and need to be assembled. For a completed assembly consult the factory.

All variations may not be configurable. Minimum order quantities may be required on other models. Contact Deltrol Fluid Products for complete details.