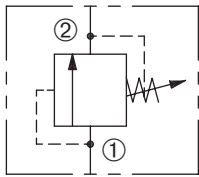


ZRV-63

Adjustable,
Direct-Acting Relief Valve

ZERO PROFILE

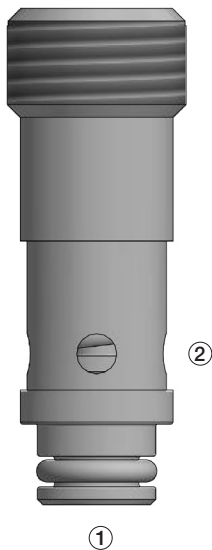


DESCRIPTION

An adjustable, direct-acting poppet cartridge valve designed to limit pressure in hydraulic circuits.

OPERATION

The ZRV-63 prevents flow from ① to ② until the set crack pressure at ① is achieved. The poppet then unseats allowing flow from ① to ② protecting the circuit from over pressurization.



FEATURES and BENEFITS

- Rapid response to pressure surges.
- Hardened poppet and seat for long life.
- Compact size.

SPECIFICATIONS

Operating Pressure: 3200 psi (221 bar)

Flow: See PRESSURE DROP VS. FLOW graph.

Nominal flow 2 gpm (11.4 lpm)

Internal Leakage: 10cc/min at 3000 psi (207 bar) at 80% set.

Crack Pressure Defined: Determined at .25 gpm (0.9 lpm)

Reseat Pressure: Nominal 80% of crack pressure.

Spring Range: 100 to 3200 psi (7 to 221 bar)

Preset (See HOW TO ORDER)

Temperature: -30°F to +220°F (-35°C to +104°C).

Recommended Filtration: ISO 20/18/14

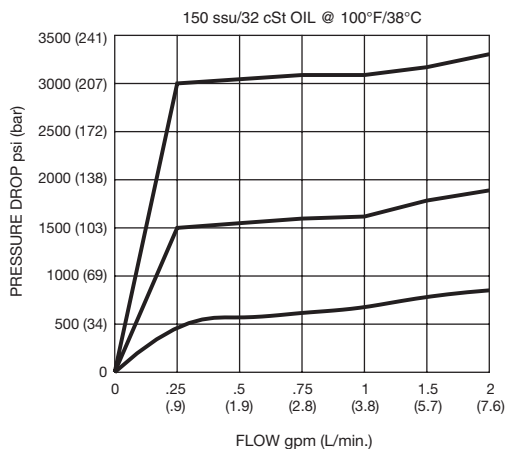
Fluids: Mineral-based fluids. For other fluid compatibility, consult factory.

Cavity/Cavity Tool: ZP63, see page 11.06.3

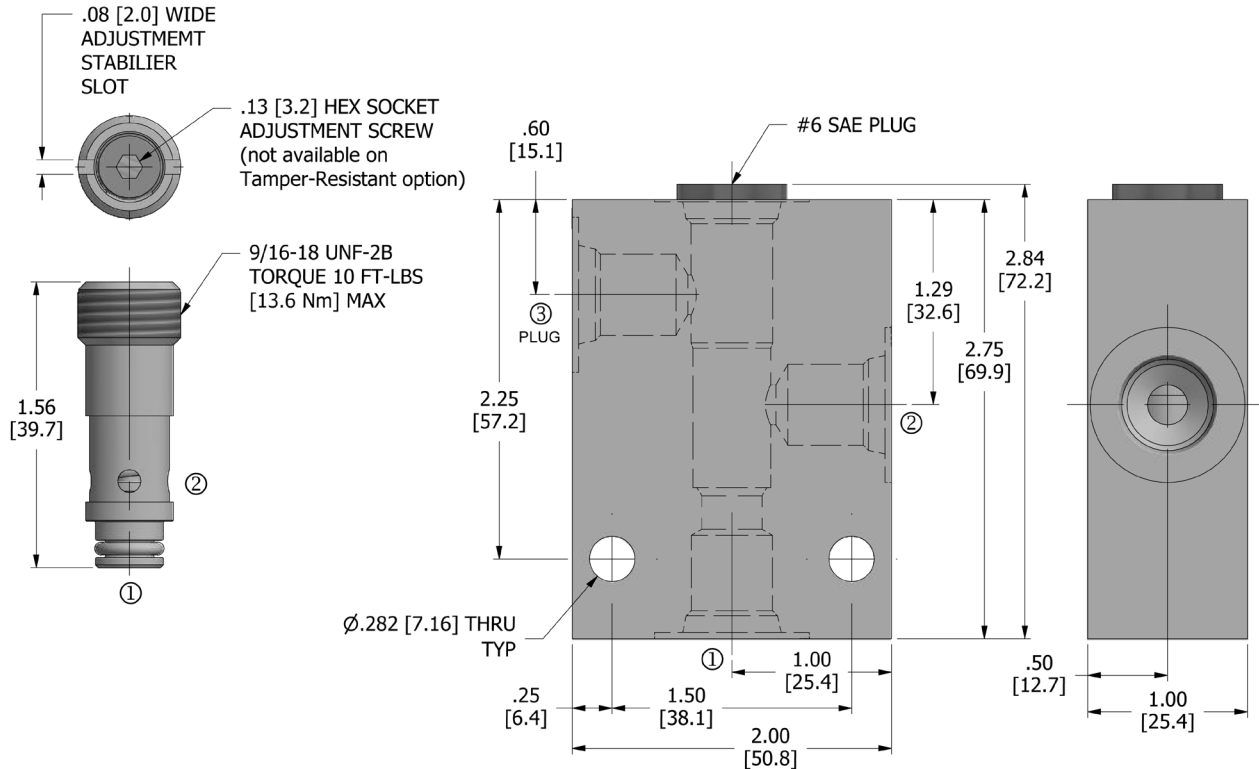
Installation/Removal Tool: Consult factory.

In-Line Body Material: Anodized 6061T6 aluminum alloy rated at 3000 psi (207 bar).

PRESSURE DROP VS. FLOW



DIMENSIONS Inches [Millimeters]



HOW TO ORDER



Seals		Seal Kit
U	Urethane	(1) 10195-24

Adjustment Style	
omit	For standard
H	Tamper resistant

	Pressure Code	
	Factory Preset	Spring Range
10	500 psi (34 bar)	100 to 1000 psi (7 to 69 bar)
01	750 psi (52 bar)	
09	925 psi (64 bar)	
20	1500 psi (103 bar)	900 to 2000 psi (62 to 138 bar)
02	1600 psi (110 bar)	
03	1950 psi (134 bar)	1900 to 3200 psi (131 to 221 bar)
30	2000 psi (138 bar)	
07	2200 psi (152 bar)	
04	2500 psi (172 bar)	
08	2800 psi (193 bar)	
05	3000 psi (207 bar)	
06	3200 psi (221 bar)	

Porting†		In-Line Body w/o Cartridge
omit	Cartridge only	
4T	SAE 4	B-ZP63-A-4T
6T	SAE 6	B-ZP63-A-6T

† Other options available – consult factory

Valve and In-Line Body are supplied individually and need to be assembled. For a completed assembly consult the factory.

All variations may not be configurable. Minimum order quantities may be required on other models. Contact Deltrol Fluid Products for complete details.