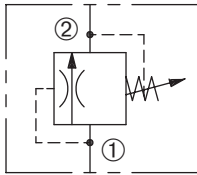


ZTRV-62

Thermal,
Relief Valve
6000 psi (414 bar)

ZERO PROFILE

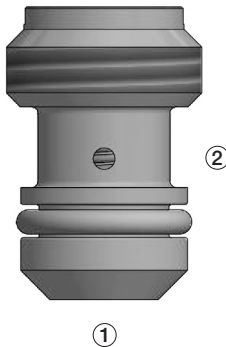


DESCRIPTION

A directing poppet cartridge thermal relief valve designed to limit pressure in hydraulic circuits as a result of temperature induced pressure intensification.

OPERATION

The ZTRV-62 prevents flow from ① to ② until the set crack pressure at ① is achieved. The poppet then unseats, allowing flow from ① to ②, limiting system pressure.



FEATURES and BENEFITS

- Hardened parts for long life.
- Hidden adjustment (tamper resistant).
- Zero profile style cavity.
- Compact size.

SPECIFICATIONS

Operating Pressure: 6000 psi (414 bar)

Internal Leakage: 5 drops/min at reseal pressure.

Re-Set Pressure: Nominal 80% of crack pressure.

Spring Range: 2800 to 6000 psi (193 to 414 bar)
Preset (See HOW TO ORDER)

Temperature: -30°F to +250°F (-35°C to +120°C).

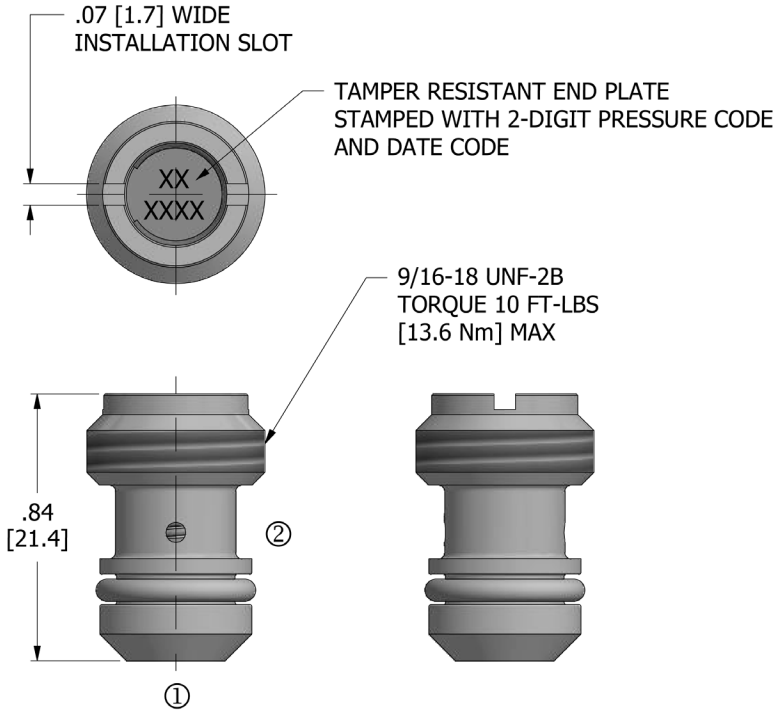
Recommended Filtration: ISO 17/15/13

Fluids: Mineral-based fluids.

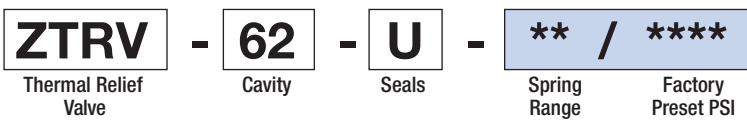
For other fluid compatibility, consult factory

Cavity/Cavity Tool: ZP62, see page 11.06.2

DIMENSIONS Inches [Millimeters]



HOW TO ORDER



Seals		Seal Kit	Spring Range		Preset	Factory Preset PSI	
U	Urethane	(1) 10195-25	30	2800 to 3800 psi (193 to 262 bar)	2900 psi (200 bar)	****	example: 3550 = 3550 psi
			40	4000 to 6000 psi (276 to 414 bar)	4000 psi (276 bar)	2900	2900 psi
			50	4000 to 6000 psi (276 to 414 bar)	4000 psi (276 bar)	3500	3500 psi
						4000	4000 psi
						5000	5000 psi

All variations may not be configurable. Minimum order quantities may be required on other models. Contact Deltrol Fluid Products for complete details.