

SERIES 8

16 WATT

SPECIFICATIONS

Wattage: Nominally 16 watt at 68°F./20°C.

Duty Rating: Continuous up to 115% voltage.

Ambient Operating Temperature: 212°F/100°C.

Encapsulating Material: Thermoplastic Polyester (PET) (Rynite 415 HP).

Termination Options: See below and on the following pages.

Environmental: IP69K for Deutsch, Metri-Pack and Amp Junior timer-style coils.

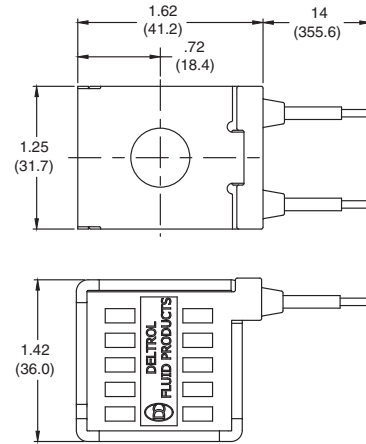
VOLTS	OHMS	INITIAL CURRENT DRAW (AMPS)
10 DC	6.2	1.60
12 DC	9.0	1.33
20 DC	25.0	.80
24 DC	35.8	.67

DOUBLE LEADS

CODE - **DE

VOLTS	PART NO.	LEAD COLOR
10 DC	10257-40	GREEN
12 DC	10244-28	RED
20 DC	10258-75	
24 DC	10257-41	BLUE

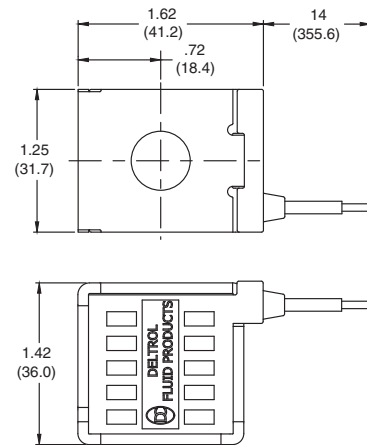
FOR INTERNAL DIODE – CONSULT FACTORY



SINGLE LEAD

CODE - **SE

VOLTS	PART NO.	LEAD COLOR
10 DC	10257-44	GREEN
12 DC	10244-29	RED
20 DC	10258-76	
24 DC	10257-45	BLUE



Series 8 External Frame K-Coil Data (continued)

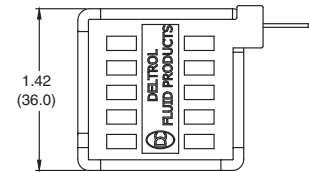
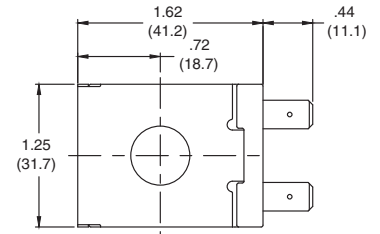
SERIES 8

DOUBLE SPADE

CODE - **BE

VOLTS	PART NO.
10 DC	10257-46
12 DC	10244-27
20 DC	10257-47
24 DC	10257-48

TERMINATION:
1/4" MALE QUICK-CONNECT
PER SAE J858A (TYPE 1B)



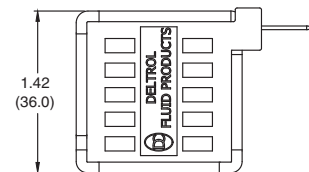
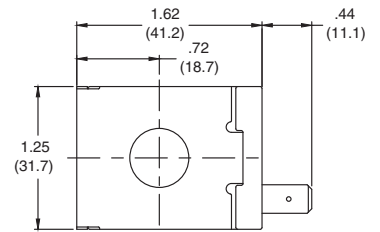
FOR INTERNAL DIODE – CONSULT FACTORY

SINGLE SPADE

CODE - **AE

VOLTS	PART NO.
10 DC	10257-51
12 DC	10252-18
20 DC	10258-77
24 DC	10257-52

TERMINATION:
1/4" MALE QUICK-CONNECT
PER SAE J858A (TYPE 1B)

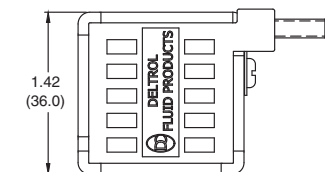
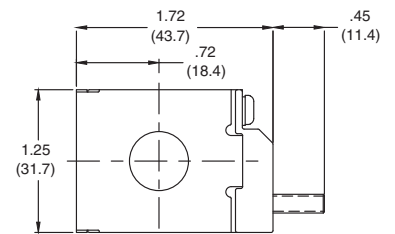


SINGLE STUD

CODE - **EE

VOLTS	PART NO.
10 DC	10257-53
12 DC	10252-19
20 DC	10258-78
24 DC	10257-54

TERMINATION:
8-32 MALE STUD
WITH BRASS NUTS

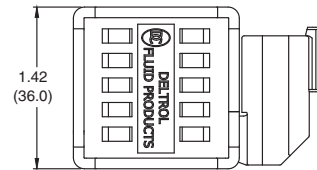
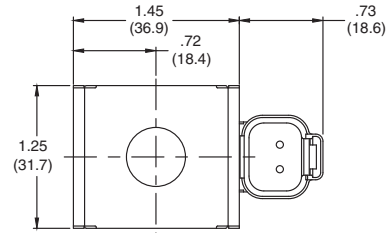


DEUTSCH

CODE - **UE

VOLTS	PART NO.
10 DC	10257-55
12 DC	10244-24
20 DC	10257-56
24 DC	10257-57

TERMINATION:
 INTEGRAL DEUTSCH CONNECTOR
 DT04-2P
 MATING CONNECTOR
 DT06-2S

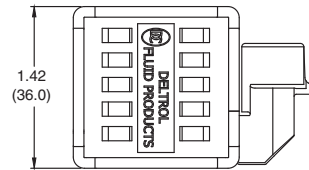
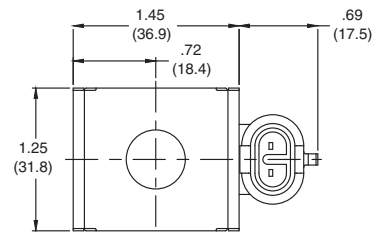


FOR INTERNAL DIODE – CONSULT FACTORY

METRI-PACK

CODE - **PE

VOLTS	PART NO.
10 DC	10257-58
12 DC	10244-25
20 DC	10257-59
24 DC	10257-60

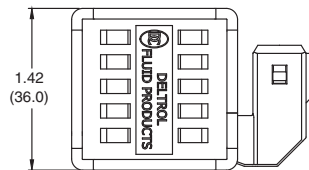
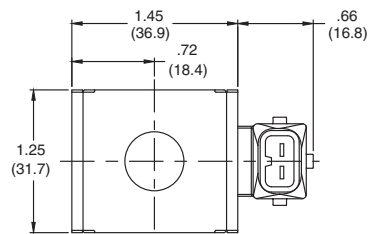


FOR INTERNAL DIODE – CONSULT FACTORY

AMP JUNIOR TIMER

CODE - **JE

VOLTS	PART NO.
10 DC	10257-61
12 DC	10244-26
20 DC	10257-62
24 DC	10257-63



FOR INTERNAL DIODE – CONSULT FACTORY

SOLENOID
 CHECK
 MOTION CONTROL
 FLOW CONTROL
 RELIEF
 PRESSURE CONTROL
 SEQUENCE
 SHUTTLE
 DIRECTIONAL VALVES
 ACCESSORIES
 TECHNICAL DATA