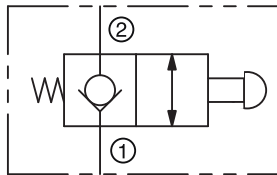


**MOC20S Check, Plunger-Operated**  
Female-to-Female

IN-LINE



**DESCRIPTION**

Plunger-Operated Check Valve. Check valves operate on slight differential pressure. Free flow is permitted in the direction of the arrow, positive check in the opposite direction. Reverse flow can be achieved by manually depressing plunger.

- **Normally-Closed, Push-to-Open**
- **For hydraulic or pneumatic applications**
- **Pneumatic applications are not Bubble-Tight**

**SPECIFICATIONS**

**Maximum Operating Pressure (Non-Shock Service)**

Carbon Steel: 3,000 psi (207 bar)

**Cracking Pressure**

1 to 2.5 psi (.07 to .17 bar)

**Maximum Recommended Flow**

5.0 gpm (18.9 lpm)

Co-Efficient (Cv Factor) = .54

**Operating Temperature Range**

-30° to +200° F (-34° to +93° C)

**Plunger Effort**

70 lbs. (311 N) per 1,000 psi (69 bar)

**Threads**

NPTF 1/4"

**Materials**

Body: Steel

Housing: Brass

Nuts: Steel

Plunger: Stainless Steel 303

Piston: Steel

Springs: Music wire

O-Ring: Buna-N

Back-Up Washer: Teflon

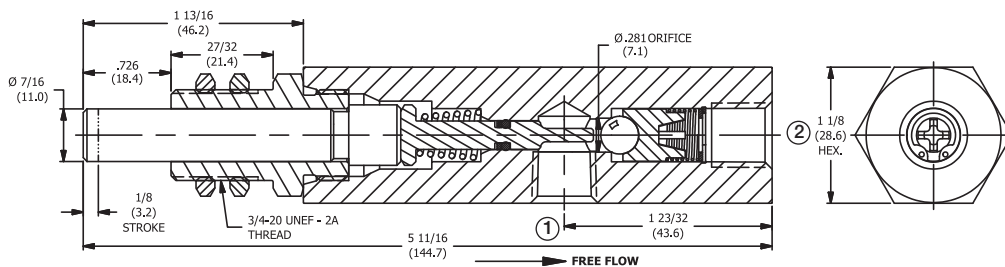
Ball: Stainless Steel 440

Ball Guide: Delrin®

Washer: Dtainless Steel 304

Retainer Ring: Steel

**INSTALLATION DIMENSIONS**



( ) Parentheses = Millimeters

**HOW TO ORDER**

Size	NPTF Thread
	Steel
1/4"	MOC20S